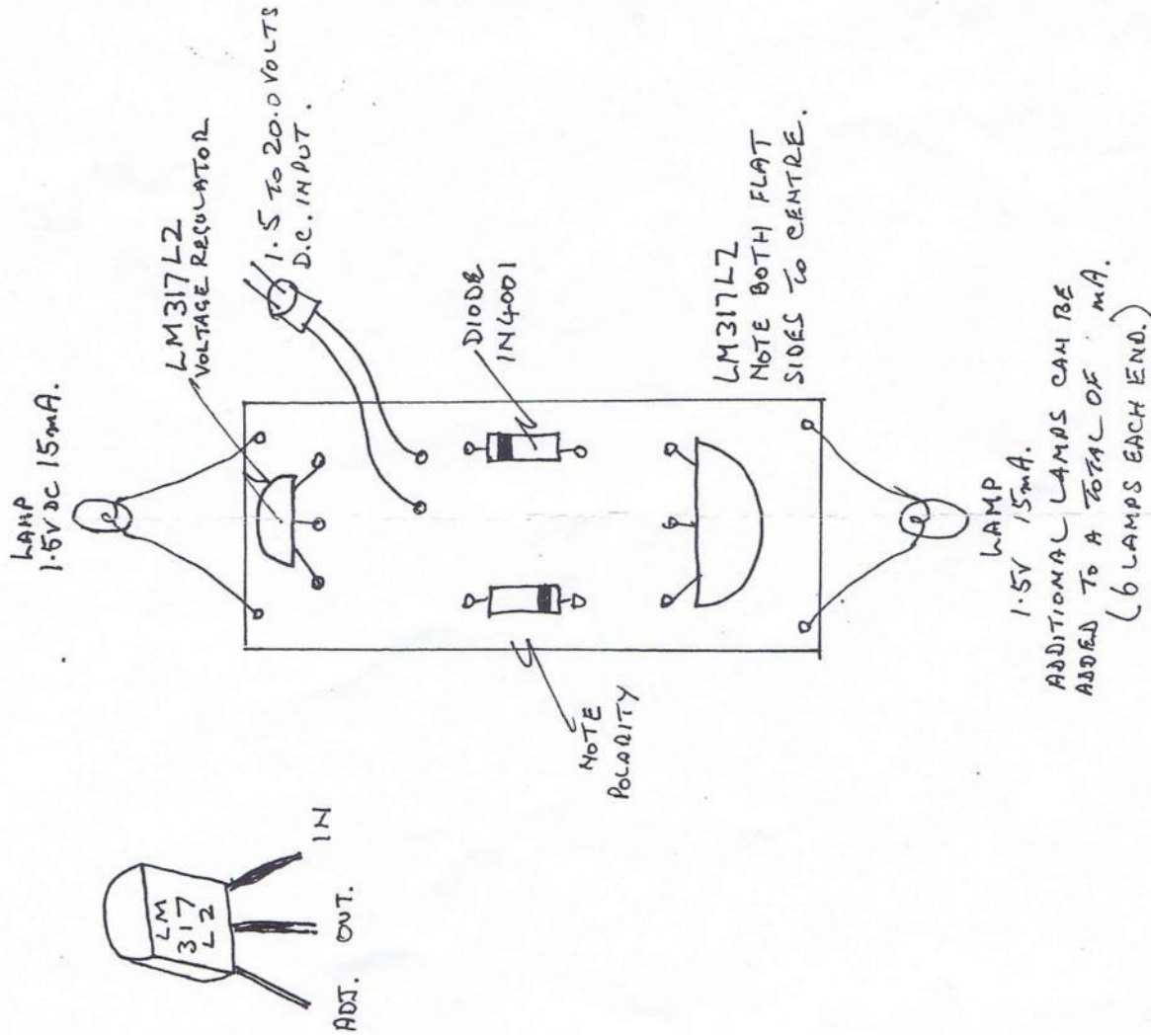


J. B. LIGHTING UNIT PARTS LIST ITEM 29

1.2V OUTPUT - 1.5V TO 20.0V DC. INPUT. CONSTANT & DIRECTIONAL

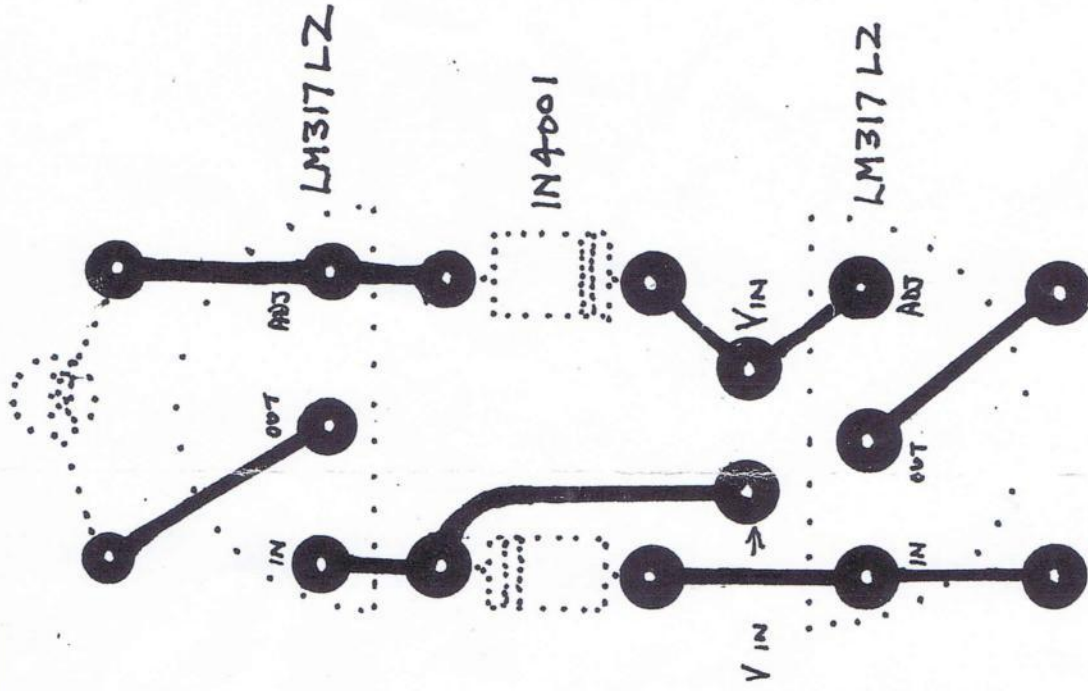
COMPONENT SIDE LAYOUT



J. B. LIGHTING UNIT

1.5V TO 20V DC IN :- 1.2V DC OUT. CONSTANT & DIRECTIONAL

CU SIDE ETCH LAYOUT



13 DEC 1996

Richard G. J.

CONSTANT VOLTAGE 1.2V. DIRECTIONAL
COMPONENT LAYOUT.

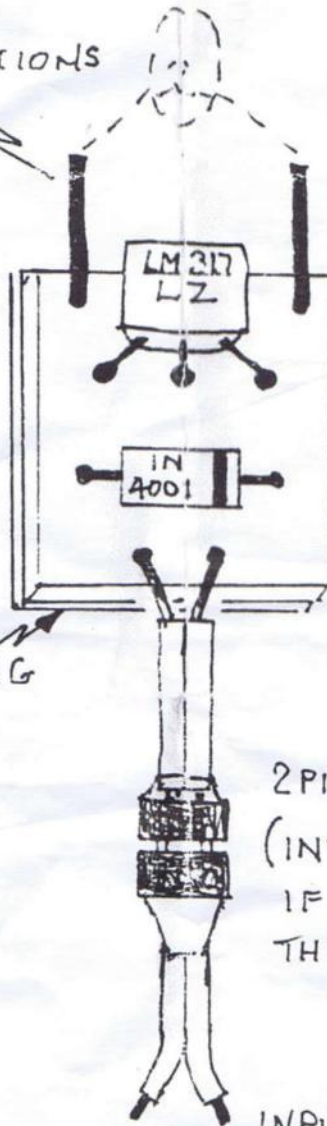
LAMP CONNECTIONS
TO PINS

1.5VDC 15mA LAMP
(TOTAL OF SIX CAN
BE FITTED.)

DO NOT EXCEED
100 mA LOAD.

DOUBLE SIDED
TAPE TO
FIX IN POSITION
SECURE WITH
MASKING TAPE
OVER UNIT.

NOTE: - PLEASE
REMOVE BACKING
PAPER



2PIN PLUG & SOCKET
(INTERPOSE CONNECTION
IF LAMP IS 'ON' IN
THE WRONG DIRECTION).

INPUT CONNECTED TO
MOTOR CONNECTIONS.
1.5V TO 20VDC.

REV A 17 OCT 1997
Jim Burghall
~~15 DEC 1996~~