

# SUMMER TOURS

PRESENTED BY  
PENNSYLVANIA  
RAILROAD

UNDER ESCORT



SEASON

1931

yellowst  
Quarto  
F  
722.9  
. Ala  
w. 240

## DEPARTMENT OF TOURS

CHICAGO & NORTH WESTERN RY.  
UNION PACIFIC SYSTEM



Digitized by the Internet Archive  
in 2014

<https://archive.org/details/summertoursunder240chic>

# SUMMER TOURS

UNDER ESCORT

YELLOWSTONE NATIONAL PARK  
ROCKY MOUNTAIN NATIONAL PARK

ZION NATIONAL PARK

BRYCE CANYON NATIONAL PARK  
GRAND CANYON NATIONAL PARK

MOUNT RAINIER NATIONAL PARK

YOSEMITE NATIONAL PARK

CALIFORNIA , , COLORADO

PACIFIC NORTHWEST , , CANADIAN ROCKIES

ALASKA



SEASON 1931

COPYRIGHT 1931 BY  
J. L. BURGAR, MANAGER  
DEPARTMENT OF TOURS  
CHICAGO & NORTH WESTERN RY.  
UNION PACIFIC SYSTEM  
CHICAGO





Natural Color Photograph

# CONTENTS

Let us be your Host this Summer.....	5 to 7
Yellowstone—Salt Lake City “Y” Circle Tours.....	8 to 11
Yellowstone—Salt Lake City—Royal Gorge—Colorado Springs—Denver “YRG” Circle Tours.....	12 to 15
Yellowstone—Salt Lake City—Ogden—Rocky Mountain National Parks— Denver “YR” Circle Tours.....	16 to 20
Yellowstone—Zion—Bryce Canyon—Grand Canyon National Parks—Cedar Breaks and Salt Lake City “YZ” Circle Tours.....	21 to 24
Zion—Grand Canyon—Bryce Canyon National Parks—Cedar Breaks— Salt Lake City “Z” Circle Tours.....	25 to 27
Zion—Grand Canyon—Bryce Canyon National Parks—Cedar Breaks— Salt Lake City—The Royal Gorge—Colorado Springs—Denver “ZRG” Circle Tours.....	30 to 33
Pacific Northwest—Mt. Rainier and Jasper National Parks—Banff— Lake Louise “PNW” Circle Tours.....	34 to 37
California—Old Mexico—Yosemite National Park “C” Circle Tours.....	38 to 45
Pacific Northwest—Alaska—Canadian Rockies “A” Circle Tours.....	46 to 49
Colorado—“Where the West is Nearest”.....	50 to 51
General Information.....	52 to 56
Reservation Blank.....	Opposite Page 56

## The Color Illustrations in this Booklet

“Photographs tell the Truth.” Photographs in Natural Color show the living colors as they actually are.

Thanks to Color Photography, the Department of Tours is enabled this year to present nature’s masterpieces in the western wonderlands just as the eye sees them.

Each of the twenty-two color illustrations in this booklet are reproduced from “Natural Color Photographs.” Each accurately portrays the beauty of its subject with true fidelity.

“Beauty is truth—truth beauty . . . ”  
—Keats





# Let us be Your Host this Summer . . . . .

Break away this summer! Go some place different. Go where you can find a complete "change of scenery" . . . where you can do just what you want to do—when you want to do it.

Go West!

Make your plans early. And when you plan, let us help you. Let us help you to achieve your dream of a "perfect vacation"—carefree, inexpensive. We know how. It's our business . . . has been our business for the past thirty-one years.

During all that time we've learned a lot. We've learned a lot about planning vacation trips . . . planning them to make the most of every hour.

From the thousands who have traveled with us we have received many compliments . . . accepted many suggestions . . . all of which have given us an accurate knowledge of the vacation traveler's "ideal" itinerary—just what to plan, how to plan it, and how best to carry on after plans are completed.

We have learned to anticipate your every travel desire and need. Our wealth of experience . . . our thorough knowledge of every nook and corner of the West . . . our complete travel service is yours for the asking.

You'll want complete answers to questions like these—What region offers the most in scenic attractions . . . in variety of things to see and to do? How do you get there? How much does it cost? How long will it take? Where do you make reservations . . . for train, hotel, lodge accommodations . . . for motor trips, saddle trips, special side-trips of all sorts? What about luggage . . . what you will need?

These are just a sample of the questions that arise when you begin to plan for your vacation trip. And, it is only a few of





ALONG THE SHORE  
OF GRAND LAKE,  
COLORADO

*Natural Color Photograph*

the innumerable details that it is our pleasure to attend to for you when you travel under our care and guidance.

In the following pages are a number of suggestions for your vacation itinerary—Overland Route Circle Tours. Each has been carefully planned to include as many of the Wonderlands of the West as is possible within certain limits of time and cost . . . each providently designed to give you “most for least.” You travel by train . . . in supreme comfort . . . directly, quickly . . . saving time en route . . . adding days to your time in the regions you have chosen to see and to know.

Everything is arranged for you in advance. You are assured of ample accommodations of the kind you want, in special Pullmans on the West’s finest trains—in all hotels and lodges . . . excellent food and plenty of it everywhere you go.

A courteous and thoroughly competent escort accompanies you







Natural Color Photograph

VERANDA VISTA AT  
GRAND CANYON LODGE

all the way to relieve you of every detail . . . to assist you in every way possible.

You know exactly what it will cost before you leave and you are assured that this cost covers every necessary item of expense.

Not a worry, not a care. Nothing to do but go. All you need do is select from among the Overland Route Circle Tours presented in the following pages the one that suits you best—the one which conforms to your individual likes and requirements. From that point on, your responsibility ceases—ours begins.

Treat yourself to a trip of trips. Make your 1931 vacation one never-to-be-forgotten. Travel with us on an Overland Route Circle Tour.

Let us be *your* host this summer!



# TEN DAY "Y" CIRCLE TOUR

## Yellowstone National Park—Salt Lake City

Imagine being able to see all of Yellowstone—with plenty of time to enjoy its every feature, its every mood—and with the added delight of a day in fascinating Salt Lake City—all in the brief space of ten thrilling days' time from Chicago back to Chicago.

The "Y" Circle Tour offers you just that. And, it's most inexpensive.

People come from all over the world to visit Yellowstone. Yet to us, it is virtually "at our door." To enjoy its unusual charms—its magic spectacles, requires little time and expense and when traveling the tour-way, requires no care or worry.

The trip by train to Yellowstone's gateway is an important part of the journey. "Y" Circle Tours, via the Overland Route, take you there directly, quickly, and in supreme comfort. You arrive at your destination, refreshed and eager for the pleasures that await you.

Via the Overland Route you travel across the heart of the richest agricultural region in the world.

You follow the trails blazed by the early pioneers and traversed, later, by the Mormons, the gold-seekers, the Overland Stage Coach and the Pony Express. Still the shortest, most scenic route to the Pacific Coast, it is paralleled by the Lincoln Highway and is the course flown by the trans-continental air-mail planes.

When you visit Yellowstone, you will want to see it all, of course. Our "Y" Circle Tours, in fact all of our tours which include Yellowstone in their itineraries, enter the Park at West Yellowstone. They make a complete circle, including all of the Park's innumerable show places, and consequently must leave from the same gateway. Of equal importance is the fact that Union Pacific's West Yellowstone entrance is located on the Park's boundary. You spend every minute of your time within the Park boundaries . . . no long motor trip to reach the park after leaving the train thus conserving your precious hours in this region which you have chosen to see, to know and enjoy as thoroughly as possible.

Just "scratch the surface" is all we can possibly do in a few brief pages descriptive of the incomparable delights of a tour through Yellowstone.

Your first thrill comes as you roll along in a comfortable motor bus through the rustic gateway and enter Christmas Tree Park, where the pine-scented air catches you up . . . quickens your senses . . . prepares you for the new delights at each turn in the road. Your engaging companions add immensely to the sheer joy of the occasion.

At the four points where you stop over for the night to enable you to get more intimate glimpses of the various fantasies which Nature has prepared





RANGERS ACQUAINT YOU  
WITH GEYSERLAND

for your pleasure—the geysers, Yellowstone Lake, the canyon and falls, the terraces of Mammoth Hot Springs—rangers conduct you over the formations, explain the phenomena which have produced the magic regions that are Yellowstone's.

Perhaps you may prefer to “sit in the saddle” and canter over the trails. Or, you may wish to try your luck at angling for a mess of trout. Possibly you would rather just seat yourself in some shady retreat and enjoy Nature's loveliness while you rest and relax in quiet comfort. Whatever your choice, you'll find company if you wish—congenial, pleasant company.

Yellowstone's evenings are packed with pleasure as well. Dancing in the hotels . . . excellent entertainment at the lodges . . . open-air camp fires and community sings . . . dancing in the lodges . . . interesting talks by ranger naturalists. Not a dull moment.

And then, in Salt Lake City . . . an interesting trip by motor around the city, with its numerous shrines sacred to the memory of the early Mormon settlers . . . a visit to the famed Temple Grounds . . . a dip in buoyant Salt Lake. Overland Route “Y” Circle Tours have been arranged to make it easy for you to see all of Yellowstone and enjoy Salt Lake City . . . all within a limited amount of time and at exceedingly low cost.

Go this summer.





# Day by Day Story of the Trip

**SATURDAY**—With every detail cared for by a staff of travel experts who attend you at the Chicago & North Western's Chicago Passenger Station, you leave on the Gold Coast Limited, one of the "Overland Route's" famous fleet of splendid trains. All afternoon and night you travel across agricultural Illinois and Iowa, pausing in the early morning at Omaha where your train begins its swift flight over the Union Pacific's ribbons of steel, direct to Yellowstone. You will enjoy the roomy observation car.

**SUNDAY**—Across Nebraska's grain laden fields and into Wyoming—Cheyenne, Laramie, the famous Sherman Hill and Creston where you cross the continental divide. Your dining car meals, an important part of any trans-continental rail trip will be a source of particular joy to you all the way via the "Overland Route"—order whatever you wish and simply sign the guest check. This is a feature of all "Overland Route" Circle Tours.

**MONDAY**—You arrive West Yellowstone, Mont. in the afternoon after traversing a striking stretch of mountain roadway whose ever changing series of panoramas is unsurpassed on any other route. The stately Targhee Forest—Rea's Pass—Warm River Canyon, each a scenic spectacle of the first magnitude, are a fitting prelude to Nature's treasure chest which awaits you in magic Yellowstone. The comfortable motor busses of the Yellowstone Park Transportation Co. which carry you to Old Faithful for your first overnight stop in this weird region, pause en route at Excelsior Geyser, Mammoth Paint Pots, Morning Glory Pool and other interesting formations. In the evening watch the bears—dance to the strains of a melodious orchestra—enjoy the entertainment around the camp fire or just rest and watch Old Faithful with a giant searchlight playing on it—a truly weird scene.



YOU CAN WATCH OLD FAITHFUL PLAY AS YOU BATHE OR SWIM

**TUESDAY**—"Old Faithful" is the favorite of all of the geysers in this thrilling region because of its regularity. You have all the morning to explore this "weirdest spot in the Universe" either conducted by your escort, by a member of the National Park Service, or "go-as-you-please." In the afternoon you motor across the continental divide to lovely Yellowstone Lake where you spend the night—an unusual trip if you are not "held up" en route by a black or a cinnamon bear.

**WEDNESDAY**—In the morning en route to the Canyon, you stop at magic Mud Geyser, arriving at the Canyon in time for luncheon. Words fail you—you catch your breath anew at each new view of the Yellowstone Falls in its stupendous setting, as you make your way from one vantage point to another—afoot—in the saddle or by bus.

**THURSDAY**—For the more venturesome, "Uncle Tom's Trail" to the foot of the lower falls offers a challenge. After luncheon, again by bus, you set out for Mammoth Hot Springs by way of Dunraven Pass, stopping en route at Tower Falls. You spend the night at Mammoth which is the headquarters not only for the park's hotel, lodge and transportation companies but also for the park superintendent.

**FRIDAY**—All morning is yours to spend as you wish, inspecting the terraces of Mammoth Hot Springs, which since the destruction of the pink and white terraces of New Zealand, stand without counterpart in the world. After luncheon you motor past dazzling Obsidian Cliff, see Gibbon Falls and hundreds of other interesting sights—stop at Norris Geyser Basin and arrive at West Yellowstone for dinner in the Union Pacific's excellent dining room. A comfortable over-night journey by train brings you to Salt Lake City.

**SATURDAY**—Arriving in Salt Lake City, you breakfast at the beautiful Hotel Utah, your headquarters for the day. An automobile tour of the city gives you an intensely interesting picture of historic as well as modern Mormon culture and terminates at the Mormon Temple Grounds for a delightful noon-day organ recital in the tabernacle. After luncheon at the Hotel Utah which is directly across the way from the Temple Grounds, you motor to Saltair Beach, situated on Great Salt Lake. Ample time is allowed to enjoy a dip in the buoyant waters of the most unique salt sea on the globe—returning to your train for the journey "back home."

**SUNDAY**—En route across Wyoming and Nebraska via the "Overland Route" surrounded by every travel luxury of the famous Los Angeles Limited. Again the delicious dining car meals add infinitely to your contentment.

**MONDAY**—After breakfast, in the diner, you arrive in Chicago refreshed and reluctant to leave the pleasant companions who have helped materially to make your trip most enjoyable.



Natural Color Photograph

CANYON AND FALLS OF THE YELLOWSTONE

## "Y" Circle Tours Leave Chicago as Follows:

TOUR	TOUR	TOUR	TOUR
Y—1.....Sat., June 20	Y—4.....Sat., July 11	Y—7.....Sat., Aug. 1	Y—10.....Sat., Aug. 22
Y—2.....Sat., June 27	Y—5.....Sat., July 18	Y—8.....Sat., Aug. 8	Y—11.....Sat., Aug. 29
Y—3.....Sat., July 4	Y—6.....Sat., July 25	Y—9.....Sat., Aug. 15	Y—12.....Sat., Sept. 5

## Detailed Schedule

Lv. Chicago, Ill..... 2:30 p.m. Sat.	C. & N. W. Ry.	Lv. Grand Canyon..... 1:35 p.m. Thu.	Automobile
Ar. Omaha, Nebr..... 3:05 a.m. Sun.	"	Via Dunraven Pass stopping at Tower Falls.	"
Lv. Omaha, Nebr..... 3:25 a.m. Sun.	Un. Pac. Sys.	Ar. Mammoth Hot Springs..... 4:47 p.m. Thu.	"
Lv. Cheyenne, Wyo..... 3:40 p.m. Sun.	"	Lv. Mammoth Hot Springs..... 1:30 p.m. Fri.	"
Lv. Green River, Wyo..... 1:05 a.m. Mon.	"	Stopping at Norris Geyser Basin.	"
Lv. Pocatello, Idaho..... 7:45 a.m. Mon.	"	Ar. West Yellowstone, Mont..... 4:40 p.m. Fri.	"
Ar. West Yellowstone, Mont..... 2:25 p.m. Mon.	"	Lv. West Yellowstone, Mont..... 7:00 p.m. Fri.	Un. Pac. Sys.
<b>Five-Day Automobile Tour of Yellowstone National Park</b>			
Lv. West Yellowstone, Mont..... 2:30 p.m. Mon.	Automobile	Ar. Ogden, Utah..... 6:05 a.m. Sat.	"
Stopping at Fountain Paint Pots and Great Fountain Geyser.		Lv. Ogden, Utah..... 6:20 a.m. Sat.	"
Ar. Old Faithful..... 4:57 p.m. Mon.	Automobile	Ar. Salt Lake City, Utah..... 7:15 a.m. Sat.	"
Lv. Old Faithful..... 1:50 p.m. Tue.	"	Headquarters at Hotel Utah—City sightseeing trip in the morning—	
Stopping at Thumb Paint Pots and Fishing Cone.		Noon Organ Recital at Mormon Tabernacle. Trip to Saltair Beach	
Ar. Lake..... 4:58 p.m. Tue.	"	by automobile in afternoon.	
Lv. Lake..... 10:00 a.m. Wed.	"	Lv. Salt Lake City, Utah..... 5:35 p.m. Sat.	Un. Pac. Sys.
Stopping at Mud Geyser and Inspiration Point.		Lv. Cheyenne, Wyo..... 8:20 a.m. Sun.	"
Ar. Grand Canyon..... 11:46 a.m. Wed.	"	Ar. Omaha, Nebr..... 8:15 p.m. Sun.	"
		Lv. Omaha, Nebr..... 8:50 p.m. Sun.	C. & N. W. Ry.
		Ar. Chicago, Ill..... 9:20 a.m. Mon.	"

## Cost of Complete Tour \$450

### FROM CHICAGO, RETURNING TO CHICAGO

	With Rail Ticket	Without Rail Ticket
Two passengers occupying lower berth, each.....	\$144.48	\$ 85.13
One passenger occupying lower berth.....	160.36	101.01
One passenger occupying upper berth.....	154.00	94.65
Two passengers occupying compartment, each.....	173.35	114.00
Two passengers occupying drawing room, each.....	184.60	125.25
Three passengers occupying drawing room, each.....	165.94	106.59

Additional compartment and drawing room rates on application, also rates for incomplete tours.

The above rates, shown with and without railroad fare of \$59.35 from Chicago, are based on "Lodge Way" in Yellowstone, rates via hotels in Yellowstone \$8.50 higher.



# TWELVE-DAY "YRG" CIRCLE TOUR

Yellowstone—Salt Lake City—The Royal Gorge  
Colorado Springs and Denver

Only two full days more are required to add to the pleasure of a vacation in Yellowstone and Salt Lake City, a trip through the world-famous Royal Gorge and a visit to Colorado Springs and Denver. It's most worth while and the additional cost is surprisingly little.

Magnetic Yellowstone offers the opportunity to get away from everything usual, everything common and perhaps a bit boresome. You can forget yourself . . . forget your worries and cares . . . leave the rush, the hustle and bustle, the noise of the city and its industries behind you . . . get "back to nature" for calm, quiet and collected meditation.



THE ROYAL GORGE DEPIES DESCRIPTION

Yellowstone's geysers, its mountains, its raging rivers and lovely lakes, its canyon and falls and its hot springs will captivate you . . . thrill you . . . quicken your pulse. Its cool, clean, invigorating air will give you "a new lease on life."

There are six geyser basins to command your attention . . . each containing a number of geysers, pools and springs.

Old Faithful is the best known of all geysers. It combines all the attributes that we expect of a well-behaved geyser—if you could speak of any geyser in that way.

You can count on it to stage its performance within a few minutes of a specified time; approximately once every hour. Its impressive volume and the great height of its column are other factors contributing to its well-earned fame. You will see weird spots in the geyser basins—as interesting as the geysers themselves. There are such oddities as the Fountain Paint Pot, like a boiling pot of paint, which in reality is colored clay . . . Morning Glory Pool, so named because of its flower-like, delicately tinted cone . . . Emerald Pool, a pit of boiling water of beautiful green color . . . Sapphire Springs, as blue as the gem for which it is named.

Yellowstone Lake, in point of size, may be ranked with the largest of mountain lakes. Its shore line is 100 miles long and it is entirely surrounded by magnificent mountains. If you enjoy a lake trout breakfast—rent a boat, bait your hook, and with only a reasonable amount of patience your morning meal will be assured.

The canyon, the upper falls, the lower or great falls—you'll never forget them. Be prepared for a shock, because no picture—no description—can portray their stupendous magnitude—their staggering beauty.

The setting at Mammoth Hot Springs is fantastic in the extreme. Along the hillsides are groups





Natural Color Photograph

GATEWAY TO  
COLORADO'S  
GARDEN OF THE GODS

of steps or terraces. Over them flow the steaming waters of hot springs, laden with minerals. So vivid are the colors with which the terraces are tinted, that they appear to vibrate and glow in the sunlight. Nature is certainly a masterful artisan.

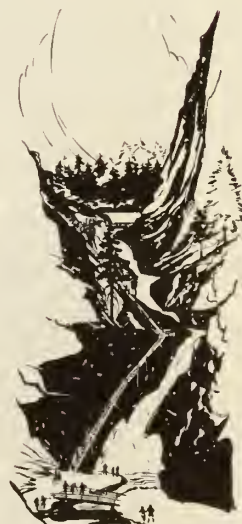
Nature is a chemist, as well. One of her unusual solutions will surprise you when taking a dip in Salt Lake, which of course you will, during your day in Salt Lake City.

In contrast to the soft, powdery expanse of Yellowstone's colorful canyon, the sheer, solid walls of the Royal Gorge will have an added charm as your train winds its way through this glistening gulch en route to Colorado Springs.

Colorado Springs with its Pikes Peak, its Garden of the Gods, Seven Falls, and miles of splendid mountain highways, is a year-round host to thousands of enthusiastic lovers of outdoors in an invigorating climate and scenic setting.

Denver, with its great system of mountain parks is equally famous as a magnet for travelers from the entire nation.

Join one of our "YRG" Circle Tour parties this summer. Close your desk, pack your bag, climb aboard a fine, fast train—we do the rest.



# What You Do Each Day

**SUNDAY**—Present yourself at the "Gateway to all the West"—Chicago & North Western's splendid Chicago Passenger Station. Members of our staff will be waiting to assist you to get away to a perfect start. Settle down in comfort on the Gold Coast Limited and prepare for a glorious afternoon and evening ride across picturesque Illinois and Iowa.

**MONDAY**—The morning finds you speeding across Nebraska on Union Pacific's "finest roadbed in the country" . . . "meals that appeal" await you in the diner. Through regions famed in frontier history . . . across the Continental Divide at Creston, Wyoming.

**TUESDAY**—Through the heart of the Targhee Forest . . . over Rea's Pass . . . through Warm River Canyon . . . the magnificent Tetons to the east . . . arriving West Yellowstone after luncheon in the dining car and step from train to bus.

You enter Yellowstone's exquisite arena at once as you motor to Old Faithful for your first night in the Park. Geyser basins . . . steaming pools . . . rushing rivers . . . restful mountain vistas surround you. Plenty to do in the evening, with a special entertainment presented in the Recreation Hall at the Lodge . . . dancing at both Hotel and Lodge . . . Old Faithful Geyser performing under the glare of immense flood lights.

**WEDNESDAY**—"Ride your hobby"—hike out over the formation in a party conducted by one of the Rangers . . . join one of the saddle trip parties . . . motor out to the more secluded spots for a closer view of Nature's "convulsions" . . . swim in an outdoor pool fed by warm geyser waters. Do as you please in the morning.

In the early afternoon you motor to Yellowstone Lake, crossing the Continental Divide at two points. Overnight at the Lake, and, as at Old Faithful, there's something doing for your entertainment every minute.

**THURSDAY**—Leave at 10:00 A.M. for the Grand Canyon where you arrive for luncheon. All afternoon and next morning to view the mighty falls in their gorgeous settings, from every vantage point. Saddle trips, motor trips, hiking parties—all sorts of ways to get around and plenty of time to see it all. And there's something about the atmosphere of Canyon evenings that is particularly enchanting . . . makes the evening program seem more intriguing . . . the

immense camp fire more scintillating . . . the music, the dance, more downright thrilling.

**FRIDAY**—After luncheon, en route to Mammoth Hot Springs, you have the opportunity of detouring by motor over Mt. Washburn for a commanding view of the entire Park. Your route also takes you to Tower Falls and along the rim of a far different, smaller, though just as lovely canyon of the Yellowstone River, as its Grand Canyon.

**SATURDAY**—All morning to explore the delicately tinted hot spring formations. Luncheon over, you motor to West Yellowstone, stopping at Norris Geyser Basin en route. Leave at 7:00 P.M. for an overnight trip by train to Salt Lake City.

**SUNDAY**—Arrive Salt Lake City at 7:15 A.M. . . . breakfast at the metropolitan Hotel Utah. This capital city of Utah is famous for its schools and churches. Those who wish to attend services in its various churches may do so without interfering with the day's program. "Seeing Salt Lake City" by motor . . . a visit to the Mormon Temple Grounds . . . a swim at Saltair Beach . . . then "All aboard" for a trip over the Denver & Rio Grande Western, through the Royal Gorge, to Colorado Springs. Dinner in the dining car.

**MONDAY**—The Royal Gorge! The towering height of its walls, its dazzling beauty, the surging stream along whose banks your train travels, present a spectacle, the beauty of which one never forgets. Arriving in Colorado Springs, you make your headquarters at the Antlers Hotel—room with bath . . . motor over the Circle Drive to the Garden of the Gods, Seven Falls and through the South Cheyenne Canyon in the afternoon.

**TUESDAY**—A thrilling trip to Pikes Peak by motor in the morning . . . a treat indeed. At noon you leave for Denver, arriving there at 2:15 P. M. for an interesting drive through that city's great mountain parks, including the Lariat Loop Highway to Lookout Mountain. At 11:30 P. M. you leave, aboard the Overland Route's "Mountain Bluebird" for a restful trip "back home."

**WEDNESDAY**—You'll enjoy the quiet comfort of your day en route across Nebraska and into Iowa, with a mid-afternoon pause at Omaha to stretch a bit. Tastily prepared meals in the diner add to your pleasure.

**THURSDAY**—Arrive Chicago, "North Western" Passenger Station at 7:00 A. M.

## Estes-Rocky Mountain National Park Extension

(Arrangements must be made at time of booking)

At best, vacation days in the mountains are all too short. In Denver, you are only a short scenic distance from one of the oldest and most popular mountain playgrounds in the country—Estes-Rocky Mountain National Park.

If time permits—by all means extend your trip to include a visit to this glorious region. Motor through sheer, spectacular Big Thompson Canyon en route to the Park . . . the

sensational South St. Vrain Canyon returning to Denver . . . not to mention impressive Long's Peak and its numerous snow capped neighbors.

Plan to take advantage of this opportunity to visit Estes-Rocky Mountain National Park at very little added expense. An escort will care for every detail during your entire stay.



AN "INTERCOLLEGIATE" CHORUS REHEARSING FOR ONE OF YELLOWSTONE'S LODGE PROGRAMS





YELLOWSTONE'S FAMOUS GOLDEN GATE



COLORADO'S BIG THOMPSON CANYON

## "YRG" Circle Tours Leave Chicago as Follows:

<b>TOUR</b>	<b>TOUR</b>	<b>TOUR</b>	<b>TOUR</b>
YRG-1 ..... Sun., June 21	YRG-4 ..... Sun., July 12	YRG-7 ..... Sun., Aug. 2	YRG-10 ..... Sun., Aug. 23
YRG-2 ..... Sun., June 28	YRG-5 ..... Sun., July 19	YRG-8 ..... Sun., Aug. 9	YRG-11 ..... Sun., Aug. 30
YRG-3 ..... Sun., July 5	YRG-6 ..... Sun., July 26	YRG-9 ..... Sun., Aug. 16	YRG-12 ..... Sun., Sept. 6

## Detailed Schedule

Lv. Chicago, Ill. .... 2:30 p.m. Sun.	C. & N. W. Ry.	Lv. Salt Lake City, Utah. .... 5:00 p.m. Sun.	D. & R.G.W.R.R.
Ar. Omaha, Nebr. .... 3:05 a.m. Mon.	"	Passing through Royal Gorge by daylight.	
Lv. Omaha, Nebr. .... 3:25 a.m. Mon.	Un. Pac. Sys.	Ar. Colorado Springs, Colo. .... 2:40 p.m. Mon.	"
Lv. Cheyenne, Wyo. .... 3:40 p.m. Mon.	"	Headquarters—Antlers Hotel (Room with bath)	
Lv. Green River, Wyo. .... 1:05 a.m. Tue.	"	Monday afternoon—Circle Drive.	
Lv. Pocatello, Idaho .... 7:45 a.m. Tue.	"	Tuesday morning—Pikes Peak Trip by automobile.	
Ar. West Yellowstone, Mont. .... 2:25 p.m. Tue.	"	Lv. Colorado Springs, Colo. .... 12:01 p.m. Tue.	"
		Ar. Denver, Colo. .... 2:15 p.m. Tue.	"

### Five-Day Automobile Tour of Yellowstone National Park

Lv. West Yellowstone, Mont. .... 2:30 p.m. Tue.	Automobile	Headquarters—Cosmopolitan Hotel.	
Stopping at Fountain Paint Pots and Great Fountain Geyser.		Automobile trip through Denver's Mountain Parks, including	
Ar. Old Faithful ..... 4:57 p.m. Tue.	Automobile	Lookout Mountain Drive.	
Lv. Old Faithful ..... 1:50 p.m. Wed.	"	Lv. Denver, Colo. .... 11:30 p.m. Tue.	Un. Pac. Sys.
Stopping at Thumb Paint Pots and Fishing Cone.		Ar. Omaha, Nebr. .... 3:25 p.m. Wed.	"
Ar. Lake ..... 4:58 p.m. Wed.	"	Lv. Omaha, Nebr. .... 3:45 p.m. Wed.	C. & N. W. Ry.
Lv. Lake ..... 10:00 a.m. Thu.	"	Ar. Chicago, Ill. .... 7:00 a.m. Thu.	"
Stopping at Mud Geyser and Inspiration Point.			
Ar. Grand Canyon ..... 11:46 a.m. Thu.	"		
Lv. Grand Canyon ..... 1:35 p.m. Fri.	"		
Via Dunraven Pass stopping at Tower Falls.			
Ar. Mammoth Hot Springs. .... 4:47 p.m. Fri.	"		
Lv. Mammoth Hot Springs. .... 1:30 p.m. Sat.	"		
Stopping at Norris Geyser Basin.			
Ar. West Yellowstone, Mont. .... 4:40 p.m. Sat.	"		
Lv. West Yellowstone, Mont. .... 7:00 p.m. Sat.	Un. Pac. Sys.		
Ar. Ogden, Utah. .... 6:05 a.m. Sun.	"		
Lv. Ogden, Utah. .... 6:20 a.m. Sun.	"		
Ar. Salt Lake City, Utah. .... 7:15 a.m. Sun.	"		

Headquarters—Hotel Utah—City sightseeing tour in the morning—  
Noon Organ Recital at Mormon Tabernacle. Trip to Saltair Beach  
by automobile in the afternoon.

## ESTES PARK EXTENSION

### Arrangements Must be Made at Time of Booking

Lv. Denver Colo. .... 2:30 p.m. Tue.	Automobile	
Via Big Thompson Canyon.		
Ar. Estes Park Chalets. .... 6:30 p.m. Tue.	"	
Headquarters—Estes Park Chalets.		
Lv. Estes Park Chalets. .... 1:15 p.m. Wed.	"	
Via South St. Vrain's Canyon.		
Ar. Denver, Colo. .... 6:00 p.m. Wed.	"	
Headquarters—Cosmopolitan Hotel.		
Lv. Denver, Colo. .... 11:30 p.m. Wed.	Un. Pac. Sys.	
Ar. Omaha, Nebr. .... 3:25 p.m. Thu.	"	
Lv. Omaha, Nebr. .... 3:45 p.m. Thu.	C. & N. W. R.	
Ar. Chicago, Ill. .... 7:00 a.m. Fri.	"	

## Cost of Complete Tour

### FROM CHICAGO, RETURNING TO CHICAGO

	With Rail Ticket	Without Rail Ticket	Estes Park Extension Additional
Two persons occupying a lower berth, each.....	\$167.36	\$108.01	\$ 13.31
One person occupying a lower berth.....	184.61	125.26	16.13
One person occupying an upper berth.....	177.70	118.35	15.00
Two persons occupying a compartment, each.....	198.85	139.50	18.38
Two persons occupying a drawing room, each.....	210.60	151.25	21.00
Three persons occupying a drawing room, each.....	190.44	131.09	17.50

Additional compartment and drawing room rates, also rates for incomplete tours on application.

The above rates, shown with and without rail fare from Chicago, are based on the "Lodge Way" through Yellowstone; if Hotels are used in Yellowstone the rate is \$8.50 higher. Single rooms available at Antlers Hotel—additional cost, \$2.00.





LONG'S PEAK  
DOMINATES ROCKY MT.  
NATIONAL PARK

*Natural Color Photograph*

## TWELVE-DAY "YR" CIRCLE TOUR

Yellowstone and Rocky Mountain National Parks  
Salt Lake City—Ogden—Denver

Two of the nation's largest and most popular National Parks . . . two capital cities, conspicuous for their romantic history and unique charm. Visit them all this summer on our twelve day "YR" Circle Tour.

For number, size and power . . . for variety in action and formation . . . no geysers, anywhere, can compare with those of Yellowstone. Six geyser basins present as many interestingly different groups of geysers, pools and springs. The Yellowstone River, winding its way through the Grand Canyon, leaps over a precipice 308 feet in height, plunging down with a mighty roar. From Inspiration Point, Artists Point, Red Rock and from Uncle Tom's Trail to the river's edge, the spectacle takes on entirely different aspects. Highways, trails, make it easy to see it all—enjoy it from all angles.

Dunraven Pass, the Needles, Tower Falls, the Palisades and then—Mammoth Hot Springs, Obsidian Cliff, Twin Lakes, Gibbon Falls, Norris Geyser Basin. Not only are you constantly seeing new, strange sights, as you hike or go on horseback over the formations and trails of Yellowstone—



all along the highways between your stop-overs, each mile unfolds new panoramas of loveliness . . . new regions of delight.

Having visited Salt Lake City and Ogden en route to Yellowstone, you go direct to Colorado after your five day trip around the Park.

Colorado is host each summer to a hundred thousand visitors. Many come to spend their entire vacation days here—some remain for the full summer season. It must be attractive—and it is.

Estes Park Village, situated just outside of the boundary of Rocky Mountain National Park is nestled in a picturesque park, the hub of an immense, cool, green land of streams and waterfalls, of pine forests and quiet valleys, of snow-capped peaks that reach toward the blue of a western sky.

In "the Village," a curious combination of what was the old West mingled with what is sometimes termed the effete East puzzles you. You can't tell cowboy from "dude"—native from New Yorker, and nobody cares. There's an air of informality that makes you feel perfectly at home. That's Colorado . . . its hospitality . . . its stock in trade.

Away from the village—apart from its busy, though leisurely activities, are numerous rustic resorts, ideally located in lovely valleys or perched on the sides of sloping mountains. Such a site—the latter—is that of the Estes Park Chalets. Across the Continental Divide, Grand Lake Lodge is similarly situated, away from the busy little village of Grand Lake.

From "The Chalets," innumerable trails lead off to the more inner recesses of the massive mountain country which surrounds it. To the south is Long's Peak, the mighty, helmeted captain of the grand company of peaks constantly on dress parade for the benefit of all visitors to this region. To the north and west are countless

little lakes seemingly dropped into great gorges—pine fringed, cool, quiet.

Many of the sylvan retreats can be reached by motor . . . many more are accessible by horse trail . . . some can be reached only on foot, by thrilling climbs over exciting, though safe trails. No need for anyone to want for things to do.

Grand Lake, located on the western slope of the Continental Divide, is the home of "the highest Yacht Club in the world." Its shores are dotted with summer homes—some imposing—others small, rustic—all, however, set in pine-shrouded, secluded spots with commanding views of lake, forest and snow-capped mountain peaks.

The motor trip, through beautiful Big Thompson Canyon to Estes Park . . . across the Divide to Grand Lake . . . back over the Divide at a more southerly point . . . through historic old Idaho Springs . . . thence through Denver's Mountain Parks and over Lookout Mountain, provides a variety of vistas, each enticingly different. A trip replete with thrills over roadways safe, smooth and startling.

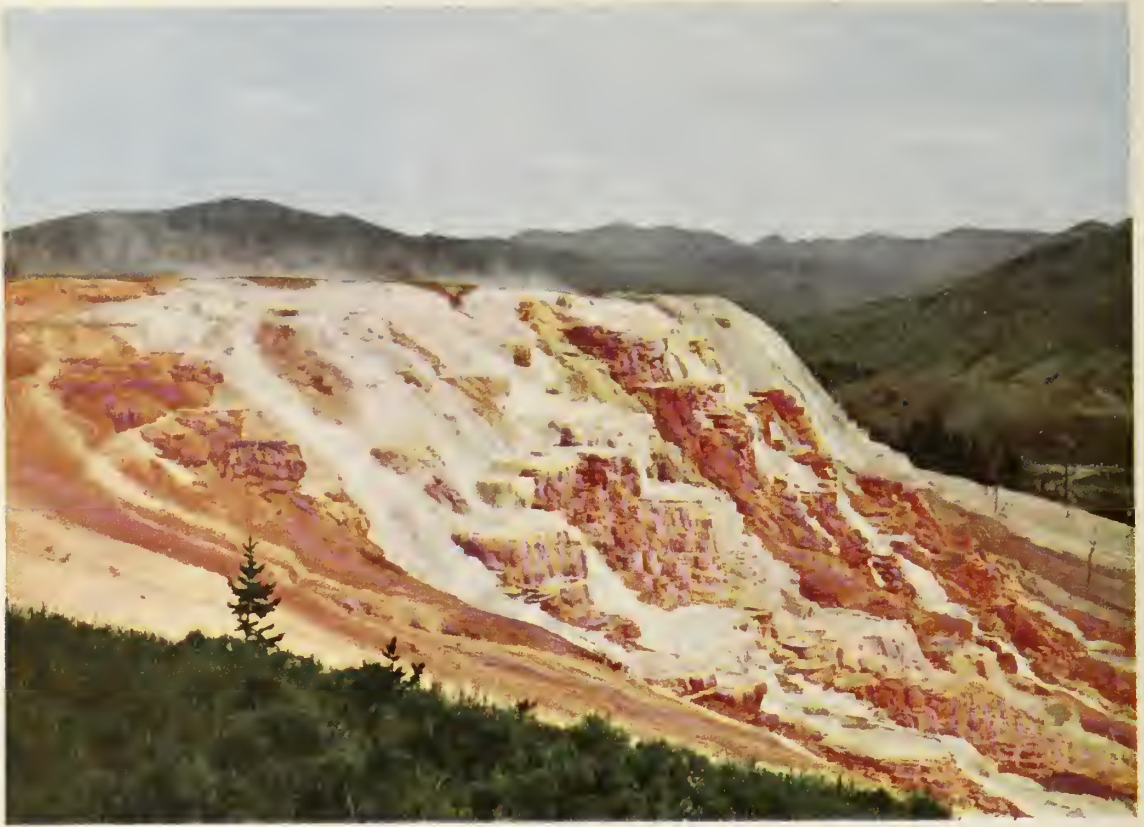
Overland Route "YR" Circle Tours, like all of its companion tours, offer real values at bargain travel prices.

In these days of careful buying with particular attention to costs, it's just as important to analyze what you get for what you spend.



GUESTS OF THE "CHALETS" ALL SET FOR THE TRAILS





Natural Color Photograph

YELLOWSTONE'S MAMMOTH HOT SPRINGS

## Story of the Trip by Days

**SATURDAY—MONDAY**—Leave Chicago in the evening, a guest on the Overland Route's splendid Los Angeles Limited. To Omaha via the Chicago & North Western's direct route. West from Omaha, after a short stop-over next morning, via the Union Pacific.

**SUNDAY—TUESDAY**—Restful hours . . . surrounded by every travel luxury . . . straight across Nebraska's fertile farm lands, Wyoming's open grazing lands . . . reaching Cheyenne, famed frontier town and now the thriving state capital of Wyoming, in the early evening.

**MONDAY—WEDNESDAY**—Arrive Salt Lake City the second morning after a trip through winding Weber Canyon, just out of Ogden. Motor about the city, visiting numerous Mormon shrines, the University Campus, the luxuriously appointed capitol. Enjoy a visit to the Tabernacle, with its widely heralded acoustic properties . . . its captivating organ recital.

Swim in the buoyant blue waters of Great Salt Lake . . . then motor to Ogden for dinner at the Bigelow Hotel, which is followed by a twilight trip through beautiful Ogden Canyon, returning to your special Pullmans to leave for a cool, comfortable, overnight trip to Yellowstone.

**TUESDAY—THURSDAY**—Arriving at West Yellowstone in the early morning, you breakfast in Union Pacific's

splendid, rustic dining room—then drive away to Old Faithful in motor bus parties, competently chauffeured by courteous young men who know the country thoroughly. Luncheon at Old Faithful. The afternoon is devoted to a trip over the steaming hot water formations. In the evening, enjoy the entertainment and dancing provided here, as at all lodges and hotels throughout the park.

**WEDNESDAY—FRIDAY**—In the morning you may again explore the fantastic region about Old Faithful, on foot or in the saddle—with or without guide. After luncheon, a motor trip crossing the Continental Divide at two points, brings you to Yellowstone Lake for an overnight stop. Fishing, boating, watching the bears at their evening meal or just resting will occupy your time.

**THURSDAY—SATURDAY**—The morning ride to Canyon, with a stop at Mud Geyser, takes you across Hayden Valley—a famous winter haven of Yellowstone's tremendous herds of elk . . . The Grand Canyon of the Yellowstone—breath-taking in its grandeur and impressive beyond description—can be viewed in all its multi-colored moods during the full day which you spend on its brink.

**FRIDAY—SUNDAY**—Nothing could be more inspiring than a day at the Canyon. All morning is yours to go as you



please and after luncheon a fascinating motor trip over spectacular Dunraven Pass, stopping at Tower Falls and skirting the Canyon at a point where it is enchantingly different, brings you to Mammoth Hot Springs for an overnight stop.

**SATURDAY—MONDAY**—In the morning you have the opportunity to visit the terraces at Mammoth before leaving by motor bus for West Yellowstone. En route to the western entrance to the Park, you stop at Norris Geyser Basin—the most unusual and varied group of freak formations in the Park. Luncheon at Union Pacific's Dining room, and you leave for Colorado's mountain playgrounds, traveling through the magnificent region between Yellowstone and Ashton, Idaho, by daylight. The mighty peaks of Grand Teton National Park can be seen in the distance.

**SUNDAY—TUESDAY**—The big red buses of the Rocky Mountain Parks Transportation Co. are all set for you when you arrive at Greeley, Colorado, at noontime. They carry you across fertile irrigated, crop-laden acres and then into the mountains via the Big Thompson Canyon—a perfect and startling introduction to the glories of Colorado's Rockies whose charm captivates you. The buses arrive at the Estes Park Chalets in midafternoon. Your stop at the Chalets—the warm welcome, the cheer of great log fires, the excellent meals, the attentive service and the clean, pure, pine-scented air—is an experience you'll never forget. Rocky Mountain National Park with its superb Alpine landscapes and towering granite peaks includes the finest grouping of mountain scenery in the entire Rockies. Dominating the Park stand the lofty peaks of the Continental Divide. Here you will find activities to suit every taste. In following any of the innumerable trails and roadways,—either hiking, horseback riding or by automobile—each turn discloses new vistas surprising in their loveliness and incomparable beauty.

As the sun dips below the jagged peaks of the western horizon and the purple haze of twilight creeps through the

Park, far different forms of entertainment beckon—from the ball-room calls the captivating music of the dance—in the game room are the card game, but many will prefer to stroll in the silvery moonlight.

**MONDAY—WEDNESDAY**—All morning is yours to hike, ride, golf, fish, swim or just to loaf luxuriously in big easy chairs or on the broad verandas with all outdoors before you. The atmosphere of the Chalets—the fascination of its setting and its abundance of activities will captivate you. (If you leave Chicago on a Saturday "YR" Circle Tour you can spend two additional delightful days at the Chalets for only \$12.00 . . . join the "YR" party leaving the Chalets at 1:30 p.m. on Wednesday, and complete the entire balance of the trip to Chicago, under escort.)

In the afternoon you are driven across the Continental Divide to gorgeous Grand Lake, where you spend the night.

**TUESDAY—THURSDAY**—From Grand Lake to Denver, you cross the Continental Divide at Berthoud Pass, motor through Clear Creek Canyon to Idaho Springs for luncheon and then climb back up through Denver's mountain parks only to drop down again, from Lookout Mountain on the picturesque Lariat Trail to Golden, Colorado, and thence into Denver in the afternoon—an all-day trip crammed full of thrilling scenes of unlimited variety. Dinner is served at the Cosmopolitan Hotel and in the late evening you entrain for Chicago and home.

**WEDNESDAY—FRIDAY**—Restful, easy-riding comfort across Nebraska via Union Pacific's steel highway, stopping at Omaha for a brief time in midafternoon. You then continue on over the Chicago & North Western, through fertile Iowa and Illinois farming regions, to Chicago.

**THURSDAY—SATURDAY**—You arrive at the "North Western's" Chicago Passenger Station . . . "the end of a perfect vacation trip."



Natural Color Photograph

THE FALL RIVER ROAD TAKES YOU THROUGH HORSESHOE PARK

## Colorado Springs Extension

(Arrangements must be made at time of booking)

For little additional expense, members of "YR" Circle Tour parties may spend a thrill-crowded day in Colorado Springs, visiting its well-known scenic show spots.

You remain overnight at the Cosmopolitan Hotel—room with bath . . . leave next morning by train . . . arrive Colorado Springs for a motor trip to Garden of the Gods,

South Cheyenne Canyon and Seven Falls. After luncheon at the Antlers Hotel—a thrilling drive to the summit of imposing Pikes Peak.

Dining en route from Colorado Springs by train, you arrive Denver to leave at 11:30 p.m. aboard the "Mountain Bluebird" for the return journey "back East."

### "YR" Circle Tours Leave Chicago as follows:

TOUR		TOUR		TOUR		TOUR	
YR—1	Mon., June 15	YR—7	Mon., July 6	YR—13	Mon., July 27	YR—19	Mon., Aug. 17
YR—2	Sat., June 20	YR—8	Sat., July 11	YR—14	Sat., Aug. 1	YR—20	Sat., Aug. 22
YR—3	Mon., June 22	YR—9	Mon., July 13	YR—15	Mon., Aug. 3	YR—21	Mon., Aug. 24
YR—4	Sat., June 27	YR—10	Sat., July 18	YR—16	Sat., Aug. 8	YR—22	Sat., Aug. 29
YR—5	Mon., June 29	YR—11	Mon., July 20	YR—17	Mon., Aug. 10	YR—23	Mon., Aug. 31
YR—6	Sat., July 4	YR—12	Sat., July 25	YR—18	Sat., Aug. 15	YR—24	Sat., Sept. 5

## Detailed Schedule

Lv. Chicago, Ill.	9:30 p.m.	Mon. Sat.	C. & N. W. Ry.	Lv. Green River, Wyo.	3:30 a.m.	Tue. Sun.	Un. Pac. Sys.
Ar. Omaha, Nebr.	9:35 a.m.	Tue. Sun.	"	Ar. Greeley, Colo.	12:37 p.m.	Tue. Sun.	"
Lv. Omaha, Nebr.	10:07 a.m.	Tue. Sun.	Un. Pac. Sys.	<b>Three-day Automobile Tour of Rocky Mountain National Park</b>			
Ar. Salt Lake City, Utah	10:35 a.m.	Wed. Mon.		Lv. Greeley, Colo.	1:15 p.m.	Tue. Sun.	Automobile
Headquarters—Hotel Utah—City sightseeing trip in the morning—				Ar. Estes Park Chalets	4:15 p.m.	Tue. Sun.	"
Noon Organ Recital at Mormon Tabernacle. Trip to Saltair Beach				Many side trips available from Estes Park Chalets.			
by automobile in afternoon, thence to Ogden by auto; Dinner at				Lv. Estes Park Chalets	1:30 p.m.	Wed. Mon.	"
Bigelow Hotel. Evening tour through Ogden Canyon.				Ar. Grand Lake	5:30 p.m.	Wed. Mon.	"
Lv. Ogden, Utah	9:05 p.m.	Wed. Mon.	Un. Pac. Sys.	Lv. Grand Lake	8:15 a.m.	Thu. Tue.	"
Ar. West Yellowstone,				Ar. Idaho Springs	11:45 a.m.	Thu. Tue.	"
Mont.	7:30 a.m.	Thu. Tue.	"	Luncheon at Placer Inn.			
<b>Five-Day Automobile Tour of Yellowstone National Park</b>				Lv. Idaho Springs	1:00 p.m.	Thu. Tue.	"
Lv. West Yellowstone,				Ar. Denver, Colo.	4:30 p.m.	Thu. Tue.	"
Mont.	9:30 a.m.	Thu. Tue.	Automobile	Headquarters—Cosmopolitan Hotel.			
Stopping at Fountain Paint Pots and Great Fountain Geyser.				Lv. Denver, Colo.	11:30 p.m.	Thu. Tue.	Un. Pac. Sys.
Ar. Old Faithful	11:46 a.m.	Thu. Tue.	Automobile	Ar. Omaha, Nebr.	3:25 p.m.	Fri. Wed.	"
Lv. Old Faithful	1:50 p.m.	Fri. Wed.	"	Lv. Omaha, Nebr.	3:45 p.m.	Fri. Wed.	C. & N. W. Ry.
Stopping at Thumb Paint Pots and Fishing Cone.				Ar. Chicago, Ill.	7:00 a.m.	Sat. Thu.	"
Ar. Lake	4:58 p.m.	Fri. Wed.	"	<b>COLORADO SPRINGS EXTENSION</b>			
Lv. Lake	10:00 a.m.	Sat. Thu.	"	<b>Arrangements Must be Made at Time of Booking</b>			
Stopping at Mud Geyser and Inspiration Point.				Headquarters—Cosmopolitan Hotel (room with bath).			
Ar. Grand Canyon	11:46 a.m.	Sat. Thu.	"	Lv. Denver, Colo.	7:45 a.m.	Fri. Wed.	D. & R.G.W.R.R.
Lv. Grand Canyon	1:35 p.m.	Sun. Fri.	"	Ar. Colorado Springs, Colo.	9:55 a.m.	Fri. Wed.	"
Via Dunraven Pass stopping at Tower Falls.				Luncheon at Antlers Hotel. Morning Trip—South Drive, Garden			
Ar. Mammoth Hot Springs	4:47 p.m.	Sun. Fri.	"	of Gods, South Cheyenne Canyon and Seven Falls. Afternoon			
Lv. Mammoth Hot Springs	8:55 a.m.	Mon. Sat.	"	trip—Pikes Peak by Auto.			
Stopping at Norris Geyser Basin.				Lv. Colorado Springs, Colo.	6:10 p.m.	Fri. Wed.	D. & R.G.W.R.R.
Ar. West Yellowstone,				Ar. Denver, Colo.	8:30 p.m.	Fri. Wed.	"
Mont.	11:10 a.m.	Mon. Sat.	"	Lv. Denver, Colo.	11:30 p.m.	Fri. Wed.	Un. Pac. Sys.
Lv. West Yellowstone,				Ar. Omaha, Nebr.	3:25 p.m.	Sat. Thu.	"
Mont.	1:25 p.m.	Mon. Sat.	Un. Pac. Sys.	Lv. Omaha, Nebr.	3:45 p.m.	Sat. Thu.	C. & N. W. Ry.
Lv. Poccatello, Idaho	8:40 p.m.	Mon. Sat.	"	Ar. Chicago, Ill.	7:00 a.m.	Sun. Fri.	"

### Cost of Complete Tour

#### FROM CHICAGO, RETURNING TO CHICAGO

	With Rail Ticket	Without Rail Ticket
Two persons occupying a lower berth, each.....	\$193.38	\$134.03
One person occupying a lower berth.....	211.51	152.16
One person occupying an upper berth.....	204.25	144.90
Two persons occupying a compartment, each.....	226.38	167.03
Two persons occupying a drawing room, each.....	239.50	180.15
Three persons occupying a drawing room, each.....	218.09	158.74

Colorado Springs Extension \$15.90 additional—single room at Cosmopolitan Hotel 50c extra.

Additional compartment and drawing room rates, also rates for incomplete tours on application.

The above rates shown with and without rail fare from Chicago are based on the "Lodge Way" through Yellowstone. If Hotels are used in Yellowstone the rate is \$8.50 higher.





MT. CARMEL HIGHWAY  
TUNNEL WINDOWS FRAME  
GORGEOUS VISTAS

## SIXTEEN-DAY "YZ" CIRCLE TOUR

Yellowstone—Zion—Grand Canyon—Bryce Canyon  
National Parks—Cedar Breaks and  
Salt Lake City

Can't you just picture the pioneers, in the old Covered Wagon Days, trying to imagine a sixteen-day trip which would take them over several thousand miles of picturesque roadways and highways—many of them over and through the mountains? And suppose they were asked to imagine, too, that within this brief time they could have ample opportunity to enjoy at lesiure the numerous regions visited on one of our "YZ" Tours. Incredible, to say the least, was such an idea—and not so long ago either. To have added, in those days, the supposition that you could accomplish such a "miracle" without a worry or care, and in perfect comfort would have been the "last straw."

The idea still retains its thrill—but the "miracle" of yesterday can be performed for you today with no more effort than it takes to fill in a few brief bits of information such as that requested opposite page 56.

"YZ" Circle Tours do offer an exceptional variety of unusual attractions, and when you balance cost with value, the latter minimizes the former.

Going direct to Yellowstone, you enter the Park at Union Pacific's western gateway—by far the most popular entrance. Starting your trip by motor at this point you see all of the Park in its natural sequence.

Yellowstone has been justly dubbed "Nature's Carnival." Its geysers spouting steam and tinted mud . . . vividly colored pools seething and boiling . . . hot springs bubbling through the earth's erupted crust . . . gorgeous rock terraces dazzling in the sunlight . . . falls dropping thunderously down colorful, canyon walls—will thoroughly convince you of Nature's great "showmanship."







LEFT—THE SWIMMING  
POOL AT ZION LODGE



Natural Color Photograph

RIGHT—ALONG THE EAST  
RIM TRAIL AT ZION

None the less intriguing, yet of far different appeal, are the five famous natural wonderlands which the Southern Utah-Arizona group offers you on a "YZ" Circle Tour.

You'll find Zion National Park a symphony of color, form and friendliness. Its stupendous gorge with mighty walls tinted in ever-changing shades of deepest red, pink and white, offers a limitless variety of splendor.

Robin Hood would have chosen Kaibab National Forest as his dream of paradise. Its virgin stands of pine, spruce and fir trees, artistically intermixed with charming aspen copses, are "home" to thousands of graceful deer and to the rare and beautiful little white-tailed squirrel.

In Grand Canyon, Nature carved her eternal masterpiece with tools of wind and water. Grand Canyon is an epic of erosion. Thirteen miles from rim to rim it presents from Union Pacific's Grand Canyon Lodge on the towering North Rim an endless aspect of terraces, spires, gorges—scarlet in the sunlight—tempered to purple and liquid silver in the shadows.

The vast natural amphitheatre that is Bryce Canyon National Park displays another mood of Nature most amazing and enchanting. To stand on the rim of this canyon and look down is to gaze upon all the fairy cities of fabledom, painted in every color, and blended shades of color, known to man.

Cedar Breaks National Monument as viewed from the rim—a vast expanse more massive than Bryce Canyon, yet less delicate of form—is a riot of color unbelievably beautiful.

Imagination, after all, has its limitations. It was difficult for our ancestors to comprehend the ease with which we travel today. And it is just as difficult today for us to believe such exquisiteness exists as is found in the regions visited by the "YZ" Circle Tours, whose cost per pleasure-packed minute is infinitesimal.



## Something Different Every Day

**SATURDAY**—Early afternoon . . . Chicago & North Western's Chicago Passenger Station . . . a busy though orderly scene . . . Overland Route's luxurious and comfortable Gold Coast Limited—waiting . . . an "All aboard" and your fun begins . . . your worries cease. Across the mighty Mississippi . . . over the muddy Missouri and into Omaha in the wee hours of the morning. A change of locomotives . . . and the "Gold Coast" continues on smoothly, swiftly, over the Union Pacific's "Trail of the Iron Horse."

**SUNDAY**—Splendid meals . . . interesting panoramas . . . charming companions . . . deep-seated comfort . . . historic points of interest along your route . . . the tang of the air as the sun goes down . . . how you can sleep!

**MONDAY**—Evergreen forests, rushing streams, rocky ridges, precipitous slopes along the right-of-way . . . in the distance the Tetons. Arrive West Yellowstone in the early afternoon . . . right on the western Park boundary. Before you know it you are whisked away in comfortable, roomy buses . . . you're in Yellowstone. Scenic thrills galore en route to Old Faithful. And, in the evening, something to entertain you every minute.

**TUESDAY**—All morning to explore the weird formations which completely surround you wherever you go. Nature in convulsions. In the afternoon a twisting trip, with a surprise at every turn, to gorgeous Yellowstone Lake on whose shores your home for the night is picturesquely placed. Fortunate indeed will be those who are guests at "the Lake" for a "full moon" evening.

**WEDNESDAY**—To the Grand Canyon of the Yellowstone for a gasping glance before luncheon. Then, all afternoon to view its magnificence before sundown. In the evening—plenty to occupy your time, as at all lodges and hotels throughout the Park. Programs that provide no end of amusement . . . crackling campfires and community sings . . . music, dancing . . . taps.

**THURSDAY**—The morning is yours to do as you choose. For the more ambitious, Uncle Tom's Trail to the foot of the Great Falls is a treat. Easy stairs to the brink of the falls . . . trails along the canyon rim, for those who have a greater respect for "the altitudes." In the afternoon, to Mammoth Hot Springs, stopping en route at Tower Falls. Overnight at Mammoth—headquarters of the Park.

**FRIDAY**—The terraces—delicate of form, vast in extent, past in color. Join one of the parties conducted by a Government Ranger to thoroughly appreciate these formations. After luncheon, by motor to West Yellowstone . . . through Golden Gate . . . past Obsidian Cliff, Twin Lake,

Gibbon Falls . . . stopping at eerie Norris Geyser Basin. Then, enroute for Southern Utah, where Nature, in still different moods, awaits you.

**SATURDAY**—A brief pause at Salt Lake City, then along the shores of Salt Lake and on to Lund, Utah. Here the deluxe motor buses of the Utah Parks Co. await your arrival to speed you to Zion for an enchanting glimpse of its striking beauty at twilight. After dinner at Zion Lodge—a splendid program . . . an interesting talk by the Ranger Naturalist . . . dance if you wish, or roam out in the open with a brilliant starlit canopy overhead.

**SUNDAY**—Communing with Nature in her most reverent mood, this day will linger in your memory as a Sunday of Sundays. Out in the open . . . on the finest of trails . . . enjoying now a gorgeous glimpse of the East Temple—the West Temple . . . quietly resting in the inspiring Temple of Sinawava, watching the sun work miracles in the ever-changing panorama before you. Sunday in Zion!

**MONDAY**—Mid-morning finds you gazing, gasping, as you stand at one of the tunnel windows on the new Mt. Carmel Highway, en route to the Grand Canyon. Through quaint Mormon villages . . . lunching at quiet Kanab . . . winding through the Kaibab with all eyes watching for the flash of a fleeting white-tailed squirrel—a view of browsing deer . . . then, Grand Canyon, austere, breath-taking. And Grand Canyon Lodge—perfect in its every detail.

**TUESDAY**—All day at Grand Canyon. Visit Cape Royal, Point Imperial, Point Sublime or any of dozens of points from which you may enjoy the awesome grandeur of this masterpiece of Nature. Motor out . . . walk along the rim trails . . . horseback down into the canyon . . . or just rest on the broad verandas or before the great plate glass windows of the lounge. From wherever you choose to view Grand Canyon, the picture is divine. The unusual Recreation Hall is a scene of lively entertainment in the evening.

**WEDNESDAY**—Riding again through the Kaibab . . . across prismatic plains . . . luncheon at Kanab . . . and, at 4:30 in the afternoon, Bryce Canyon. Before dinner, an opportunity to stand on the rim of the canyon at sunset, when the delicate colors are most vivid—most striking. Were you to visit Bryce a dozen times, you still wouldn't believe such exquisiteness could exist.

**THURSDAY**—To really appreciate the delicacy of Bryce Canyon's fantastic formations, follow the trails, on foot or in the saddle. The myriad marvels of Nature's handiwork will stretch your imagination almost to the breaking point. En route to Cedar City after luncheon, a stop at Cedar Breaks—a vista of its tremendous formations splashed with



Natural Color Photograph

TYPICAL DELUXE CABINS AT BRYCE



every color of the rainbow will add another shock to your senses. Indescribable beauty. Dinner at Hotel El Escalante in Cedar City, the gateway to the Utah-Arizona wonderlands. Overnight to Salt Lake City.

**FRIDAY**—A restful, leisurely day in Salt Lake City, motoring about . . . visiting historic Mormon shrines . . . a dip in Salt Lake and its unique thrill . . . then relax, aboard the Overland Route's famous Los Angeles Limited for the train trip home.

**SATURDAY**—A day of rest, of solid comfort, of "meals that appeal." Every travel luxury to make your journey one of greatest pleasure—Union Pacific personnel providing the excellence of service which has gained such an enviable reputation throughout the travel world. Omaha in late afternoon, from where the "North Western" provides you with "the best of everything" to Chicago.

**SUNDAY**—Arrive Chicago in mid-morning, after a glorious farewell breakfast in the diner.

**"YZ" Circle Tours Leave Chicago as Follows:**

Tour	Tour	Tour	Tour
YZ—1.....Sat., June 20	YZ—4.....Sat., July 11	YZ—7.....Sat., Aug. 1	YZ—10.....Sat., Aug. 22
YZ—2.....Sat., June 27	YZ—5.....Sat., July 18	YZ—8.....Sat., Aug. 8	YZ—11.....Sat., Aug. 29
YZ—3.....Sat., July 4	YZ—6.....Sat., July 25	YZ—9.....Sat., Aug. 15	YZ—12.....Sat., Sept. 5

**Detailed Schedule**

Lv. Chicago, Ill.....	2:30 p.m.	Sat.	C. & N. W. Ry.	Lv. Zion Lodge.....	9:45 a.m.	Mon.	Automobile
Ar. Omaha, Nebr.....	3:05 a.m.	Sun.	"	Via the New Mt. Carmel Highway.			
Lv. Omaha, Nebr.....	3:25 a.m.	Sun.	Un. Pac. Sys.	Ar. Kanab Lodge.....	11:50 a.m.	Mon.	"
Lv. Cheyenne, Wyo.....	3:40 p.m.	Sun.	"	Lv. Kanab Lodge.....	1:00 p.m.	Mon.	"
Lv. Green River, Wyo.....	1:05 a.m.	Mon.	"	Through beautiful Kaibab Forest.			
Lv. Pocatello, Idaho.....	7:45 a.m.	Mon.	"	Ar. Grand Canyon Lodge.....	6:00 p.m.	Mon.	"
Ar. West Yellowstone, Mont.....	2:25 p.m.	Mon.	"	Tuesday—At Grand Canyon. Side trips available.			
<b>Five-Day Automobile Tour of Yellowstone National Park</b>				Lv. Grand Canyon Lodge.....	9:15 a.m.	Wed.	"
Lv. West Yellowstone, Mont.....	2:30 p.m.	Mon.	Automobile	Ar. Kanab Lodge.....	12:30 p.m.	Wed.	"
Stopping at Fountain Paint Pots and Great Fountain Geyser.				Lv. Kanab Lodge.....	1:30 p.m.	Wed.	"
Ar. Old Faithful.....	4:37 p.m.	Mon.	Automobile	Ar. Bryce Canyon Lodge.....	4:30 p.m.	Wed.	"
Lv. Old Faithful.....	1:50 p.m.	Tue.	"	Thursday Morning at Bryce Canyon.			
Stopping at Thumb Paint Pots and Fishing Cone.				Lv. Bryce Canyon Lodge.....	1:30 p.m.	Thur.	"
Ar. Lake.....	4:58 p.m.	Tue.	"	Ar. Cedar Breaks.....	4:00 p.m.	Thu.	"
Lv. Lake.....	10:00 a.m.	Wed.	"	Ample time to view this colorful amphitheatre.			
Stopping at Mud Geyser and Inspiration Point.				Lv. Cedar Breaks.....	4:30 p.m.	Thu.	"
Ar. Grand Canyon.....	11:46 a.m.	Wed.	"	Through beautiful Cedar Canyon.			
Lv. Grand Canyon.....	1:35 p.m.	Thu.	"	Ar. Cedar City, Utah.....	6:00 p.m.	Thu.	"
Via Dunraven Pass stopping at Tower Falls.				Dinner at El Escalante Hotel.			
Ar. Mammoth Hot Springs.....	4:47 p.m.	Thu.	"	Lv. Cedar City, Utah.....	8:30 p.m.	Thu.	Un. Pac. Sys.
Lv. Mammoth Hot Springs.....	1:30 p.m.	Fri.	"	Ar. Salt Lake City, Utah.....	6:20 a.m.	Fri.	"
Stopping at Norris Geyser Basin.				Sleepers may be occupied until 7:30 a.m.			
Ar. West Yellowstone, Mont.....	4:40 p.m.	Fri.	"	Headquarters—Hotel Utah. City sightseeing trip in the morning.			
Lv. West Yellowstone, Mont.....	7:00 p.m.	Fri.	Un. Pac. Sys.	Noon Organ Recital at Mormon Tabernacle. Trip to Saltair Beach by automobile in the afternoon.			
Ar. Salt Lake City, Utah.....	7:15 a.m.	Sat.	"	Lv. Salt Lake City, Utah.....	5:35 p.m.	Fri.	Un. Pac. Sys.
Lv. Salt Lake City, Utah.....	8:00 a.m.	Sat.	"	Lv. Cheyenne, Wyo.....	8:20 a.m.	Sat.	"
Ar. Lund, Utah.....	2:40 p.m.	Sat.	"	Ar. Omaha, Nebr.....	8:15 p.m.	Sat.	"
<b>Six-Day Automobile Tour of Utah-Arizona Scenic Wonderlands</b>				Lv. Omaha, Nebr.....	8:50 p.m.	Sat.	C. & N. W. Ry
Lv. Lund, Utah.....	3:00 p.m.	Sat.	Automobile	Ar. Chicago, Ill.....	9:20 a.m.	Sun.	"
Ar. Zion Lodge.....	6:15 p.m.	Sat.	"				
Sunday—In Zion Canyon. Auto Trip to Temple of Sinawava and the Narrows. Many trips available.							

**Cost of Complete Tour**

FROM CHICAGO, RETURNING TO CHICAGO	With Rail Ticket	Without Rail Ticket
Two persons occupying a lower berth, each.....	\$236.10	\$170.45
One person occupying a lower berth.....	256.54	190.89
One person occupying an upper berth.....	248.35	182.70
Two persons occupying a compartment, each.....	273.40	207.75
Two persons occupying a drawing room, each.....	287.65	222.00
Three persons occupying a drawing room, each.....	263.65	198.00
Additional drawing room and compartment rates, also rates for incomplete tour on application.		
Above rates based on the "Lodge Way" through Yellowstone. Rates via Hotels \$8.50 higher.		



Natural Color Photograph

GRAND CANYON  
FROM CAPE ROYAL

## TEN DAY "Z" CIRCLE TOUR

Zion—Grand Canyon—Bryce Canyon National Parks  
Cedar Breaks—Salt Lake City

Overland Route Circle Tours *are* planned to provide just what the summer vacation traveler wishes—just what he requests. A great many of our former patrons have suggested that we operate a short, inexpensive tour to include only Salt Lake City and the five hundred mile spectacular circle tour of Utah-Arizona wonderlands. The ten-day "Z" Circle Tour, offered for the first time this year, is our answer.

You spend all of your precious vacation hours in the West "doing" thoroughly this newest, most unusual region in the country—going directly from Chicago to Cedar City, Utah—Union Pacific's gateway to this land of superlative delights—and returning directly to Chicago after a most pleasant day's stop-over in Salt Lake City.

Zion, with its great gorge—colorful, sheer, sublime. Grand Canyon—"the shrine of beauty lovers from all the world." Bryce Canyon—"the sensation of the National Parks."

All along the five hundred mile stretch of highways which connects these three outstanding National Parks with each other . . . connects all with Union Pacific's rail terminus and gateway at Cedar City—an endless panorama of charm . . . scenic feature after feature.

Utah's Dixie . . . Mt. Carmel Highway with mile-long tunnel . . . prismatic plains . . . the Kaibab Forest . . . Red Canyon . . . lava fields . . . Cedar Breaks National Monument . . . Cedar Mountain . . . Cedar Canyon—not to mention innumerable other delights as you motor along.

See them all on a brief ten-day, inexpensive "Z" Circle Tour this summer, with a day in Salt Lake City added for good measure.





# What You Do Each Day

**SATURDAY**—Leave Chicago via the Chicago & North Western on the Gold Coast Limited, one of the Overland Route's famous fleet of fine, fast trains to all the West. A continuous pleasant panorama of fertile, rolling farm lands.

**SUNDAY**—From Omaha, in the early morning hours, Union Pacific carries you west over a striking stretch of roadway through historic old Nebraska and Wyoming cities and towns.

**MONDAY**—Through Ogden and Salt Lake City to Lund, Utah, the main line point from which you start your motor tour of tours. Through Cedar City and on to Zion . . . into the canyon . . . past the Lodge and beyond to the Temple of Sinawava for an unforgettable view of this inspiring spot . . . arriving back at the lovely Lodge for dinner and the exquisite charm of the canyon at dusk. Entertainment, nature talk, movies, dancing in the evening.

**TUESDAY**—Motor away at 10:30 A.M. after several pleasant hours in the grip of the canyon's spell. En route to Grand Canyon . . . six huge tunnel portals along magnificent Mt. Carmel Highway, each framing a masterpiece of scenic grandeur . . . Mormon-founded Kanab for luncheon . . . across broad lands of purple sage . . . deep into the Kaibab, with its abundance of deer, its shy white-tailed squirrels. Grand Canyon Lodge . . . an enthusiastic welcome . . . then a dash for the veranda or the "million dollar windows" of the attractive lounge, for the first breath-taking view of Nature's most stupendous spectacle. Evening events at Grand Canyon Lodge are planned for your pleasure. Great log fires . . . informal entertainment . . . music for the dance.

**WEDNESDAY**—Grand Canyon from Cape Royal, with its Angel's Window, presents an entirely different view than at other points along the rim. A mile below and miles

away is the Colorado River, rushing, raging. Beyond the opposite rim you can see for miles out across the desert—the Painted Desert. Point Imperial is likewise fascinatingly different. See them both on a thrilling motor trip over the new Cape Royal Highway, at small additional expense. You have a full day at Grand Canyon to enjoy its sublime beauty—ever-changing as the sun courses its resplendent way from east to west.

**THURSDAY**—Leave Grand Canyon at 8:30 A.M. for Bryce Canyon National Park, stopping for luncheon at Kanab. Back again over the winding road, deep into the Kaibab . . . out across the plains . . . through sparkling canyons . . . past Vermilion Cliffs . . . through Red Canyon . . . then, Bryce Canyon the beautiful—like a glimpse of another world. Sunset enlivens the myriad tints of Bryce Canyon's fragile formations and presents the towering temple peaks, the colorful sculptured depths at their best. Entertainment and dancing enliven the evening at the Lodge.

**FRIDAY**—Along the rim . . . down the trails . . . wherever you go, something new and startling wherever your eyes rest. So accurately has Nature's skill carved out the innumerable statues, statuettes and fragile filigree formations, that there is no need to stretch your imagination one bit to easily discern the various features which your guide will point out to you at every bend in the trail. All morning at Bryce, then by motor to kindred Cedar Breaks, quite similar in composition—less delicate of form—yet more colorful in tints. Red Canyon, Cedar Canyon, and a host of other interesting sights indelibly impressed in your mind all along the highway which leads to Cedar City, dinner and departure for Salt Lake City.

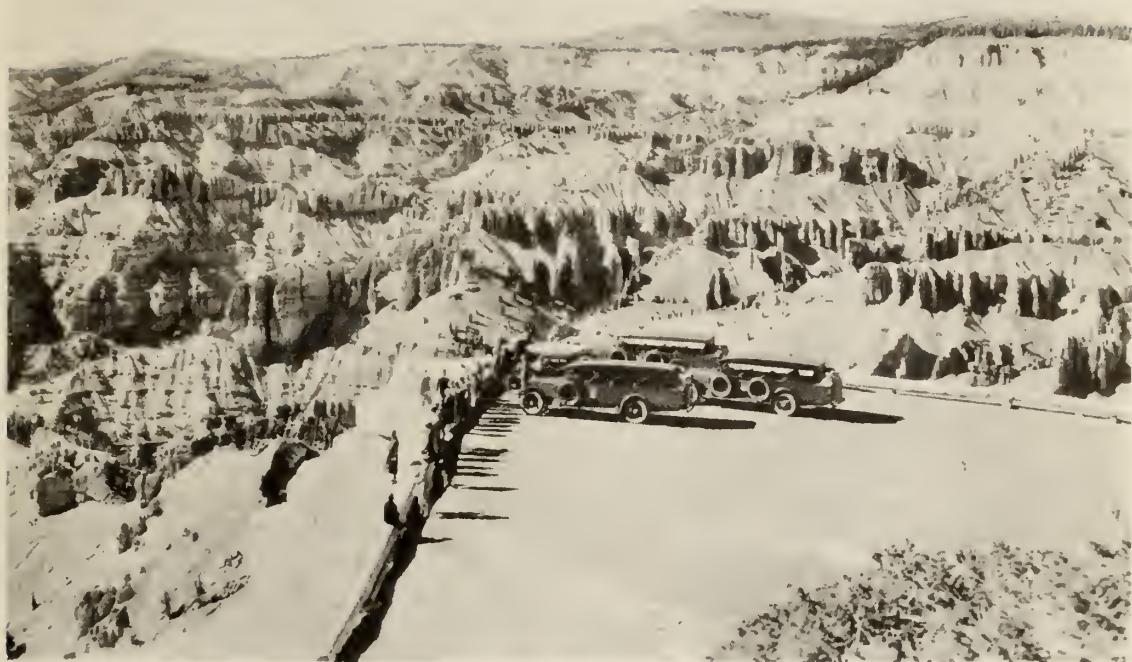
**SATURDAY**—Arrive Salt Lake City to breakfast at the Hotel Utah before starting a leisurely visit to the numerous historic landmarks of the Mormon Capital. A motor trip over the city's broad boulevards in the morning. Temple Square directly opposite the Hotel Utah . . . a splendid noon-day organ recital in the unique Tabernacle . . . A swim in buoyant Salt Lake in mid-afternoon, and in the early evening you settle down, bag and baggage, for a swift and restful trip to Chicago, surrounded by every travel comfort, on the Los Angeles Limited.

**SUNDAY**—Union Pacific safeguards your journey to Omaha from where the "North Western" picks you up and speeds you on your last lap homeward. Meals for which these two great railroads are famous are served in sparkling, smart, dining cars.

**MONDAY**—Arrive Chicago in time for eastern connections.



BRUCE IS BEST VIEWED FROM ITS SPLENDID TRAILS



CEDAR BREAKS' BROAD EXPANSE PRESENTS A VISION OF LOVELINESS

### "Z" Circle Tours Leave Chicago as Follows:

TOUR		TOUR		TOUR		TOUR	
Z-1	Sat., June 20	Z-4	Sat., July 11	Z-7	Sat., Aug. 1	Z-10	Sat., Aug. 22
Z-2	Sat., June 27	Z-5	Sat., July 18	Z-8	Sat., Aug. 8	Z-11	Sat., Aug. 29
Z-3	Sat., July 4	Z-6	Sat., July 25	Z-9	Sat., Aug. 15	Z-12	Sat., Sept. 5

### Detailed Schedule

Lv. Chicago, Ill.	2:30 p.m.	Sat.	C. & N. W. Ry.	Ar. Kanab Lodge	12:30 p.m.	Thu.	Automobile
Ar. Omaha, Nebr.	3:05 a.m.	Sun.	"	Lv. Kanab Lodge	1:30 p.m.	Thu.	"
Lv. Omaha, Nebr.	3:25 a.m.	Sun.	Un. Pac. Sys.	Ar. Bryce Canyon Lodge	4:30 p.m.	Thu.	"
Lv. Cheyenne, Wyo.	3:40 p.m.	Sun.	"	Friday Morning—Trail trips available at Bryce Canyon.			
Ar. Salt Lake City, Utah	7:35 a.m.	Mon.	"	Lv. Bryce Canyon Lodge	1:30 p.m.	Fri.	"
Lv. Salt Lake City, Utah	8:00 a.m.	Mon.	"	Ar. Cedar Breaks	4:00 p.m.	Fri.	"
Ar. Lund, Utah	2:40 p.m.	Mon.	"	Ample time to view this colorful amphitheatre.			
<b>Five-Day Automobile Tour of Utah-Arizona</b>				Lv. Cedar Breaks	4:30 p.m.	Fri.	"
<b>Scenic Wonderlands</b>				Through beautiful Cedar Canyon.			
Lv. Lund, Utah	3:00 p.m.	Mon.	Automobile	Ar. Cedar City, Utah	6:00 p.m.	Fri.	"
Ar. Zion Lodge	6:15 p.m.	Mon.	"	Dinner at El Escalante Hotel.			
Auto Trip to Temple of Sinawava and the Narrows.				Lv. Cedar City, Utah	8:30 p.m.	Fri.	Un. Pac. Sys.
Lv. Zion Lodge	9:45 a.m.	Tue.	"	Ar. Salt Lake City, Utah	6:20 a.m.	Sat.	"
Via the New Mt. Carmel Highway.				Sleepers may be occupied until 7:30 a.m.			
Ar. Kanab Lodge	11:50 a.m.	Tue.	"	Headquarters—Hotel Utah. City sightseeing trip in the morning—			
Lv. Kanab Lodge	1:00 p.m.	Tue.	"	Noon Organ Recital at Mormon Tabernacle. Trip to Saltair Beach			
Through beautiful Kaibab Forest.				by automobile in afternoon.			
Ar. Grand Canyon Lodge	6:00 p.m.	Tue.	"	Lv. Salt Lake City, Utah	5:35 p.m.	Sat.	Un. Pac. Sys.
Wednesday—Side trips available at Grand Canyon.				Lv. Cheyenne, Wyo.	8:20 a.m.	Sun.	"
Lv. Grand Canyon Lodge	9:15 a.m.	Thu.	"	Ar. Omaha, Nebr.	8:15 p.m.	Sun.	"
				Lv. Omaha, Nebr.	8:50 p.m.	Sun.	C. & N. W. Ry.
				Ar. Chicago, Ill.	9:20 a.m.	Mon.	"

### Cost of Complete Tour

#### FROM CHICAGO, RETURNING TO CHICAGO

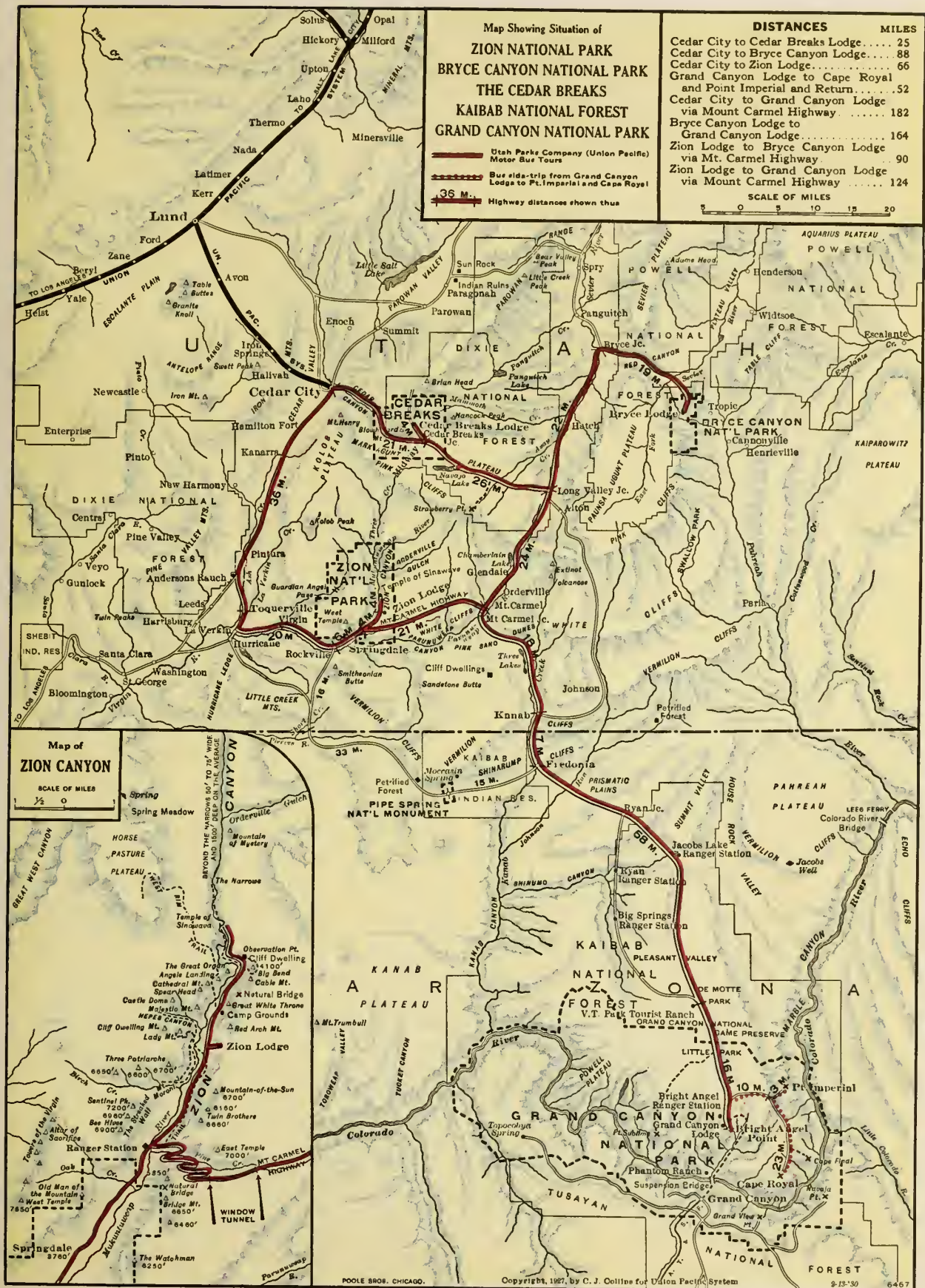
	With Rail Ticket	Without Rail Ticket
Two persons occupying a lower berth, each	\$173.08	\$111.63
One person occupying a lower berth	192.21	130.76
One person occupying an upper berth	184.55	123.10
Two persons occupying a compartment, each	207.95	146.50
Two persons occupying a drawing room, each	221.45	160.00
Three persons occupying a drawing room, each	198.95	137.50

Additional compartment and drawing room rates, also rates for incomplete tour on application.











# FOURTEEN DAY "ZRG" CIRCLE TOUR

Zion—Grand Canyon—Bryce Canyon National Parks—  
Cedar Breaks—Salt Lake City—  
The Royal Gorge—Colorado Springs—Denver

There must be a host of reasons why the Southern Utah-Arizona group of western wonderlands has achieved such tremendous popularity in the few short summer seasons since they were first opened to the nature-lovers of the traveling public in 1924. There are.

First of all, the five major attractions which this region offers, each unique and supreme in its own right, are packed into an area which can be completely circled in four comfortable, pleasure-crowded days of travel by motor. ("ZRG" parties spend seven unforgetably "happy days" in this land of "miracles"). Zion National Park with its austere majesty . . . Kaibab National Forest with its exquisite virgin stands of pine, cedar, spruce and graceful aspen . . . Grand Canyon with its sublime depths and shadows . . . fantastic Bryce Canyon with its flaming minarets . . . Cedar Breaks National Monument—vast, vari-colored.

The lodges, the cabins, all the facilities are new, modern. Grand Canyon Lodge, the most beautiful of all, seems to have grown out of the very canyon walls whose sheer heights it dominates. Each of the lodges is picturesquely situated in the heart of the region it serves . . . excellent service at each is administered by a personnel of

enthusiastic individuals whose every thought is for your comfort, pleasure and entertainment.

Millions of dollars for highways have given to this region a splendid system of excellent roads, the most spectacular stretch of which is found on the new Mt. Carmel Highway. Seventeen State Governors, from the nation at large, journeyed down to Southern Utah last summer to witness the ceremonies which officially opened this most unusual mountain passageway in the world.

The National Park Service, during the past six years, has developed in each of the National Parks in this region, a system of trails unsurpassed anywhere. Not content with the byways which have already opened up hitherto inaccessible beauty spots, each year will see the completion of new trails, new roadways.

Transportation facilities are of the finest. Union Pacific luxurious motor buses are of the newest design—comfortable, roomy. These buses are equipped with unique tops which may be rolled back to afford the maximum view of the scenic spectacles along the highways . . . and may be quickly and easily retrieved for protection against mountain showers or desert sun.

All these are but a few of the reasons why the Utah-Arizona show places have become such a magnet for summer vacation travelers in spite of the fact that they are the nation's newest playgrounds.

"ZRG" Circle Tours make a complete "loop" around these enchanting regions. They include, as well, a trip through the world-famous Royal Gorge and a most satisfying taste of the grandeur of the Colorado Rockies.

When weighing comparative values in pleasure-filled vacation itineraries, again we ask that you give careful consideration to what Overland Route's "ZRG" Circle Tour offers you—as well as what its eight other equally worth-while itineraries include.



PIKES PEAK—THE SENTINEL OF THE ROCKIES



EASTERN ENTRANCE TO MT. CARMEL HIWAY'S MILE-LONG TUNNEL



QUEEN VICTORIA, AT BRYCE—PROOF OF NATURE'S ARTISTRY

## Day by Day Story of Trip

**SUNDAY**—Relieved of all travel cares at the very start of the trip, you leave on the Gold Coast Limited from the Chicago & North Western splendid Chicago Passenger Station. Due west across Illinois and Iowa your swift journey is safeguarded by continuous automatic train control equipment—an invisible guardian which assures you safety.

**MONDAY**—From Omaha, which you reach in the early morning hours, you travel over the Union Pacific—across Nebraska, the northwest tip of Colorado, and into Wyoming, with stops along the line at cities famous in frontier history.

**TUESDAY**—Your route takes you through beautiful Weber Canyon—through Ogden and Salt Lake City—along the shore of the Great Salt Lake—and terminates at Lund, Utah, in the afternoon, where the deluxe motor buses of the Utah Parks Company meet you and carry you, "bag and baggage", to your first "home" in the Southern Utah region, Zion Park Lodge. And, homelike it is with its enchanting atmosphere. You arrive in time for dinner and remain for two nights and a day amidst the charm of its delightful hospitality.

**WEDNESDAY**—Twenty-six miles of trails, unsurpassed in any of the National Parks, a motor trip to the Temple of Sinawava, a unique swimming pool, are but a few of the magnets to attract your crowded hours in this full day at Zion. In the evening, an impromptu entertainment, an

interesting talk by the park naturalist, a dance, or a walk out under the starlit heavens will round out an inspiring day's activities.

**THURSDAY**—Leaving Zion after breakfast, your motor car takes you at once over one of the most unusual mountain highway passages in the world. The new Mt. Carmel Highway, opened for the first time during the 1930 season to regular travel, defies description. Its major tunnel, over a mile long, blasted out of the mountain side, is pierced at six points by picturesque portals, each of which frames a vast vista which is a vision of loveliness.

Beyond this new highway, your route is through quaint Mormon villages, (with a stop at Kanab, Utah, for luncheon) across prismatic plains and into the impressive Kaibab National Forest. The Kaibab, a virgin stand of towering pines and graceful aspen, is the home of a herd of over 20,000 deer, many large groups of which will come out to greet you as you motor through their favorite haunts. The Kaibab is also the home of the rare whitetailed squirrel.

Your all-day ride ends abruptly and most sensationally at the very brink of the Grand Canyon as your bus comes to rest at Grand Canyon Lodge—Union Pacific's gorgeous hostelry. You will enjoy the comforts and the atmosphere of aristocratic informality of Grand Canyon Lodge.

**FRIDAY**—All day at Grand Canyon. Motor trips to Cape Royal, Point Imperial, Point Sublime—saddle trips along the rim or down the trails—are available. Or, perhaps you





Natural Color Photograph

NATURE CARVED THE CATHEDRAL AT BRYCE

may prefer simply to bask in the sunshine on the broad veranda of the Lodge and "drink in" the stupendous panorama before you, whose colorful beauty changes every hour as the sun courses its way across the heavens. Dancing and entertainment enliven the evening hours.

**SATURDAY**—Retracing your motor route part of the way, you drive through the Kaibab, across the plains to Kanab for luncheon, then to Bryce Canyon National Park where you arrive in the late afternoon. Bryce Canyon Lodge is situated only a short way from the rim of Bryce Canyon and you are quartered in the same type of homey, modern and comfortable cabins as at Zion and Grand Canyon. Bryce Canyon will awe the senses of the most imaginative with its labyrinth of grotesque but beautiful figures and fragile filigree carved in rock, flame-vivid in color and tinted with every shade of the spectrum. You remain overnight at Bryce and a pleasant evening of entertainment and dancing is provided.

**SUNDAY**—All day at Bryce—and there are side trips and trail trips without limit for you to choose from. A most popular all-day trip is that to Natural Bridge which may be visited best by horse-back with an experienced guide to lead the way, entertain with his droll western wit and to act as host at luncheon out under the heavens.

**MONDAY**—In the morning, again you may enjoy Bryce Canyon from its far-stretching rim or you may explore its

exquisite formations from foot trails or horse trails which lead down into the canyon. After luncheon your motor buses leave for the return trip to Cedar City. The route is through unusual Red Canyon, past great areas of black angular lava from extinct volcanoes, through fine forests and open "parks" to Cedar Breaks National Monument.

An artist has counted more than sixty tints in Cedar Breaks whose series of vast amphitheatres are eroded to a depth of 2000 feet in an area of 60 square miles. As you stand on the rim of this scintillating show place you cannot help but be impressed with the power of the Creator.

Reluctantly you leave Cedar Breaks on the last stretch of the tour among the Utah-Arizona Wonderlands. As you ride along the way, to your left in the distance can be seen the towers and temples of Zion, which only a few days before were viewed from their very bases. The drive continues on through beautiful Cedar Canyon and you arrive at Cedar City at 6:00 P. M., allowing ample time for visiting curio shops after dinner. The Pullmans leave at 8:30 P. M. for Salt Lake City, via Union Pacific System.

**TUESDAY**—In Salt Lake City your headquarters are at the Hotel Utah. Breakfast over, you spend the morning in a drive over the City's Broad boulevards and return to the Mormon Temple Grounds in time for a walk about the premises and for the noonday organ recital in the historic Tabernacle. After luncheon and an afternoon visit to Saltair Beach you return to your train which leaves on the Denver

and Rio Grande Western for Colorado Springs via the Royal Gorge.

**WEDNESDAY**—The Royal Gorge of the Arkansas with its great and precipitous walls and its rushing river, whose course you follow through the narrow gorge, is the most thrilling feature of a day filled with thrills. At Colorado Springs you detrain in mid-afternoon for overnight at the Antlers Hotel.

**THURSDAY**—In the morning you have the option of a motor trip to the Summit of Pikes Peak—or the Cheyenne Mountain Circle Trip, including the Garden of the Gods, South Cheyenne Canon, Seven Falls, etc. Train leaves at noon for Denver.

Immediately upon arrival the Denver City and Parks trip will be taken, terminating at the Cosmopolitan Hotel. Automobiles are scheduled to leave the hotel at 10:30 P. M. for the Union Station.

**FRIDAY**—You'll welcome the quiet comfort of your splendid train and enjoy the opportunity to ponder over the fascinating experiences of the past two weeks as you travel swiftly eastward via the historic "Overland Route." All day your train clips off mile after mile of your journey home, arriving in Omaha in the late afternoon, where you leave the Union Pacific rails and continue on over the "North Western" for the last lap of your journey back to Chicago.

**SATURDAY**—7:00 A. M.—Chicago—home.

## "ZRG" Circle Tours Leave Chicago as Follows:

Tour	Tour	Tour	Tour
ZRG—1 ..... Sun., June 14	ZRG—5 ..... Sun., July 12	ZRG—8 ..... Sun., Aug. 2	ZRG—11 ..... Sun., Aug. 23
ZRG—2 ..... Sun., June 21	ZRG—6 ..... Sun., July 19	ZRG—9 ..... Sun., Aug. 9	ZRG—12 ..... Sun., Aug. 30
ZRG—3 ..... Sun., June 28	ZRG—7 ..... Sun., July 26	ZRG—10 ..... Sun., Aug. 16	ZRG—13 ..... Sun. Sept. 6
ZRG—4 ..... Sun., July 5			

## Detailed Schedule

Lv. Chicago, Ill. .... 2:30 p.m. Sun. C. & N. W. Ry.	Lv. Bryce Canyon Lodge ..... 1:30 p.m. Mon. Automobile
Ar. Omaha, Nebr. .... 3:05 a.m. Mon. "	Ar. Cedar Breaks. .... 4:00 p.m. Mon. "
Lv. Omaha, Nebr. .... 3:25 a.m. Mon. Un. Pac. Sys.	Ample time to view this colorful amphitheatre.
Lv. Cheyenne, Wyo. .... 3:40 p.m. Mon. "	Lv. Cedar Breaks ..... 4:30 p.m. Mon. "
Ar. Salt Lake City, Utah ..... 7:35 a.m. Tue. "	Through beautiful Cedar Canyon.
Lv. Salt Lake City, Utah ..... 8:00 a.m. Tue. "	Ar. Cedar City, Utah ..... 6:00 p.m. Mon. "
Ar. Lund, Utah. .... 2:40 p.m. Tue. "	Dinner at El Escalante Hotel.
<b>Seven-Day Automobile Tour of Utah-Arizona Scenic Wonderlands</b>	
Lv. Lund, Utah. .... 3:00 p.m. Tue. Automobile	Lv. Cedar City, Utah ..... 8:30 p.m. Mon. Un. Pac. Sys.
Ar. Zion Lodge. .... 6:15 p.m. Tue. "	Ar. Salt Lake City, Utah. .... 6:20 a.m. Tue. "
Wednesday—In Zion Canyon. Many side trips available.	Sleepers may be occupied until 7:30 a.m.
Auto trip to Temple of Sinawava and the Narrows.	Headquarters—Hotel Utah. City sightseeing trip in the morning—
Lv. Zion Lodge ..... 9:45 a.m. Thu. Automobile	Noon Organ Recital at Mormon Tabernacle. Trip to Saltair Beach by automobile in afternoon.
Via the New Mt. Carmel Highway.	Lv. Salt Lake City, Utah ..... 5:00 p.m. Tue. D. & R.G.W.R.R.
Ar. Kanab Lodge. .... 11:50 a.m. Thu. "	Ar. Colorado Springs, Colo. .... 2:40 p.m. Wed. "
Lv. Kanab Lodge ..... 1:00 p.m. Thu. "	Headquarters—Antlers Hotel (room with bath).
Through beautiful Kaibab Forest.	Thursday Morning—Option of trip to Pikes Peak by auto or Garden of the Gods, Cheyenne Mountain Circle Drive.
Ar. Grand Canyon Lodge ..... 6:00 p.m. Thu. "	Lv. Colorado Springs, Colo. .... 12:01 p.m. Thu. D. & R.G.W.R.R.
Friday—At Grand Canyon. Side trips available.	Ar. Denver, Colo. .... 2:15 p.m. Thu. "
Lv. Grand Canyon Lodge ..... 9:15 a.m. Sat. "	City sightseeing trip—Dinner at Cosmopolitan Hotel.
Ar. Kanab Lodge. .... 12:30 p.m. Sat. "	Lv. Denver, Colo. .... 11:30 p.m. Thu. Un. Pac. Sys.
Lv. Kanab Lodge ..... 1:30 p.m. Sat. "	Ar. Omaha, Nebr. .... 3:25 p.m. Fri. "
Ar. Bryce Canyon Lodge ..... 4:30 p.m. Sat. "	Lv. Omaha, Nebr. .... 3:45 p.m. Fri. C. & N. W. Ry.
Sunday—Exploring Bryce Canyon from the brink and along the trails.	Ar. Chicago, Ill. .... 7:00 a.m. Sat. "

*14 days*

## Cost of Complete Tour \$500.

### FROM CHICAGO, RETURNING TO CHICAGO

	With Rail Ticket	Without Rail Ticket
Two persons occupying a lower berth, each.....	\$203.96	\$142.51
One person occupying a lower berth.....	224.96	163.51
One person occupying an upper berth.....	216.55	155.10
Two persons occupying a compartment, each.....	242.20	180.75
Two persons occupying a drawing room, each.....	256.95	195.50
Three persons occupying a drawing room, each.....	232.29	170.84

Additional compartment and drawing room rates, also rates for incomplete tour on application.  
Single rooms available at the Antlers Hotel—additional cost \$2.00.





MT. RAINIER—THE  
"MIGHTY MONARCH"

*Natural Color Photograph*

## FOURTEEN DAY "PNW" CIRCLE TOUR

Pacific Northwest—Mt. Rainier and Jasper National Parks  
Banff—Lake Louise

In the old days, it took stamina, strength and downright grit to push off for the vast domain that was and still is the Pacific Northwest. But those who fought their way out there, over the historic old Oregon Trail, were men of vision with the courage of their convictions. They arrived to find an immense region of scenic grandeur . . . of tremendous potential commercial value, and they remained to plant the seed for the sensational growth of what is today one of the country's most progressive centers of commerce . . . and a veritable scenic "Paradise on Earth" as well.

The entire Pacific Northwest area is today a vast natural playground. An excellent system of splendid and spectacular highways has opened the doorways to countless regions of scenic grandeur for the thousands of visitors who journey out each year to see for themselves the tremendous advance of the nation's youngest region of romance.

The "PNW" Circle Tour is another tour itinerary which was added to our coterie of Overland Route summer-vacation offerings at the



suggestion of our guests of previous years. Its tremendous popularity during its first season, 1930, was a source of much satisfaction to us . . . much pride that our former patrons had prescribed so well.

Those who travel in the congenial company of a "PNW" Tour this summer will be particularly pleased with the charming hospitality which is so characteristic of Pacific Northwest people. In Portland, "The City of Roses" . . . Tacoma, built upon high hills rising sheer from the lapping waters of Puget Sound . . . Seattle, beautifully situated on a hilly site with the snow-capped Olympics in the west and lofty Cascades in the east, you'll sense an atmosphere of "keen appreciation of the privilege of living."

Probably no other single feature in the Northwest will appeal to your imagination as will the great white peak described by the Indians as "The Mountain that was God"—Mt. Rainier. Dominating the whole Cascade Range, it is one of the most imposing mountains on the globe.

Victoria and Vancouver in British Columbia are unique and fascinating. Victoria, capital of the province, is perhaps more English than any other city in the whole Dominion. Located on the southeastern end of Vancouver Island, its quaint old homes and dignified parliament buildings are

surrounded by beautiful gardens. Vancouver, with its busy harbor, has been likened to Liverpool. It is the third largest city in the Dominion. As a climax to a succession of glorious days in the Pacific Northwest, what could surpass the Canadian Rockies? Jasper National Park, Banff, Lake Louise—each a "treat" in itself—all are visited on the return journey.

Jasper's attractions, newer and not quite so well known, yet none the less impressive, will afford



GLISTENING, GLACIAL MT. EDITH CAVELL AT JASPER NATIONAL PARK

you hours of delightful relaxation—going wherever and however you please. Riding, hiking, motoring, swimming, golfing, boating—all are yours to choose from.

And then, magnificent Banff—lovely Lake Louise. Someone has said that within the startling areas about Banff and Lake Louise, there is packed in more mountain majesty per square mile than in any other place in the world. "PNW" Circle Tours were presented to summer vacation travelers, because many of our patrons had suggested just such an itinerary. During their first year these tours were received with an enthusiasm which exceeded our fondest hopes. What better recommendations could they have?



INDUSTRY THRIVES IN PACIFIC NORTHWEST CITIES



# Day by Day Story of the Trip

**SATURDAY**—As you leave Chicago in the evening via the Chicago & North Western Ry. you glance around and marvel at the exquisite loveliness of "The Portland Rose," your traveling home for the next two days. No wonder that its fame has spread since its first sensational trip of last fall.

**SUNDAY**—More happily carefree hours to become better acquainted with the unusual features of your speeding train as it leaves Omaha via the Union Pacific System headed west over historic travel lanes of frontier day fame. Dining car meals, the source of extreme satisfaction on your entire trip will seem even more appetizing in the atmosphere of refinement and finesse of service which is "second nature" on "The Portland Rose."

**MONDAY**—At Pocatello, Idaho, you cross the main line leading to West Yellowstone, Montana, the Union

from new angles. Join a saddle party on a trip across Paradise Valley with its vividly covered carpet of flowers . . . through friendly forests . . . past secluded little lakes whose unrippled surfaces reflecting the mighty mountain add immeasurably to its beauty. Overnight at Paradise Inn—room with bath.

**THURSDAY**—Leaving Paradise Inn at 8:30 A. M. you travel by motor to Seattle, arriving at the Olympic Hotel for luncheon, dinner and overnight—room with bath. In the afternoon a leisurely motor trip takes you over twenty-six miles of Seattle's splendid boulevards—along its inland lakes, through University of Washington's campus, Woodland Park, and through the business section as well.

**FRIDAY**—Leaving Seattle at 9:00 A. M. via Canadian Pacific steamship, you glide northward over the finest scenic approach to British Columbia. Rocky headlands, forested hills, sunny beaches, misty islands slip by across the water on either side of your course. You pass imposing ocean greyhounds, regular line freighters, tramp steamers, and other ships flying the flags of many nations. Arriving at Victoria at 12:45 P. M. you have the entire afternoon to enjoy the English atmosphere of this capital city of British Columbia—a motor trip around the city gives you an excellent opportunity to see the exquisite gardens with their oddly clipped hedges. At 6:00 P. M. you board the Canadian National steamer for dinner and for a cool quiet trip to Vancouver, where you spend the night at the Georgia Hotel—room with bath.

**SATURDAY**—A trip by motor, the feature of which is the drive, through the majestic groves of mammoth fir in Stanley Park, terminates at the Georgia Hotel for luncheon, thence to the Canadian National Station where you climb aboard the train which awaits your arrival to speed you on to Jasper National Park. All afternoon you are in the mountains. Tunnels penetrate the headlands and lofty bridges span the ravines. You follow the course of rushing rivers with their roaring cataracts for miles. The scenery, magnificently impressive all the way is but a foretaste of what will greet you next day.

**SUNDAY**—Arrive Jasper shortly after breakfast in the diner. All day is spent in Jasper National Park, enjoying to the utmost whatever you may choose of a wide variety



BANFF SPRINGS HOTEL IN ITS MAGNIFICENT SETTING

Pacific's popular entrance to Yellowstone National Park. All day your speeding train carries you over the route of the old Oregon Trail through regions rich in romance, whose panoramas present an endless vision of scenic grandeur.

**TUESDAY**—Having followed the beautiful Columbia River's banks for two hundred miles during the early morning hours, you arrive Portland for breakfast at the Multnomah Hotel. The major part of your day is spent on a motor trip over the colorful Columbia River Highway with its unusual twists, turns and tunnels, and its fascinating features—Multnomah Falls, Horsetail Falls, Shepherds Dell, to say nothing of the commanding views of Mt. Hood and the Hood River Valley country. Leave Portland at 4:30 P. M. arriving Tacoma at 8:30 P. M. for overnight at Tacoma Hotel—room with bath.

**WEDNESDAY**—Leave Tacoma at 8:30 A. M. for a delightful motor trip through magnificent virgin forests to Paradise Inn—Mt. Rainier's famous hostelry located in the very shadow of "The Mountain." After luncheon you may choose your own method of enjoying numerous beauty spots with which the region about Paradise Inn is honey-combed. Enjoy a hike over the glaciers . . . the thrill of nature coasting . . . viewing the magnificent mountain



LAKE LOUISE IS JUSTLY CALLED THE "GEM OF THE ROCKIES"

of outdoor sports and scenic mountain marvels. A motor trip to glacier-girt Mt. Edith Cavell is included for you in the day's activities, and a delightful treat it is. The night is spent at Jasper Park Lodge (room with bath).

**MONDAY**—En route to Calgary, you have an opportunity to rest in comfortable travel luxury in preparation for the active days in another group of the Canadian Rockies' superb show-places. A stop is made at Edmonton for sight-seeing tour of the capital of Alberta and for dinner at the Macdonald Hotel.

**TUESDAY**—Leaving Calgary by motor, after breakfast at the Paliser Hotel, the automobile highway parallels the Bow River and as you travel westward, the mountains are directly in front of you. A stop is made at Ghost Dam, thence through the gate and into Banff National Park. After luncheon at Banff Springs Hotel, you motor through the mountains to Lake Louise, stopping en route at Johnson's Canyon, a narrow gorge cut through lofty granite mountains. Lake Louise, whose dark blue waters reflect the many towering peaks which rise sheer from the water's edge, is "tremendous." The Chateau on the shore of Lake Louise, surrounded by immense poppy beds, is exquisite.

**WEDNESDAY**—Shortly before noon, you start on the return motor trip to Calgary, after a delightful morning spent in storing away in your memory one enchanting picture after another—pictures you will never forget. Traversing winding corridors through the mountains, pausing for luncheon at Banff Springs Hotel, you arrive in Calgary in the early evening, where the train awaits to speed you on your journey home.

**THURSDAY**—All day across the vast stretches of Canada's gleaming wheat fields with an opportunity to "stretch a bit" at Saskatoon for an hour at midday, and at Regina in the early evening.

**FRIDAY**—Arriving Winnipeg at 8:10 A. M. you are whisked away in comfortable motor buses for a refreshing drive about the city, returning direct to your train which leaves at 9:15 A. M. for the last lap of your journey home.

**SATURDAY**—Arrive Chicago at 11:35 A. M. at the Chicago & North Western Railway's Chicago Passenger Station.

“PNW” Circle Tours Leave Chicago as Follows:

TOUR PNW—1.....Sat., July 4	TOUR PNW—2.....Sat., July 18	TOUR PNW—3.....Sat., Aug. 1	TOUR PNW—4.....Sat., Aug. 15
--------------------------------	---------------------------------	--------------------------------	---------------------------------

Detailed Schedule

Lv. Chicago, Ill. .... 10:15 p.m. Sat.	C. & N. W. Ry.	Lv. Vancouver, B. C. .... 1:35 p.m. Sat.	Can. Nat'l. Ry.
Ar. Omaha, Nebr. .... 9:45 a.m. Sun.	"	Ar. Jasper Park, Alta. .... 8:35 a.m. Sun.	"
Lv. Omaha, Nebr. .... 10:05 a.m. Sun.	Un. Pac. Sys.	Headquarters—Jasper Park Lodge (room with bath).	
Lv. Cheyenne, Wyo. .... 8:40 p.m. Sun.	"	Automobile trip to Mt. Edith Cavell.	
Lv. Pocatello, Idaho .... 10:20 a.m. Mon.	"	Lv. Jasper Park, Alta. .... 9:50 a.m. Mon.	"
Ar. Portland, Oregon .... 7:45 a.m. Tue.	"	Ar. Edmonton, Alta. .... 4:45 p.m. Mon.	"
Breakfast at Multnomah Hotel.		Dinner at MacDonald Hotel—Sightseeing tour of Edmonton.	
Columbia River Highway Trip by automobile—Luncheon at Simmons'-by-the-Falls.		Lv. Edmonton, Alta. .... 10:00 p.m. Mon.	Can. Nat'l. Ry.
Lv. Portland, Oregon .... 4:30 p.m. Tue.	Gt. Nor. Ry.	Ar. Calgary, Alta. .... 6:45 a.m. Tue.	"
Ar. Tacoma, Wash. .... 8:15 p.m. Tue.	"	Breakfast at Palliser Hotel.	
Headquarters—Tacoma Hotel (room with bath).		Lv. Calgary, Alta. .... 9:30 a.m. Tue.	Automobile
Lv. Tacoma, Wash. .... 8:30 a.m. Wed.	Automobile	Ar. Banff Springs. .... 1:00 p.m. Tue.	"
Ar. Paradise Inn. .... 11:50 a.m. Wed.	"	Sightseeing tour of Banff.	
Headquarters—Paradise Inn (room with bath).	"	Lv. Banff Springs. .... 4:00 p.m. Tue.	"
Lv. Paradise Inn. .... 8:30 a.m. Thu.	"	Ar. Chateau Lake Louise. .... 6:30 p.m. Tue.	"
Ar. Seattle, Wash. .... 11:50 a.m. Thu.	"	Headquarters—Chateau Lake Louise (room with bath).	
Headquarters—Olympic Hotel (room with bath).		Lv. Chateau Lake Louise. .... 10:00 a.m. Wed.	"
City sightseeing trip.		Ar. Banff Springs Hotel. .... 11:58 a.m. Wed.	"
Lv. Seattle, Wash. .... 9:00 a.m. Fri.	Can. Pac. SS.	Lv. Banff Springs Hotel. .... 2:00 p.m. Wed.	"
Luncheon on steamer.		Ar. Calgary, Alta. .... 5:30 p.m. Wed.	Automobile
Ar. Victoria, B. C. .... 12:45 p.m. Fri.	"	Lv. Calgary, Alta. .... 6:40 p.m. Wed.	Can. Nat'l. Ry.
Sightseeing tour of Victoria.		Ar. Saskatoon. .... 11:00 a.m. Thu.	"
Lv. Victoria, B. C. .... 6:00 p.m. Fri.	Can. Nat'l. SS.	Lv. Saskatoon. .... 12:00 N Thu.	"
Dinner on Steamer.		Ar. Winnipeg, Man. .... 8:10 a.m. Fri.	"
Ar. Vancouver, B. C. .... 9:45 p.m. Fri.	"	Sightseeing tour of Winnipeg.	
Headquarters—Georgia Hotel (room with bath).		Lv. Winnipeg, Man. .... 9:15 a.m. Fri.	"
City sightseeing trip Saturday morning.		Ar. Duluth, Minn. .... 8:45 p.m. Fri.	"
		Lv. Duluth, Minn. .... 9:00 p.m. Fri.	C. & N. W. Ry.
		Ar. Chicago, Ill. .... 11:35 a.m. Sat.	"

Cost of Complete Tour \$650		
FROM CHICAGO, RETURNING TO CHICAGO		
Two persons occupying a lower berth, each.....	With Rail Ticket	Without Rail Ticket
One person occupying a lower berth.....	\$242.96	\$152.66
One person occupying an upper berth.....	266.96	176.66
Two persons occupying a compartment, each.....	257.35	167.05
Two persons occupying a drawing room, each.....	286.70	196.40
Three persons occupying a drawing room, each.....	303.95	213.65
	275.62	185.32
Additional compartment and drawing room rates, also rates for incomplete tour on application.		
The rates shown above are based on double rooms with bath at all hotels. Single rooms with bath at all hotels will be assigned passengers booking alone. Additional cost \$8.25.		





Natural Color Photograph



Natural Color Photograph

ALONG THE BEACH  
AT SANTA MONICA

## SIXTEEN DAY "C" CIRCLE TOUR

California—Old Mexico—Yosemite National Park

California . . . where Spanish cavaliers, dreaming of the blue skies of sunny Spain, found their dreams realized . . . where patient padres toiled to claim the land for God, leaving as their mark old Spanish missions whose cloistered courts still welcome the traveler.

Small wonder that the name of California has the power to stir the blood of present day adventurers!

Sapphire skies . . . the blue Pacific . . . snow-capped mountain peaks—all bathed in the warm glow of the Southern sun.

Long sweeps of sandy beach, bordered by inviting, palm-lined boulevards . . . shady, winding paths through forests of majestic redwoods, past waterfalls, into deep canyons.

Los Angeles . . . forty years ago a small town, now the largest city on the western half of the continent. San Francisco . . . one of the most cosmopolitan cities in America. Hollywood . . . capital of America's movieland . . . dozens of beach and mountain towns and resorts.

This is a bird's eye view of California. To say that we can see *all* of California in a few short weeks would be absurd—but you can very easily get a bird's eye view, and more, of the innumerable magnetic charms of this second largest state in the Union on an Overland Route "C" Circle Tour this summer.

Los Angeles, the "City of Angels," is worth a bookful of description by itself. In many ways it is one of the most amazing cities in America. Its growth from a small town to a city of over a million and a quarter population in forty years, has been mentioned elsewhere. It is a city where, seemingly, nothing is impossible. The more you study it the more you share the Californian's enthusiasm for his state.

The streets and boulevards of Los Angeles are thronged with fast-moving





traffic—for California has a very high percentage of automobile ownership. Its harbor teems with the shipping of nearly every nation.

The beauty of Los Angeles is strikingly exotic. Its boulevards, and those of its suburbs, lead past miles of Spanish-type bungalows, their bright-colored roofs sharply contrasted against the blue California sky, their lawns a shade more green than others, and bordered with luxurious plant life that the semi-tropical climate provides. Acres of orange and walnut groves compete for your attention with the gaunt derricks of the oil fields.

To the west of the city, almost a part of it, are the beach cities. To California belongs the distinction of having the longest ocean coast line of any state in the United States. Small wonder, then, that its beaches are famous the world over . . . that its ports and harbors are among the most important and well known on the Pacific.

Out beyond Los Angeles' beach cities rises Santa Catalina Island, to which deep-sea anglers come from the world over to do battle with big game fish that inhabit its waters—tuna, albacore, seabass, yellowtail and swordfish.

Down the coast to the south—numerous picturesque oceanside towns . . . fashionable La Jolla . . . San Diego.

San Diego, with its superb natural harbor, is "a city built around a park." On North Island, at the harbor entrance, the Government maintains army and navy air stations because perfect flying conditions prevail here the year 'round. The harbor is also a destroyer base and frequent host to the Pacific fleet.

A few miles below San Diego—the Mexican border . . . Tiajuana . . . Agua Caliente—brilliant, gay, the "Deauville of America."

Riverside, in the heart of a region of rich citrus groves, boasts broad avenues shaded with eucalyptus and feathery pepper trees. Riverside's fame, too is partly because of its romantic and splendid Glenwood Mission Inn.

At Santa Barbara is perhaps the best known of the historic Spanish missions, situated, of course, on what is undoubtedly the world's most famous highway—El Camino Real. From San Diego to San Francisco, El Camino Real—the King's Highway—marks the route followed by the Spanish monks when they founded the great chain of missions along California's coast. A number of them are still in use. Many of them are in ruins. But, they all help today to give much of the color of the old romantic California to the new California. Yosemite, the beautiful—another of the West's wonderlands—where the enthusiast for scenery loses his power of expression. The Valley—lovely, green, pine-needle carpeted, is watched over by majestic granite domes, fringed by feathery waterfalls and stupendous cataracts. Magnificent Half-Dome . . . El Capitan, a Cyclopean buttress of polished granite, towering 3604 feet above the floor of the valley . . . gorgeous Glacier Point with its "Balanced Rock."

To the south of the valley—Mariposa Grove of Big Trees—Nature's most unusual show of living wonders . . . the world's oldest, tallest trees.

And, San Francisco . . . the largest city of northern California . . . one of the most beloved cities in the United States among those who travel.

San Francisco and New Orleans have sometimes been called the most cosmopolitan cities in the United States. It is not difficult to see why San Francisco should be given this title.





Natural Color Photograph

AVALON BAY AT  
SANTA CATALINA ISLAND

Its great harbor brings to its streets the people of every nation. Sailors from Greece rub elbows with those from Norway on the streets of San Francisco's waterfront. The placid Hollander is found at the tables of the same cafe with the excitable Spaniard.

One of the most vivid memories of San Francisco that is carried away by the visitor, is that of its Chinatown, an entire large district whose teeming population is Chinese, whose atmosphere is distinctly of the Orient.

The greatness of Rome is somehow associated—whether correctly or not—with the fact that it was built on seven hills. How much greater, then, should San Francisco be, standing on fourteen hills?

Its location is one of San Francisco's chief charms. From Nob Hill, from Telegraph Hill, from Buena Vista or from almost any of its eminences, you can look down upon the glories of San Francisco, of the Bay, of the cities across the water; all spread out before you.

Across the Bay to the north is lofty, dignified Mt. Tamalpais, with the redwoods of Muir Woods in a valley between. Eastward, beyond another arm of the Bay, are Oakland and its thriving industries; Berkeley, the white campanile of the university dominating the campus; Alameda, a charming residential town.

Visit California this summer. Go quickly, comfortably, without a care, on an Overland Route "C" Circle Tour. You'll be surprised at how effectively you can "do" California—within the average two weeks' vacation period—and how inexpensive it really is.







A TYPICAL STREET SCENE IN SAN FRANCISCO'S CHINATOWN



RIVERSIDE'S FAMOUS PALM-STUDED VICTORIA AVENUE

## Something Different Every Day

**SATURDAY**—The train selected for your trip across the country to California is the luxurious Los Angeles Limited, which provides every feature of extra fare service, yet, at no extra-fare. Barber, maid, valet, bath. You leave Chicago in the evening via the Chicago & North Western Railway, using this pioneer western road as far as Omaha.

**SUNDAY**—A brief pause at Omaha and then straight west via the Union Pacific System's superlative roadbed, following the shortest, most direct and scenic route to the Pacific Coast.

**MONDAY**—In the morning you will enjoy beautiful Weber Canyon through which you pass before entering Ogden. A brief stop in Ogden, and in Salt Lake, then skirting the shores of Great Salt Lake, your splendid train speeds across the great open spaces that separate the Wasatch Mountains of Utah from the Pacific Coast Ranges.

**TUESDAY**—During breakfast on the train, you get your first vista of California's palm-studded boulevards, vast citrus fruit groves and mountain backgrounds—their heights possibly just peeking out from behind the early morning

mist as Old Sol, whose rays are brightest in California, follows his course higher into the heavens. Then, Los Angeles and after "moving in" at the Hotel Alexandria (room with bath), you motor away for a visit to Glendale . . . to Hollywood . . . to Beverly Hills . . . and the beach cities—Santa Monica, Ocean Park, Venice, Hermosa, Redondo. Luncheon is enjoyed at the Universal Cafe, in Hollywood, after which you visit one of the "movie lots" to see how "talkies" are made.

**WEDNESDAY**—An ocean trip to Santa Catalina, with its bustling town of Avalon clutching the steep slopes of the island. Luncheon at the Hotel St. Catherine . . . a trip over the beautiful submarine gardens in a glass bottom boat . . . then back across the Pacific's lane to Los Angeles Harbor and to your hotel for dinner.

**THURSDAY**—A day of rest . . . go as you please.

**FRIDAY**—In the morning, en route to San Diego by parlor car motor bus, you stop at seaside Long Beach, then continue on along the scenic coast highway, past the famed, rare Torrey Pines, through lovely LaJolla, arriving San

Diego to "check in" at the San Diego Hotel before the drive across the border into Old Mexico. Through Tiajuana and then—Agua Caliente . . . exotic, elegant, different.

**SATURDAY**—Away again after breakfast, by motor bus, through tropical Balboa Park . . . to Point Loma with its Marine Barracks, Naval Training Station, Flying Fields. From San Diego, north again over an excellent highway through expansive olive orchards, the Temecula Valley, past Lake Elsinore and the University of California Citrus Fruit Experimental Farm, and into Riverside for dinner and overnight at the romantic Glenwood Mission Inn. Room with bath.

**SUNDAY**—Leaving Riverside in the morning, the trip by motor to Pasadena takes you over typical, colorful California countrysides. Luncheon at the Maryland Hotel in Pasadena and then, again by motor to Santa Barbara for dinner and a pleasant overnight stay at El Mirasol Hotel.

**MONDAY**—A delightful drive about the city, visiting Santa Barbara Mission and the aristocratic suburban estates with their gorgeous gardens, returning to El Mirasol for luncheon. Then, by motor to Los Angeles and, after dinner, you board the train for an overnight ride to Yosemite National Park.

**TUESDAY**—Arriving Merced you continue on via the Yosemite Valley Railroad to El Portal where roomy motor buses await your arrival to carry you to Curry Lodge—your Park headquarters. In the afternoon a trip around the valley floor by bus unfolds the resplendent region in all its loveliness . . . El Capitan, Yosemite Falls, Sentinel Rock, Mirror Lake, Happy Isles. Dancing and entertainment enliven the evening hours, the feature of which is the unique "Fire Fall" from Glacier Point.

**WEDNESDAY**—An all-day drive to the Mariposa Grove of Big Trees and return. Your automobile makes a complete tour of the grove, going through Wawona (Tunnel Tree), the most noted of them all. Luncheon at Wawona Hotel. Dinner at Curry Lodge from where you leave at 9:00 P. M. for an overnight trip to Oakland—by train from El Portal.

**THURSDAY**—Arrive Oakland for breakfast at the Oakland Hotel. Again, an interest-crowded day's drive in-

cluding, in the morning, a trip around Oakland, Piedmont, Berkeley, and its University of California Campus, then through rolling hills to Carquinez Straits, across to Vallejo for an inspection of the Mare Island Navy Yard, to the Hotel Casa de Vallejo for luncheon. In the afternoon, your route is through the Valley of the Moon country (made famous by Jack London's stories) and to Sonoma, the home of the old mission farthest north on El Camino Real. Back through Petaluma, San Rafael and past San Quentin prison to Sausalito, where the bus is ferried across the bay to San Francisco and delivers you to the Clift Hotel, your "home" for the night.

**FRIDAY**—"Sleep in" if you wish, or spend the morning as you choose. After luncheon—a thirty-mile drive includes business and residential San Francisco, Civic Center, Twin Peaks, Golden Gate Park, Cliff House, the Presidio, Mission Dolores, and terminates at the Ferry Building, where you board an Oakland-bound ferry to your train for the start of your trip "back east." Dinner in the dining car as you leave Oakland.

**SATURDAY AND SUNDAY**—En route east on the San Francisco Limited, finest and fastest non-extra-fare train between San Francisco and Chicago. Via the Overland Route, of course—direct, scenic. Greatest single feature of the train trip?—"Going to sea by rail" across Great Salt Lake, entering Ogden.

**MONDAY**—Arrive Chicago after breakfast, in ample time to make eastern connections.



AT BRILLIANT AGUA CALIENTE, "THE DEAUVILLE OF AMERICA"





Natural Color Photograph

## If Time Permits—Hawaii

In connection with our all-expense California tours operated during the summer season all inclusive tours to Hawaii have been arranged. These are most ideal trips, combining rail and water travel, and for which the finest of Trans-Pacific steamers will be used.

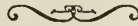
Hawaii, an integral part of the United States, of which it is the all important western outpost, is a magnificent semi-tropical territory comprising four main islands and four of lesser importance, with a total population of about 325,000 people representing over thirty different races or race combinations.

A vivid, wistful land, swathed in a cloak of semi-tropic coloring of flowers and foliage, yet perpetually fanned by

gentle trade winds which give a spring-like climate the year round, the islands offer a rich panorama of ever-changing vistas.

Here, if anywhere in the modern world, is that Earthly Paradise for which mankind has sought through countless generations. Every comfort and convenience of the American mainland is available. In contrast, however, the visitor will find on every hand the picturesque romantic life of old Hawaii and the more astounding contrasts of the island inhabitants, gathered into a gigantic melting pot where East meets West and blends in life, customs, and thought.

Ask for complete information regarding these all inclusive tours to Hawaii.



### "C" Circle Tours Leave Chicago as Follows:

TOUR		TOUR		TOUR		TOUR	
C-1	Sat., June 20	C-3	Sat., July 18	C-4	Sat., Aug. 1	C-5	Sat., Aug. 15
C-2	Sat., July 4						

### Detailed Schedule

Lv. Chicago, Ill.	9:30 p.m.	Sat.	C. & N. W. Ry.	Lv. El Portal, Calif.	10:45 a.m.	Tue.	Automobile
Ar. Omaha, Nebr.	9:35 a.m.	Sun.	"	Ar. Yosemite Valley	11:30 p.m.	Tue.	"
Lv. Omaha, Nebr.	10:07 a.m.	Sun.	Un. Pac. Sys.	Headquarters—Curry Lodge.			
Ar. Salt Lake City, Utah	10:35 a.m.	Mon.	"	Tuesday—Floor of the Valley Trip.			
Lv. Salt Lake City, Utah	11:00 a.m.	Mon.	"	Lv. Yosemite Valley	8:30 a.m.	Wed.	Automobile
Lv. Lund, Utah	5:34 p.m.	Mon.	"	Ar. Mariposa Grove	10:50 a.m.	Wed.	"
NOTE: Tours arranged to connect at Lund with "ZRG" Tours.				Lv. Mariposa Grove	11:50 a.m.	Wed.	"
Ar. Los Angeles, Calif.	8:30 a.m.	Tue.	Un. Pac. Sys.	Ar. Wawona	12:30 p.m.	Wed.	"
Headquarters—Alexandria Hotel (room with bath).				Luncheon—Wawona Hotel.			
Tuesday—Trip to Hollywood-Beverly Hills-Beaches.				Lv. Wawona	2:00 p.m.	Wed.	"
Wednesday—Trip to Catalina Island.				Ar. Yosemite Valley	4:00 p.m.	Wed.	"
Thursday—Day of Rest.				Lv. Yosemite Valley	9:00 p.m.	Wed.	"
Lv. Los Angeles, Calif.	8:00 a.m.	Fri.	Automobile	Ar. El Portal, Calif.	9:40 p.m.	Wed.	"
Ar. San Diego, Calif.	12:15 p.m.	Fri.	"	Lv. El Portal, Calif.	9:45 p.m.	Wed.	Y. V. R. R.
Headquarters—San Diego Hotel (room with bath).				Ar. Merced, Calif.	1:45 a.m.	Thu.	"
Friday—Side trip to Tia Juana and Agua Caliente.				Lv. Merced, Calif.	2:10 a.m.	Thu.	Sou. Pac. Ry.
Saturday—Trip to Balboa Park and Point Loma.				Ar. Oakland, Calif.	7:43 a.m.	Thu.	"
Lv. San Diego, Calif.	1:00 p.m.	Sat.	"	Breakfast at Oakland Hotel.			
Ar. Riverside, Calif.	5:00 p.m.	Sat.	"	Lv. Oakland, Calif.	9:00 a.m.	Thu.	Automobile
Headquarters—Glenwood Mission Inn (room with bath).				Through Oakland-Berkeley-Piedmont and Mare Island Navy Yard.			
Lv. Riverside, Calif.	10:00 a.m.	Sun.	Automobile	Ar. Vallejo, Calif.	11:00 a.m.	Thu.	Automobile
Ar. Pasadena, Calif.	11:45 a.m.	Sun.	"	Headquarters—Casa de Vallejo Hotel.			
Lv. Pasadena, Calif.	1:30 p.m.	Sun.	"	Lv. Vallejo, Calif.	1:00 p.m.	Thu.	"
Ar. Santa Barbara, Calif.	5:30 p.m.	Sun.	"	Through Sonoma and the Valley of the Moon Country, passing San Quentin prison and through Sausalito.			
Headquarters—El Mirasol Hotel (room with bath).				Ar. San Francisco, Calif.	5:30 p.m.	Thu.	Automobile
Monday—Sightseeing tour of Santa Barbara and suburbs.				Headquarters—Clift Hotel (room with bath).			
Lv. Santa Barbara, Calif.	2:00 p.m.	Mon.	Automobile	Friday—Morning open: Afternoon, Thirty-mile drive.			
Ar. Los Angeles, Calif.	6:00 p.m.	Mon.	"	Lv. San Francisco, Calif.	6:00 p.m.	Fri.	Sou. Pac. Ry.
Lv. Los Angeles, Calif.	7:40 p.m.	Mon.	Sou. Pac. Sys.	Lv. Oakland, Calif.	6:36 p.m.	Fri.	"
Ar. Merced, Calif.	6:32 a.m.	Tue.	"	Ar. Ogden, Utah	5:20 p.m.	Sat.	"
Lv. Merced, Calif.	6:45 a.m.	Tue.	Y. V. R. R.	Lv. Ogden, Utah	6:40 p.m.	Sat.	Un. Pac. Sys.
Ar. El Portal, Calif.	10:30 a.m.	Tue.	"	Ar. Omaha, Nebr.	8:10 p.m.	Sun.	"
				Lv. Omaha, Nebr.	8:47 p.m.	Sun.	C. & N. W. Ry.
				Ar. Chicago, Ill.	9:15 a.m.	Mon.	"

### Cost of Complete Tour

#### FROM CHICAGO, RETURNING TO CHICAGO

	With Rail Ticket	Without Rail Ticket
Two persons occupying a lower berth, each	\$261.67	\$171.37
One person occupying a lower berth	289.42	199.12
One person occupying an upper berth	278.31	188.01
Two persons occupying a compartment, each	312.29	221.99
Two persons occupying a drawing room, each	332.91	242.61
Three persons occupying a drawing room, each	299.91	209.61

Additional compartment and drawing room rates, also rates for incomplete tour on application.

The rates shown above are based on double rooms with bath at all hotels. Single rooms with bath at all hotels will be assigned passengers booking alone. Additional cost \$8.00.





ALONG THE  
COLUMBIA RIVER  
VIA THE UNION PACIFIC

*Natural Color Photograph*

## TWENTY DAY "A" CIRCLE TOURS

Pacific Northwest—Alaska—Canadian Rockies

Alaska has been called "Our Last Frontier," yet it is a frontier which can be viewed from steamer decks, observation cars and automobiles.

In earlier years it was popularly believed to be an outpost of civilization; a frigid land of Eskimos and their igloos; Indians; trappers and their dog teams; polar bears. Today, Alaska is famed for scenic splendor—for its might and majesty. It is noted for its thriving industries—mining, fishing, lumbering and for its delightful summer weather. Years ago, the trek to the Northland meant weeks of trying travel—discomfort, hardship and risk. Today, an Alaskan trip is made in comfort.

"Overland Route" Circle Tours to Alaska offer you mile upon mile of fast, comfortable, luxurious and restful train travel, traversing intensely interesting regions rich in colorful panoramas . . . pleasure-packed days midst the charming features of the famed Pacific Northwest . . . intimate glimpses of Canada's thriving West Coast cities . . . a glorious voyage through one of the most spectacular steamship lanes on the globe—the Inside Passage.

It would seem as though Nature had prepared a way to Alaska so that those who traveled there could do so pleasantly, comfortably, sublimely. The calm, placid waters of the Inside Passage, like an inland sea, are protected from the ocean's turbulence by thousands of islands that dot the coast line all the way





Natural Color Photograph

"SURROUNDED WITH  
EVERY TRAVEL LUXURY"

from Seattle to Skagway. Lining this unusual water boulevard on both sides are forest-covered and snow-topped mountain ranges whose sublimity is doubly beautiful, being mirrored in perfect likeness in the silvery surface of the water.

Probably the most unusual single feature of your course to Skagway is Taku Glacier. Your ship coasts slowly by this spectacle to allow a lingering view of its impressive magnitude. Three hundred miles of ice, fronting the water in a mile-wide palisade that dwarfs your ship to insignificance—jade green and blue, apparently as still as death, yet actually in motion, it carries the imprisoned snows of some far field in gleaming, tumbled ice blocks to the sea. To Skagway in the mad days, came adventurers and men of unattractive prospects, gamblers, crooks, confidence men, the riff-raff of the earth. Today, Skagway is alive with tales of the "old days" and your every minute will be filled with interest at the relics of riotous days and first-hand stories of "way back when."

After Alaska . . . after the luxuriously restful cruise returning to Prince Rupert—then, a joyous trip by train, through the very heart of gorgeous, massive mountain fastnesses . . . a delightful day in Jasper National Park . . . a pleasant trip across mammoth Canadian wheat fields . . . through the Minnesota Arrowhead Country and Duluth—to Chicago.

Many modern treasure hunters—scenic treasure hunters, will make the comfortable "trek" to Alaska this summer. Enjoy their charming company on an Overland Route "A" Circle Tour.





# Each Day—New Sight, New Thrills

**SUNDAY**—Leaving Chicago in the late evening, you are surrounded with every travel luxury on one of the nation's most exquisite trains—the "Portland Rose." Chicago & North Western Railway speeds you over the first lap of your trip to Omaha.

**MONDAY—TUESDAY**—From Omaha west, Union Pacific System assures your complete comfort over its "finest roadbed in the nation." Delicious dining car "meals that appeal" are served you all the way.

**WEDNESDAY**—Arrive Portland in the early morning proceeding to the Multnomah Hotel for breakfast. At 9:00 A. M. you board automobiles for the "Columbia River Highway" drive, passing Latourelle, Wahkeena, Multnomah and Horsetail Falls, stopping at Shepperd's Dell, the Fish Hatchery at Bonneville and Cascade Locks.



THE S.S. "PRINCE RUPERT" SLIPS QUIETLY THROUGH THE INSIDE PASSAGE

Luncheon is served at Simmon's-By-the-Falls. You return to Portland in time to leave on a late afternoon train for Tacoma—taking dinner on the train. Overnight at the Hotel Tacoma—room with bath of course, as at all hotels where this party spends the night.

**THURSDAY**—Leaving Tacoma at 8:30 A.M. by motor you arrive at Paradise Inn in Rainier National Park, before luncheon. The afternoon, as well as the next day is yours to enjoy the innumerable activities which this tremendous playground offers.

**FRIDAY**—At Rainier National Park. You may hike, ride, climb, participate in the novel thrills of nature coasting—enjoy the delicate beauty of flower-carpeted Paradise Valley—explore the jewel-like ice caves, the gleaming glaciers with their precipitous slopes and great crevasses.

**SATURDAY**—Leave Paradise Inn at 8:30 A.M. and motor through virgin stands of towering trees, over excellent highways, to Seattle, arriving at the Olympic Hotel for luncheon and dinner.

In the afternoon, a comfortable drive acquaints you with the charm of this prosperous city. You visit its many parks, the campus of the University of Washington, Lake Washington, the Ship Canal and the Harbor.

Late in the evening you make yourself at home in a comfortable cabin on a Canadian National Steamship and, shortly after midnight, steam out of Seattle's harbor for the first taste of salt water cruising on the trip.

**SUNDAY**—All day in Victoria, British Columbia's capital city, with its decidedly English atmosphere, buildings and unusual gardens. Around the city by motor, during the day . . . luncheon at the splendid Empress Hotel. Ships from the seven seas flank you as you steam quietly on to Vancouver for overnight at the Georgia Hotel. Room with bath.

**MONDAY**—In the morning, a delightful drive takes you through Stanley Park, one of the largest natural parks in the world, and famous for its majestic groves of mammoth fir. You visit the Shakespearean Gardens and inspect historic totems. The afternoon and early evening are left open. "All ashore, 'at's goin' ashore," at 10:00 P.M. and you slip away from your moorings amidst a shower of confetti, a blaze of music and a bedlam of "bon voyages."

**TUESDAY**—For the next three days, your steamer glides through a world of blue waters, green shores and mistily blue mountains—a veritable dream ship in a dream world, calling at Powell River and Ocean Falls.

**WEDNESDAY**—Deck sports of all sorts, dancing every evening, impromptu programs, all add zest to your hours on shipboard. You call at fascinating British Columbian and Alaskan ports—Prince Rupert and Ketchikan. Each has its own fascinating features, each its peculiar romantic history. While in Prince Rupert automobile sight-seeing tour will



JASPER PARK LODGE HAS AN AIR OF DIGNIFIED INFORMALITY

be made to the various points of interest, including a visit to the largest salmon cold storage plant in the world.

**THURSDAY**—Just before you come upon Juneau, you pass at close range the most massive of glaciers to be seen on the entire trip—Taku Glacier.

Juneau, guarded by Mounts Robert and Juneau, is visited before you start into the Lynn Canal—the glorious home stretch to Skagway. Juneau is a fishing center and the home of quartz mining on a large scale. Its curio shops, like those in the other interesting places which you visit, sell miniature totems, nuggets, furs, Chilcot Indian blankets, ivories, baskets, walrus teeth and other little knickknacks by the score, which will recall to you in after years—Alaska.

**FRIDAY**—Arriving at Skagway, "The Flower City" of the Northland, you prepare for a thrilling two-day trip into the interior. After breakfasting on the boat, you leave via the White Pass and Yukon Route for Carcross, over some of the most unique miles of railroad right-of-way in the world. At Carcross, you board the steamer "Tutshi"

for a cruise through the heart of the mountains to "Ben-My-Chree," a gracious little settlement. The cordial welcome, the stirring reception accorded visitors to this haven of happiness, is an experience which you will long remember. Retracing your course overnight, you arrive at Carcross in the early morning.

**SATURDAY**—Upon arriving at Carcross, you entrain for Skagway, stopping en route at Bennett for luncheon. Bennett is situated at the head of beautiful Lake Bennett and is the point where those who came over the Chilkoot and White Pass trails built their rafts and small boats to continue their journey into the Klondike. You arrive at Skagway at 4:30 P.M. with time to visit the attractions of the city before dining on the steamer and embarking in the early evening for Prince Rupert.

**SUNDAY**—Again en route through the Inside Passage, you have the feeling of being "back home" as you take up your routine aboard ship, where you left off when you disembarked at Skagway.

**MONDAY**—Arriving Prince Rupert in the morning, you reluctantly leave your steamer cabin. However, you are soon comfortably settled on the Canadian National Railway's "Continental Limited," for the first lap of your eastbound journey.

**TUESDAY**—All day long you traverse territory whose lovely landscapes evoke "Ohs" and "Ahs" from the most traveled people. At Jasper National Park station, automobiles await your arrival to speed you to Jasper Park Lodge.

**WEDNESDAY**—Mountains completely encircle the Lodge—mountains whose excellent trails and motorways invite your inspection during the morning, which is left open for you to do as you will. In the afternoon, a motor trip takes you over thirty-six miles of mountain roadway on which you visit Ghost Glacier at the base of lovely Mount Edith Cavell. At 10:30 P.M. you depart for Winnipeg, Duluth and home.

**THURSDAY**—Across Canada's vast acres of world-renowned wheat lands, pausing at her energetic cities of thriving industry, your entire day is crowded with interest in an intimate picture of how your Canadian neighbors live.

**FRIDAY**—A brief stop at Winnipeg in the morning—at Duluth in the evening and you start on the "last lap" of your homeward journey.

**SATURDAY**—About to bid farewell to your fellow travelers, you are impressed most forcibly with the charming companionship which has added infinitely to the joys of your care-free days of vacation pleasure. Just before noon you arrive in Chicago, the possessor of a wealth of mental treasures which will remain with you always.

**"A" Circle Tours Leave Chicago as Follows:**

TOUR  
A—1 .....Sun., June 28

TOUR  
A—2 .....Sun., July 19

TOUR  
A—3 .....Sun., Aug. 9

**Detailed Schedule**

Lv. Chicago, Ill. ....	10:15 p.m.	Sun.	C. & N. W. Ry.	Lv. Prince Rupert .....	3:00 p.m.	Wed.	Can. Nat'l. SS.
Ar. Omaha, Nebr. ....	9:45 a.m.	Mon.	"	Ar. Skagway (Alaska Time) .....	8:00 a.m.	Fri.	"
Lv. Omaha, Nebr. ....	10:05 a.m.	Mon.	Un. Pac. Sys.	Lv. Skagway (Alaska Time) .....	8:30 a.m.	Fri.	W. P. & Y. Ry.
Lv. Cheyenne, Wyo. ....	8:40 p.m.	Mon.	"	Ar. Carcross, Y. T. ....	11:59 a.m.	Fri.	"
Lv. Pocatello, Idaho. ....	10:20 a.m.	Tue.	"	Lv. Carcross, Y. T. ....	1:00 p.m.	Fri.	W. P. & Y. SS.
Ar. Portland, Oregon. ....	7:45 a.m.	Wed.	"	Ar. West Taku Arm. ....	7:00 p.m.	Fri.	"
Breakfast at Multnomah Hotel. Columbia River Highway Trip.				Lv. West Taku Arm. ....	3:00 a.m.	Sat.	"
Luncheon—Simons'-by-the-Falls.				Ar. Carcross, Y. T. ....	9:00 a.m.	Sat.	"
Lv. Portland, Oregon. ....	4:30 p.m.	Wed.	Gt. Nor. Ry.	Lv. Carcross, Y. T. ....	11:50 a.m.	Sat.	W. P. & Y. Ry.
Ar. Tacoma, Wash. ....	8:15 p.m.	Wed.	"	Ar. Skagway (Alaska Time) .....	4:30 p.m.	Sat.	"
Headquarters—Tacoma Hotel (room with bath).				Lv. Skagway (Alaska Time) .....	6:00 p.m.	Sat.	Ca. Nat'l. SS. Co.
Lv. Tacoma, Wash. ....	8:30 a.m.	Thu.	Automobile	Ar. Prince Rupert, B. C. ....	7:00 a.m.	Mon.	"
Ar. Paradise Inn. ....	11:50 a.m.	Thu.	"	Lv. Prince Rupert, B. C. ....	12:30 p.m.	Mon.	Can. Nat'l. Ry.
Headquarters—Paradise Inn (room with bath).				Ar. Jasper Park, Alta. ....	8:10 p.m.	Tue.	"
Lv. Paradise Inn. ....	8:30 a.m.	Sat.	"	Headquarters—Jasper Park Lodge (room with bath).			
Ar. Seattle, Wash. ....	11:50 a.m.	Sat.	"	Automobile trip to Mt. Edith Cavell.			
Headquarters—Olympic Hotel.				Lv. Jasper Park, Alta. ....	10:30 p.m.	Wed.	"
City sightseeing trip.				Ar. Edmonton, Alta. ....	7:20 a.m.	Thu.	"
Lv. Seattle, Wash. ....	1:00 a.m.	Sun.	Can. Nat'l. SS.	Passengers desiring to make side trip to Banff and Lake Louise will leave party at Edmonton and travel independently.			
Stateroom and Breakfast on steamer.				Lv. Edmonton, Alta. ....	8:00 a.m.	Thu.	Can. Nat'l. Ry.
Ar. Victoria, B. C. ....	7:00 a.m.	Sun.	"	Ar. Winnipeg, Man. ....	8:40 a.m.	Fri.	"
Automobile sightseeing tour of Victoria.				Lv. Winnipeg, Man. ....	9:15 a.m.	Fri.	"
Luncheon at Empress Hotel.				Ar. Duluth, Minn. ....	8:45 p.m.	Fri.	"
Lv. Victoria, B. C. ....	6:00 p.m.	Sun.	"	Lv. Duluth, Minn. ....	9:00 p.m.	Fri.	C. & N. W. Ry.
Dinner on steamer.				Ar. Chicago, Ill. ....	11:35 a.m.	Sat.	"
Ar. Vancouver, B. C. ....	9:45 p.m.	Sun.	"				
Headquarters—Georgia Hotel (room with bath).							
City sightseeing trip.							
Lv. Vancouver, B. C. ....	10:00 p.m.	Mon.	"				
Ar. Prince Rupert. ....	11:30 a.m.	Wed.	"				
Sightseeing tour of Prince Rupert, including the largest salmon cold storage house in the world.							

**Cost of Complete Tour**

**FROM CHICAGO, RETURNING TO CHICAGO**

	With Rail Ticket	Without Rail Ticket
Two persons occupying a lower berth, each.....	\$344.56	\$254.26
One person occupying a lower berth.....	368.56	278.26
One person occupying an upper berth.....	358.95	268.65
Two persons occupying a compartment, each.....	388.30	298.00
Two persons occupying a drawing room, each.....	405.55	315.25
Three persons occupying a drawing room, each.....	377.22	286.92

Additional drawing room and compartment rates, also rates for incomplete tour on application.

The rates shown above are based on double rooms with bath at all hotels. Single rooms with bath at all hotels will be assigned passengers booking alone. Additional cost \$8.50.





Natural Color Photograph



Natural Color Photograph

"MEALS THAT APPEAL"  
ADD TO YOUR JOYS

## COLORADO

### "Where the West is Nearest"

Suppose you simply can't get away this summer for an extended trip West—the best you can possibly do is to "break away" for a week or so. No need to forego the supreme pleasure of just the kind of vacation you want—in the mountains . . . cool, invigorating, inspiring, different.

Run out to Colorado—where the West is nearest . . . where there is a bountiful supply of *all* the requisites for your "perfect vacation." Colorado, in the heart of the Rockies, where the mountains are only overnight from most of the United States.

In Colorado's mountains, which are criss-crossed by endless miles of highways, foot trails, saddle trails, you can relax . . . quiet your overwrought nerves and come back feeling "fit as a fiddle," even though your time is limited.

Go by train . . . save time . . . start your vacation where the scenery begins. Take the Chicago & North Western-Union Pacific and start your vacation when you board one of its fine trains to Colorado, the most famous of which is the Columbine, named in honor of Colorado's state flower.

Incomparable vacation days in the romantic Rockies for less than \$100.00. Let us show you how easily it can be done—let us plan for you.





# GENERAL INFORMATION

"Overland Route" Circle Tours offer you "The Best of the West," at the least possible cost and are planned with every care for your comfort, convenience and pleasure. An experienced escort accompanies the party at all times and relieves you of every travel detail. Go via the "Overland Route" and make the most of your vacation this summer.

## Tour Costs Are All-Inclusive

The all-expense cost of all "Overland Route" Circle Tours includes every necessary item of expense incident to the trip. There are no extras, except individual tips, which are considered purely personal.

## Rates for Children

Children under twelve years of age are entitled to half fare railroad transportation. Various other deductions are made in tour privileges and rates furnished on request.

## Women Traveling Alone

If a woman is hesitant about traveling alone, our escorted tours offer the opportunity to bridge this difficulty. Our escort will introduce her to other members of the party and insure her a pleasant trip without vexation or annoyance. Hundreds of women, as individuals, have thus taken advantage of our escorted tours.

## Dining Car Service

In our spacious dining cars excellent meals tastily prepared and served with a smile, comparable with the best metropolitan hotel standards, add pleasure to your trip. You are at liberty to select whatever you wish and simply sign the guest check.

## Hotels and Lodges

In Yellowstone you have the choice of two types of accommodations, the rustic lodges or the hotels. The rates via the hotels are based on minimum accommodations. Rooms with bath are usually available at an additional charge of \$2.00 to \$4.50 per day per person.

In the Utah-Arizona Parks the popular rustic cabins are used and rates are based on minimum accommodations. De Luxe Cabins with bath are available, if arranged in advance, at an additional charge of \$2.25 to \$6.00 per day per person.

In Rocky Mountain National Park rooms with bath are available at an additional charge of \$1.00 to \$2.00 per day per person.

In all National Parks, Hotels and Lodges are under the jurisdiction of the National Park Service, Department of the Interior, who require that all visitors to the Parks must be accommodated. Consequently, single rooms are not always available.

Rates quoted herein on Pacific Northwest "PNW," California "C," and Alaska "A" Tours, are based on double rooms with bath at all hotels. Single rooms at slightly higher rates will be assigned passengers travelling alone on these three tours. See pages 37-45-49 respectively for this additional charge.

## Personal Service

Representatives of the Department of Tours, The Chicago & North Western Railway and the Union Pacific System, each a travel expert, are prepared to assist you in every way—supplying detailed information, making reservations and booking passengers for the tours. If you desire, a representative will call to assist with your travel plans.

## Service by Correspondence

With an intelligent understanding of the problems confronting persons wishing to secure the greatest benefits of a Western vacation trip, the Department of Tours is prepared to tender a real service to those making inquiry by mail. You may feel free to write fully and ask any questions whatsoever in connection with any phase of western travel.

## Wearing Apparel

Warm summer days suggest summer lightweight clothing, yet the cool, invigorating nights in the mountains make medium weight wraps necessary—top coats, sweaters, weatherproof outer garments. Outing clothes; knickers, jackets, stout shoes or boots are a comfort. A pair of colored glasses will be invaluable.

## Baggage

Trunks are unnecessary. A suit case or bag will hold sufficient clothing for the entire trip and extra baggage will be a burden.

In the National Parks, the free allowance of baggage carried by the automobiles is one piece weighing twenty-five pounds. You may carry a small overnight bag with you, in addition to this.

The Department of Tours assumes no responsibility for baggage or personal effects, but in the event of damage, delay or loss, will do all in its reasonable power to lessen the hardship incurred. Our escort will furnish you, upon departure from Chicago, special baggage tags, bearing your name and address. These tags should be attached to all baggage.

### Mail and Telegrams

Mail and telegrams should be addressed to the various hotels shown in the itinerary. Specify, "Member of C. & N. W. Un. Pac. Overland Route Tour "Y-1," "Z-1," or whatever the particular designating letter and number may be.

### How to Join Our Tours

Persons desiring to join an "Overland Route" Circle Tour should send their names to be registered as early as possible, stating Pullman space required. Simply fill in the reservation blank on inside of back cover, being particular to supply all the information requested thereon. Reservations will then be made. Remittance should be made not later than ten days before departure of tour, but when this is inconvenient, we will upon request, hold reservations longer. Persons prevented from going may secure refund in full, provided reservations be cancelled before 1:00 p.m. on date of departure.

### Deposit Covering Reservations

Except in the case of Alaska Tours, no deposit is required. A deposit of \$25.00 per passenger is required by the steamship line on the Alaska Tours and this deposit should accompany request for space.

### Purchase Railroad Ticket at Your Home Station

Passengers coming from points other than Chicago may join our tours at Chicago or at any regular stopping point en route. To obtain full benefit of the low round-trip summer tourist railroad fare, railroad tickets should be purchased from home station, reading via the route of the tour, as shown below and on page 54.

### Note

Rates and train schedules quoted herein are subject to such change as tariff or operating requirements, which cannot be foreseen at time of issuance of this publication, may later demand.

## Ticket Agents Please Note

### Reservations

When you desire to make reservation for your patrons on one of our tours, you can handle direct with any representative of the Department of Tours, the Chicago & North Western Railway or the Union Pacific System, listed herein. In requesting reservation please give name in full of each passenger who will occupy space, street and city address of each; class of Pullman space desired. If your patron will make the entire trip with us it is just necessary to specify "Entire tour" otherwise specify date and place patron will join and leave party. For passengers making Yellowstone National Park specify whether they will use lodge or hotel accommodations.

An example reservation follows:

Please reserve one section on tour "C"-3 leaving Chicago, July 18th for

Mr. and Mrs. John Smith, 140 South Clark Street, Chicago (lower)

Miss Mary Smith, 152 North Dearborn Street, Chicago (upper)

They will leave party in San Francisco (before dinner) Friday, 13th day. Forward identification cards to me for delivery.

### Remittances Covering Tour Privileges

Remittance covering tour privileges, shown under column headed "Without Rail Ticket" for the various tours may be made by prepaid or exchange order drawn on Chicago and North Western Railway, Chicago, forwarding same to office through whom reservation is secured, at least ten days prior to departure of tour.

### Routing of Tickets

**"Y" CIRCLE TOUR:**—Destination West Yellowstone, Montana. Routing—any direct line to Chicago, thence C. & N. W. Ry. to Council Bluffs; Un. Pac. Sys. to West Yellowstone. Returning—Un. Pac. Sys. to Council Bluffs; C. & N. W. Ry. to Chicago, and any direct line to home station.

**"YRG" CIRCLE TOURS:**—Destination West Yellowstone, Montana. Routing—any direct line to Chicago, thence C. & N. W. Ry. to Council Bluffs; Un. Pac. Sys. to West Yellowstone. Returning—Un. Pac. Sys. to Odgen; D. & R. G. W. Ry. to Denver; Un. Pac. Sys. to Council Bluffs; C. & N. W. Ry. to Chicago, and any direct line to home station.



**"YR" CIRCLE TOUR:**—Destination West Yellowstone, Montana. Routing—any direct line to Chicago, thence C. & N. W. Ry. to Council Bluffs; Un. Pac. Sys. to West Yellowstone. Returning—Un. Pac. Sys. to Council Bluffs; C. & N. W. Ry. to Chicago, and any direct line to home station. Side trip coupons reading via D. & R. G. W. Ry., from Denver to Colorado Springs and return should be included by issuing agent in all tickets of passengers availing themselves of Colorado Springs extension.

**"YZ" CIRCLE TOUR:**—Destination West Yellowstone, Montana—Cedar City, Utah. Routing—any direct line to Chicago, thence C. & N. W. Ry. to Council Bluffs; Un. Pac. Sys. to West Yellowstone; Un. Pac. Sys. to Cedar City. Returning—Un. Pac. Sys. to Council Bluffs; C. & N. W. Ry. to Chicago, thence any direct line to home station.

**"Z" CIRCLE TOUR:**—Destination Cedar City, Utah. Routing—any direct line to Chicago, thence C. & N. W. Ry. to Council Bluffs; Un. Pac. Sys. to Cedar City. Returning—Un. Pac. Sys. to Council Bluffs; C. & N. W. Ry. to Chicago, thence any direct line to home station.

**"ZRG" CIRCLE TOUR:**—Destination Cedar City, Utah. Routing—any direct line to Chicago, thence C. & N. W. Ry. to Council Bluffs; Un. Pac. Sys. to Cedar City. Returning—Un. Pac. Sys. to Salt Lake City; D. & R. G. W. to Denver; Un. Pac. Sys. to Council Bluffs; C. & N. W. Ry. to Chicago, and any direct line to home station.

**"PNW" CIRCLE TOUR:**—Destination Victoria, B. C. Routing—any direct line to Chicago, thence C. & N. W. Ry. to Council Bluffs; Un. Pac. Sys. to Seattle; Can. Pac. SS. Co. to Victoria. Returning—Can. Nat'l SS. Co. to Vancouver; Can. Nat'l Ry. to Duluth; C. & N. W. Ry. to Chicago, thence any direct line to home station.

**"C" CIRCLE TOUR:**—Destination San Francisco, Calif. Routing—any direct line to Chicago, thence C. & N. W. Ry. to Council Bluffs; Un. Pac. Sys. to Los Angeles; Sou. Pac. Lines to San Francisco. Returning—Sou. Pac. Lines to Ogden; Un. Pac. Sys. to Council Bluffs; C. & N. W. Ry. to Chicago, thence any direct line to home station.

**"A" CIRCLE TOUR:**—Destination Seattle, Wash. Routing—any direct line to Chicago, thence C. & N. W. Ry. to Council Bluffs; Un. Pac. Sys. to Seattle. Returning—Can. Nat'l SS. Co. to Vancouver; Can. Nat'l Ry. to Duluth; C. & N. W. Ry. to Chicago, thence any direct line to home station.

Do not issue coupons covering tours of Yellowstone, Zion, Bryce, Grand Canyon, Rocky Mountain, Rainier or Yosemite National Parks; also, coupons covering side-trip Merced to Yosemite (El Portal), as these items are all included in tour privileges of the all-expense tour rate.

## DEPARTMENT OF TOURS

of the

### CHICAGO & NORTH WESTERN RY.—UNION PACIFIC SYSTEM

No other western railroad has employed for thirty-one years a staff of travel experts who spend their entire time in arranging attractive vacation tours that provide—

"THE BEST OF EVERYTHING"

ADDRESS ALL COMMUNICATIONS TO

J. L. BURGAR, Manager  
148 South Clark Street, Chicago, Ill.

### Department of Tours Representatives

Chicago, Ill. 148 S. Clark Street. Tel. Dearborn 2121

C. E. Burgess, Chicago Representative  
C. E. Frain, Traveling Agent  
I. D. Kessler, Traveling Agent

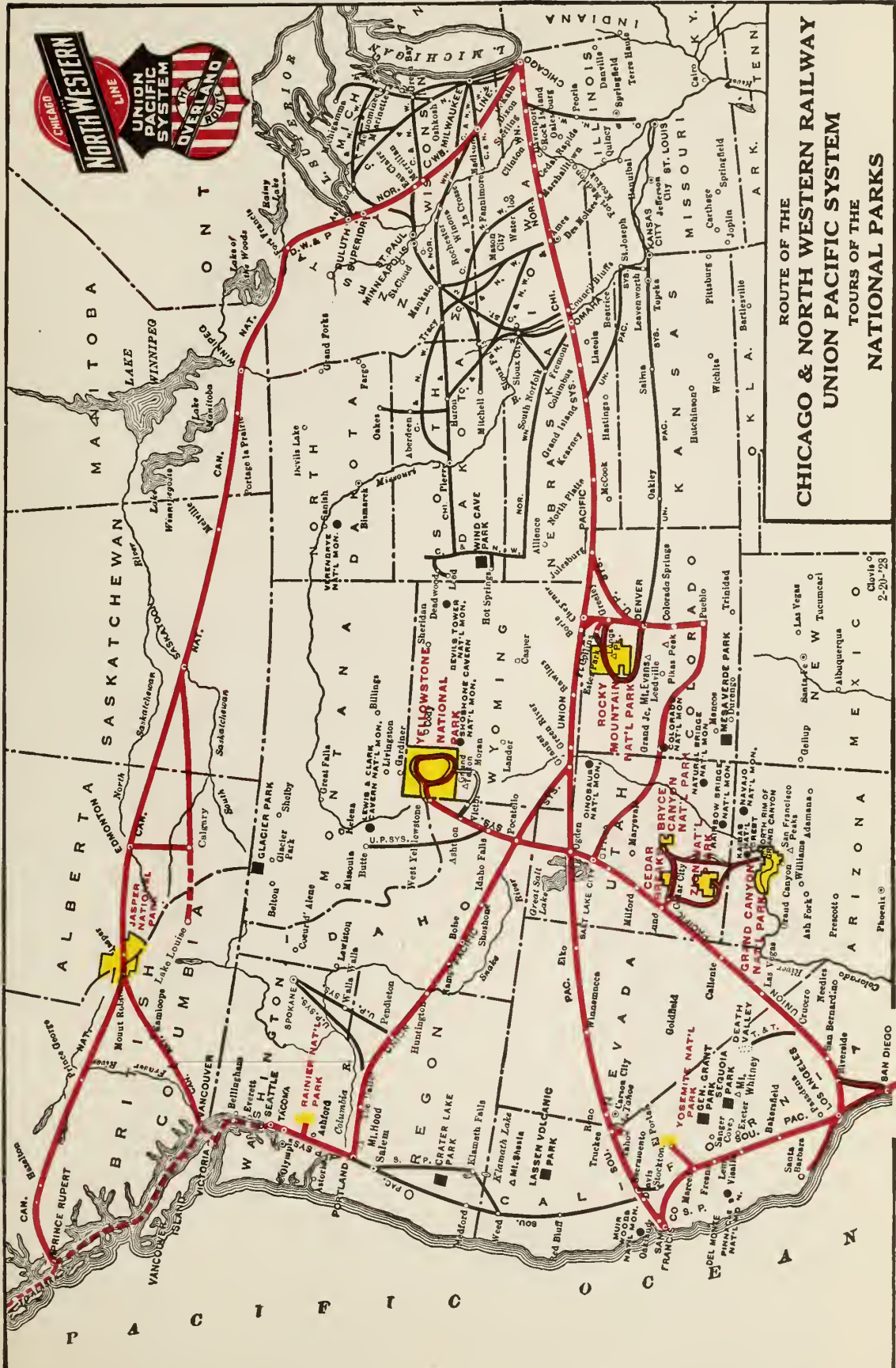
Harvey Buchholz, Traveling Agent  
C. M. Brown, Traveling Agent  
M. A. Light, City Passenger Agent

E. D. Poulson, City Passenger Agent

CINCINNATI, OHIO.....	202 Dixie Terminal Bldg.....	J. L. Bostick, Traveling Agent
CLEVELAND, OHIO.....	939 Union Trust Bldg.....	R. N. Anderson, Traveling Agent
DETROIT, MICH.....	619 Transportation Bldg.....	H. P. Dickson, Traveling Agent
INDIANAPOLIS, IND.....	308 Merchants Bank Bldg.....	Jos. Muller, Traveling Agent
LOS ANGELES, CALIF.....	732 South Broadway.....	V. J. Schmittroth, Calif. Representative
MILWAUKEE, WISC.....	231 East Wisconsin Ave.....	W. L. Kohn, Traveling Agent
PHILADELPHIA, PA.....	201 Franklin Trust Bldg.....	Thos. Clift, Traveling Agent
PITTSBURGH, PA.....	212 Oliver Bldg.....	A. J. Keating, Traveling Agent

### Tours and Tickets Everywhere

The functions of our Department are manifold. We prepare and furnish, without charge, schedules and routings for societies, clubs, fraternities and organizations who desire special-car or special-train trips to any part of the West. If you are planning to travel independently, or to organize a party, please call on any representative listed herein to assist you.



ROUTE OF THE  
**CHICAGO & NORTH WESTERN RAILWAY**  
**UNION PACIFIC SYSTEM**  
TOURS OF THE  
**NATIONAL PARKS**

Agua Caliente



# Ticket and Information Offices

## Chicago & North Western Line

ATLANTA, GA.—317 Healey Bldg.  
J. H. Schultz, General Agent.

BOSTON, MASS.—310 Old South Bldg.  
C. W. Gray, General Agent.

BUFFALO, N. Y.—202 Ellicott Sq.  
J. P. Fox, General Agent.  
C. B. Williams, Traveling Agent.  
A. R. Carlson, Traveling Agent.  
J. F. Swartout, City Agent.

CARROLL, IA.  
O. H. Romadka, Traveling Agent.

CHICAGO, ILL.—148 South Clark St.  
H. G. Van Winkle, Gen. Agent Pass. Dept.  
N. M. Kean, City Agent.  
E. E. Bogardus, City Agent.  
W. W. Pontious, City Agent.  
W. Evans, City Agent.  
R. H. Klank, City Agent.

CINCINNATI, O.—202 Dixie Terminal Bldg.  
G. L. Helmstadter, General Agent.  
A. M. Linz, Traveling Agent.  
J. T. Hall, Traveling Agent.  
L. A. Uvaas, Traveling Agent.  
E. A. Knauber, City Agent.

CLEVELAND, O.—939 Union Trust Bldg.  
H. E. Saumby, General Agent.  
S. L. Howells, Traveling Agent.  
R. C. Roberts, Traveling Agent.  
L. J. Jensen, City Agent.  
W. L. Foutts, City Agent.

DES MOINES, IA.—Chamberlain Hotel.  
W. F. Winkrantz, General Agent.  
C. A. Hagberg, City Agent.

DETROIT, MICH.—619 Transportation Bldg.  
R. H. Miller, General Agent.  
F. J. Herhusky, Traveling Agent.  
W. F. Schlicht, Traveling Agent.  
W. W. Creighton, Traveling Agent.  
G. A. Culbertson, Traveling Agent.  
H. F. Williams, City Agent.  
L. J. Bozman, City Agent.

DULUTH, MINN.—Spalding Hotel.  
J. D. Mahon, General Agent.

GREEN BAY, WIS.  
T. A. Carney, D. F. & P. A.

INDIANAPOLIS, IND.—308 Merchants Bank Bldg.  
V. A. Hampton, General Agent.  
G. H. Dumas, Traveling Agent.  
R. L. Dickson, Traveling Agent.  
S. M. Smith, City Agent.

MADISON, WIS.  
J. W. Vilas, D. F. & P. A.

MILWAUKEE, WIS.—231 E. Wisconsin Ave.  
E. P. Rueter, Gen. Agent Pass. Dept.  
Carl Carlsen, City Agent.  
F. E. Reuter, City Agent.

MINNEAPOLIS, MINN.—701 Marquette Ave.  
F. A. Brown, Gen. Pass. Agent.

NEW ORLEANS, LA.—1215 Hibernia Bank Bldg.  
C. S. Evenson, General Agent.

NEW YORK, N. Y.—475 Fifth Ave.  
F. G. Fitz-Patrick, General Agent.

PEORIA, ILL.—213 Jefferson Bldg.  
F. B. Martin, D. F. & P. A.  
H. Eklund, Traveling Agent.  
W. J. Kessler, City Agent.

PHILADELPHIA, PA.—201 Franklin Trust Bldg.  
C. N. Hale, General Agent.  
T. J. Coen, Traveling Agent.  
C. A. Miller, Traveling Agent.  
J. G. Thomas, Traveling Agent.  
C. E. Anderson, City Agent.

PITTSBURGH, PA.—212 Oliver Bldg.  
A. O. Olson, General Agent.  
E. W. Fiala, Traveling Agent.  
R. W. Phelps, Traveling Agent.  
E. A. Kempfer, City Agent.

ST. LOUIS, MO.—401 Boatmen's Bank Bldg.  
H. L. Hammill, General Agent.  
H. A. Hancock, Traveling Agent.  
E. C. Crow, Traveling Agent.  
D. C. Mead, City Agent.

ST. PAUL, MINN.—81 East 5th Street.  
G. H. Feyder, Ass't Gen. Pass. Agent.

SIoux CITY, IA.—522 Nebraska St.  
L. J. Nickelsen, General Agent.  
C. A. CAIRNS  
Passenger Traffic Manager Chicago, Ill.

A. R. GOULD  
Ass't Passenger Traffic Manager Chicago, Ill.

R. THOMPSON  
Assistant Passenger Traffic Manager Chicago, Ill.

M. R. LEAHY  
General Passenger Agent Chicago, Ill.

A. W. BOWER  
Assistant General Passenger Agent Chicago, Ill.

Chicago, St. Paul, Minneapolis & Omaha Ry.  
E. L. PARDEE  
Passenger Traffic Manager St. Paul, Minn.

W. L. MANSFIELD  
General Passenger Agent St. Paul, Minn.

## Union Pacific System

ATLANTA, GA.—1232 Healey Bldg.  
W. C. Elgin, General Agent.

BIRMINGHAM, ALA.—301 Protective Life Bldg.  
J. H. Doughty, General Agent.

BOSTON, MASS.—207-08 Old South Bldg.  
Willard Massey, General Agent.

CHICAGO, ILL.—6 South La Salle St.  
G. R. Lemmer, G. A. Passenger Dept.  
William Warner, City Passenger Agent.  
John C. Pollock, City Passenger Agent.  
E. E. Robertson, Traveling Passenger Agent.  
H. G. Larimer, Traveling Passenger Agent.  
W. W. Witte, City Ticket Agent.  
C. V. Wedell, Passenger Agent.

CINCINNATI, O.—705 Dixie Terminal Bldg.  
W. H. Connor, General Agent.  
J. Stanley Orr, District Passenger Agent.  
Wm. Hetherington, Traveling Passenger Agent.  
F. G. Busch, T. F. and Passenger Agent.  
J. R. Livsey, T. F. and Passenger Agent.  
W. A. Looney, City Passenger Agent.

CLEVELAND, O.—941 Union Trust Bldg.  
W. H. Benham, General Agent.  
R. E. Burt, Traveling Passenger Agent.  
Edwin H. Allen, T. F. and Passenger Agent.  
C. J. Stegeman, T. F. and Passenger Agent.  
A. G. Herbstler, City Passenger Agent.

DES MOINES, IA.—407 Equitable Bldg.  
Fred P. Stafford, General Agent.  
V. C. Kuhne, Traveling Passenger Agent.  
R. L. Henry, T. F. and Passenger Agent.

DETROIT, MICH.—508 Transportation Bldg.  
A. R. Malcolm, General Agent.  
L. G. Meder, City Passenger Agent.  
J. G. Howey, T. F. and Passenger Agent.  
W. W. Hott, Trav. Frt. & Passenger Agent.  
A. J. Eckerle, Passenger Agent.

KANSAS CITY, MO.—805 Walnut Street.  
Seth C. Rhodes, G. A. Passenger Dept.  
C. F. Hallsman, Traveling Passenger Agent.  
O. D. Crofut, Traveling Passenger Agent.  
E. M. Mattes, City Passenger Agent.  
G. B. Crippen, City Passenger Agent.

MILWAUKEE, WIS.—703 Straus Bldg.  
K. T. Mindemann, General Agent.  
G. J. Buckingham, Traveling Passenger Agent.  
C. C. Crouse, City Passenger Agent.

MINNEAPOLIS, MINN.—845 Northwestern Bank Bldg.  
E. H. Hawley, General Agent.  
A. J. Wintersteen, City Passenger Agent.

NEW ORLEANS, LA.—1001 New Orleans Bank Bldg.  
G. J. Garmon, General Agent.

NEW YORK, N. Y.—City Passenger Office, 475 Fifth Ave.  
H. A. Lawrence, G. A. Passenger Dept.

OMAHA, NEBR.—1523 Farnam St.  
L. Beindorff, G. A. Passenger Dept.  
A. K. Curtis, City Passenger Agent.  
F. E. Watkins, Traveling Passenger Agent.  
E. C. Mallon, Traveling Passenger Agent.

PHILADELPHIA, PA.—508 Commercial Trust Bldg.  
H. L. Lauby, General Agent.  
Gordon G. Noble, T. F. & Passenger Agent.  
J. M. T. Fritz, T. F. & Passenger Agent.  
J. L. Brechin, T. F. & Passenger Agent.  
L. R. Tibke, City Passenger Agent.

PITTSBURGH, PA.—216 Oliver Bldg.  
John D. Carter, General Agent.  
Edward Emery, Dist. Passenger Agent.  
G. O. Hassenfritz, T. F. & Passenger Agent.  
Gaylord F. Allen, T. F. & Passenger Agent.  
Gregg W. Cook, City Passenger Agent.

ST. LOUIS, MO.—203 Carleton Bldg.  
J. L. Carney, General Agent.  
J. M. Rebmann, Traveling Passenger Agent.  
J. J. McCarthy, City Passenger Agent.

TORONTO, ONT.—69 Yonge St.  
Geo. W. Vaux, General Agent.

W. S. BASINGER  
Passenger Traffic Mgr.  
Omaha, Neb.

C. J. COLLINS  
Ass't Passenger Traffic Mgr.  
Omaha, Neb.

J. P. CUMMINS  
General Passenger Agent  
Omaha, Neb.

D. S. SPENCER  
General Passenger Agent  
Salt Lake City, Utah

W. K. CUNDIFF  
General Passenger Agent  
Portland, Ore.

G. R. BIERMAN  
General Passenger Agent  
Los Angeles, Calif.

## Chicago & North Western Line

## Union Pacific System

# APPLICATION FOR RESERVATION

## DEPARTMENT OF TOURS

Chicago & North Western Ry.—Union Pacific System

City

Date

Dear Sir:

Parties listed below wish to join Tour indicated. Leaving Chicago.....

Date

Y		YRG		YR		YZ		Z		ZRG		PNW		C		A	
---	--	-----	--	----	--	----	--	---	--	-----	--	-----	--	---	--	---	--

(Insert tour number)

NAME

STREET ADDRESS

CITY

STATE

Names and ages of any minors listed above.....

Will require Pullman space as indicated: (Show number of berths desired)

- ☐ Lower berth    ☐ Upper berth    ☐ Section    ☐ Section (occupied by one person)  
☐ Compartment    ☐ Drawing room

In Yellowstone Park    ☐ Hotels    ☐ Lodges    At Hotels En Route    ☐ Single Room    ☐ Double Room

Single Room will be assigned at additional cost to all persons traveling alone except in National Parks where Government regulations require doubling.

When two or more in party state how members wish to be assigned to Pullman and hotel or lodge accommodations .....

☐ Will make Estes Park Extension "YRG" Tour.    ☐ Will make Colorado Springs Extension "YR" Tour.

Will make complete tour.....  
(Yes or No. If "No," State After Remarks Your Plans)

Remarks:.....

**Complete Information Will Gladly Be Furnished for Any Independent Trip West**

Indicate points you wish to visit and approximate leaving date.....

Name.....

Address..... City..... State.....

Detach and mail to any representative listed herein.



