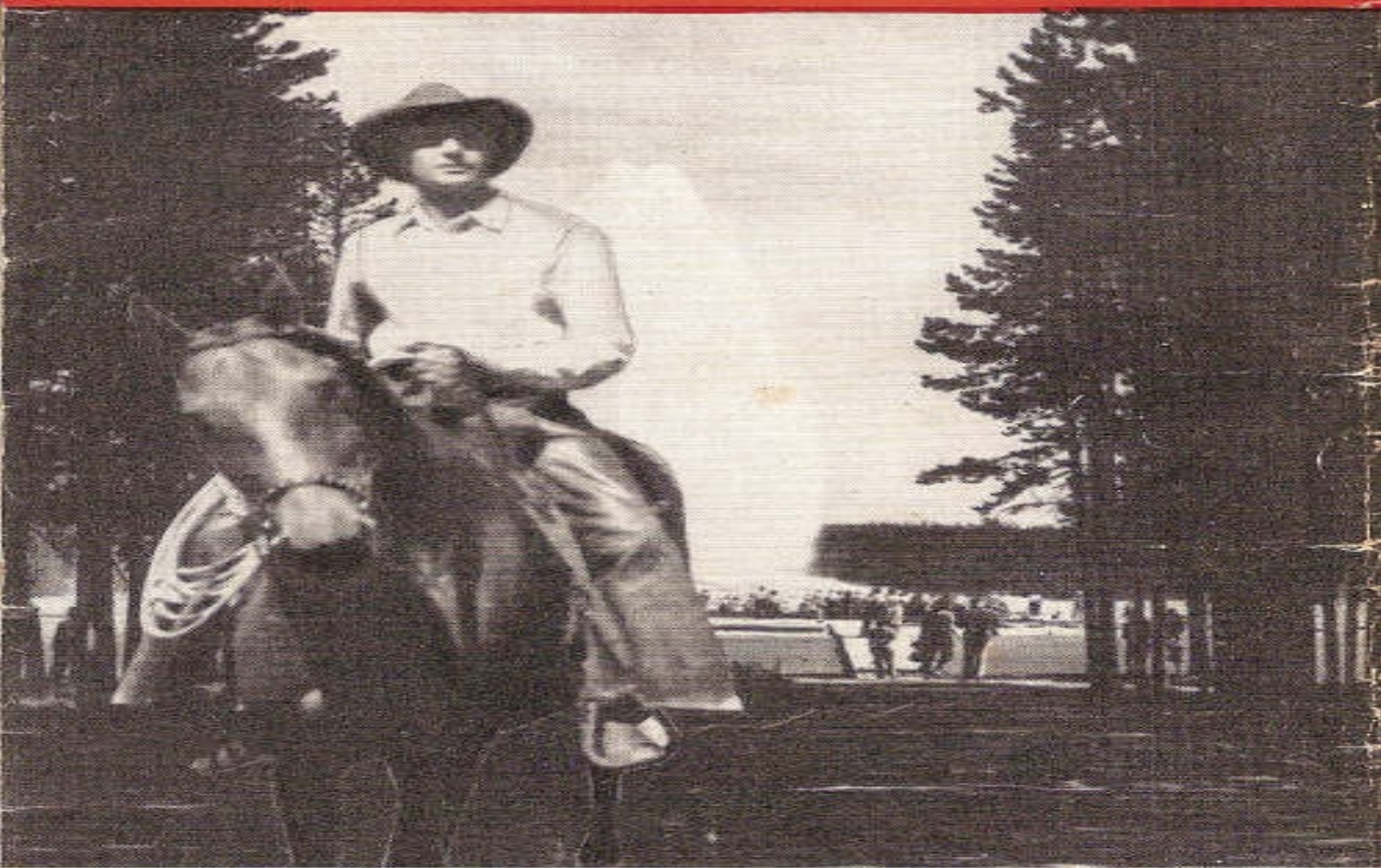


# *Yellowstone* via Gallatin Gateway MONTANA



## The Milwaukee Road



*The friendly Railroad of  
the friendly West*



The Project Gutenberg EBook of Yellowstone via Gallatin Gateway Montana, by Milwaukee Road Corporation

This eBook is for the use of anyone anywhere at no cost and with almost no restrictions whatsoever. You may copy it, give it away or re-use it under the terms of the Project Gutenberg License included with this eBook or online at [www.gutenberg.org](http://www.gutenberg.org)

Title: Yellowstone via Gallatin Gateway Montana

Author: Milwaukee Road Corporation

Release Date: July 16, 2014 [EBook #46305]

Language: English

\*\*\* START OF THIS PROJECT GUTENBERG EBOOK YELLOWSTONE VIA GALLATIN GATEWAY \*\*\*

Produced by Stephen Hutcheson, the Mo-Ark Regional Railroad Museum at Poplar Bluff, and the Online Distributed Proofreading Team at <http://www.pgdp.net>

***Yellowstone***  
**via**  
**Gallatin Gateway**  
**MONTANA**

The  
Milwaukee  
Road

*The friendly Railroad of the friendly West*



*Set in green lawns, the attractive and informal Gallatin Gateway Inn is staffed by people imbued with the open-hearted spirit of the West.*



*You'll feel at home here right from the moment you step off the comfortable motor coach.*

# Start your glorious western vacation at GALLATIN GATEWAY INN

Composed in equal parts of natural beauty, mystery and fascination, Yellowstone Park has long taken rank as one of America's and the world's show places. Recently it has entertained as many as a million visitors in a single summer.

Now *you* are planning a Yellowstone vacation. We propose, in this booklet, to give you a foretaste of the wonders that lie ahead. To show you some of the advantages of entering the Park via the scenic Gallatin Gateway, and to suggest the entertainment possibilities of a few extra days spent at Gallatin Gateway Inn.

Gallatin Gateway Inn lies about thirty-five miles south of Three Forks, Montana, on the mainline of The Milwaukee Road. The Inn was built by the Railroad and is now privately operated for the convenience of Yellowstone passengers as well as for the entertainment of guests who wish to stay over for a short time.

Of modified Spanish design, the hospitable Inn is surrounded by the green, irrigated meadows of the lovely Gallatin valley. In the background rise the timber-clad mountains of the Bridger, Gallatin and Madison ranges of the Montana Rockies.

At its elevation of almost 5,000 feet, the climate is ideal throughout the summer months. There is a high percentage of bright, sunny days yet it is always cool enough at night to enjoy the comfort of woolen blankets.

Passengers for Yellowstone on The Milwaukee Road's COLUMBIAN taking regular Park tours have only an hour or two at the Inn. However, passengers on the new Olympian HIAWATHA arrive at the Inn in mid-afternoon and do not ordinarily leave for the Park till next day after lunch. With a knowledge of the Inn and its facilities, you can plan to take fullest advantage of your time there. And, of course, you may decide to extend your stay.

Set in wide lawns and gardens, Gallatin Gateway Inn is a delightfully comfortable place. It has bright, airy bedrooms, a spacious two-story living room, a sun-lit dining room and the friendly Corral cocktail lounge. The food is procured from the Inn's own gardens, from nearby farms and ranches, and from markets along the route of The Milwaukee Road. Prepared by skilled chefs and expertly served, it is guaranteed to be just right for the hearty appetites generated by mountain air.



*Outdoor activities and mountain air are a combination that make Gallatin Inn's famous food taste even better.*



*The bedrooms, far right, are airy and comfortable.*

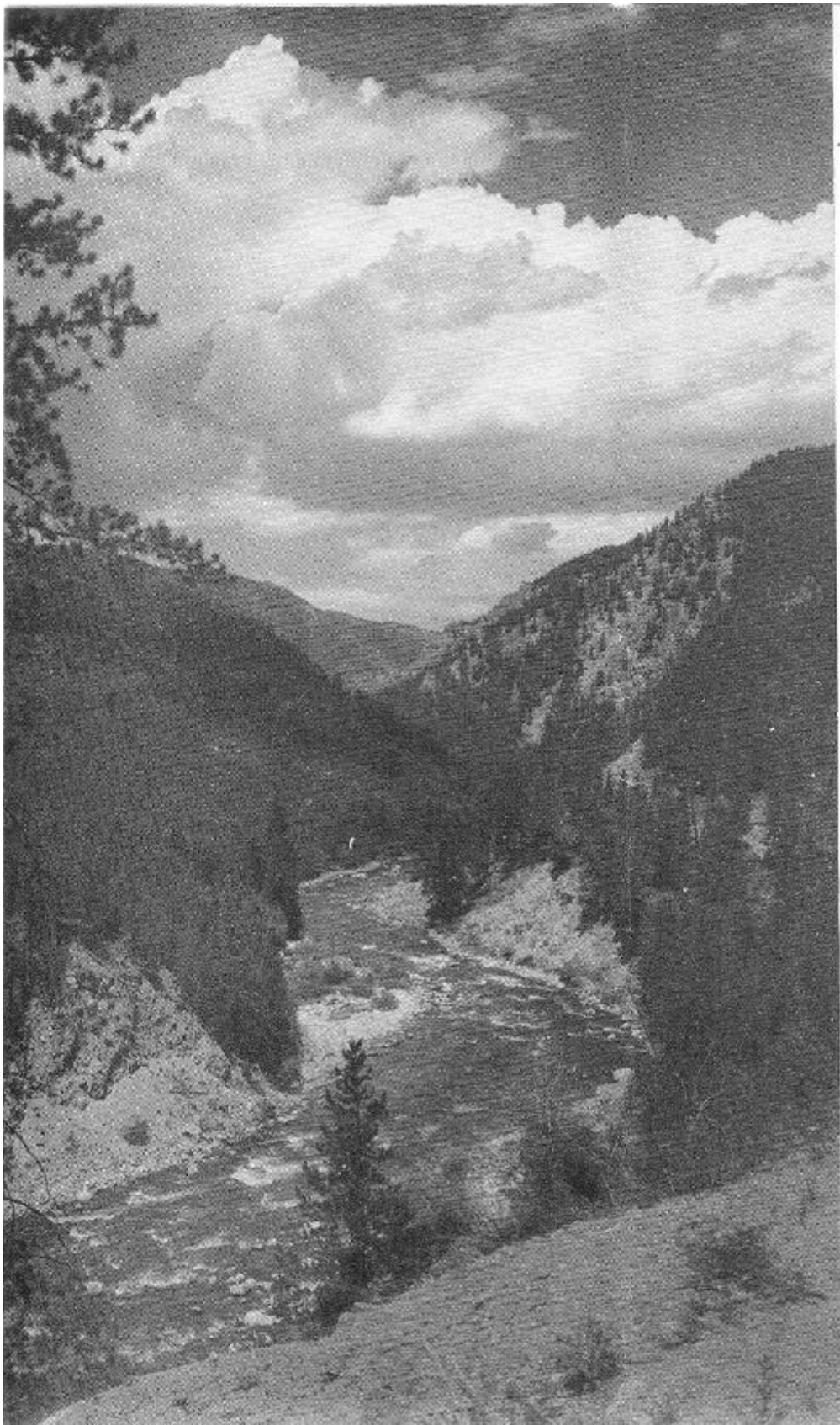
Your genial host at Gallatin Gateway Inn combines a full understanding of hotel operation with an intimate knowledge of the surrounding country. His staff takes pride in seeing that you enjoy every minute of your stay.

On your way to or from Yellowstone, a few days at the Inn will prove a pleasant interlude. You can spend those days in quiet loafing, in active sports, or in making exploratory trips.

The swift flowing Gallatin river offers fine trout fishing just a short walk from the door. Archery, clock golf and tennis may be enjoyed right on the spacious grounds. Whatever you do you'll like the comfort and the congenial atmosphere of Gallatin Gateway Inn.



*The spacious, two-story lounge has an open fireplace, piano, and plenty of easy chairs. Writing desks, too, to catch up on postcards and letters.*



*The Gallatin valley is a long succession of lovely prospects.*





*Here the camera catches an S-curve in the river at Sagebrush Point. The full 80 miles from Gallatin Gateway to Yellowstone are a scenic delight that you'll long remember.*

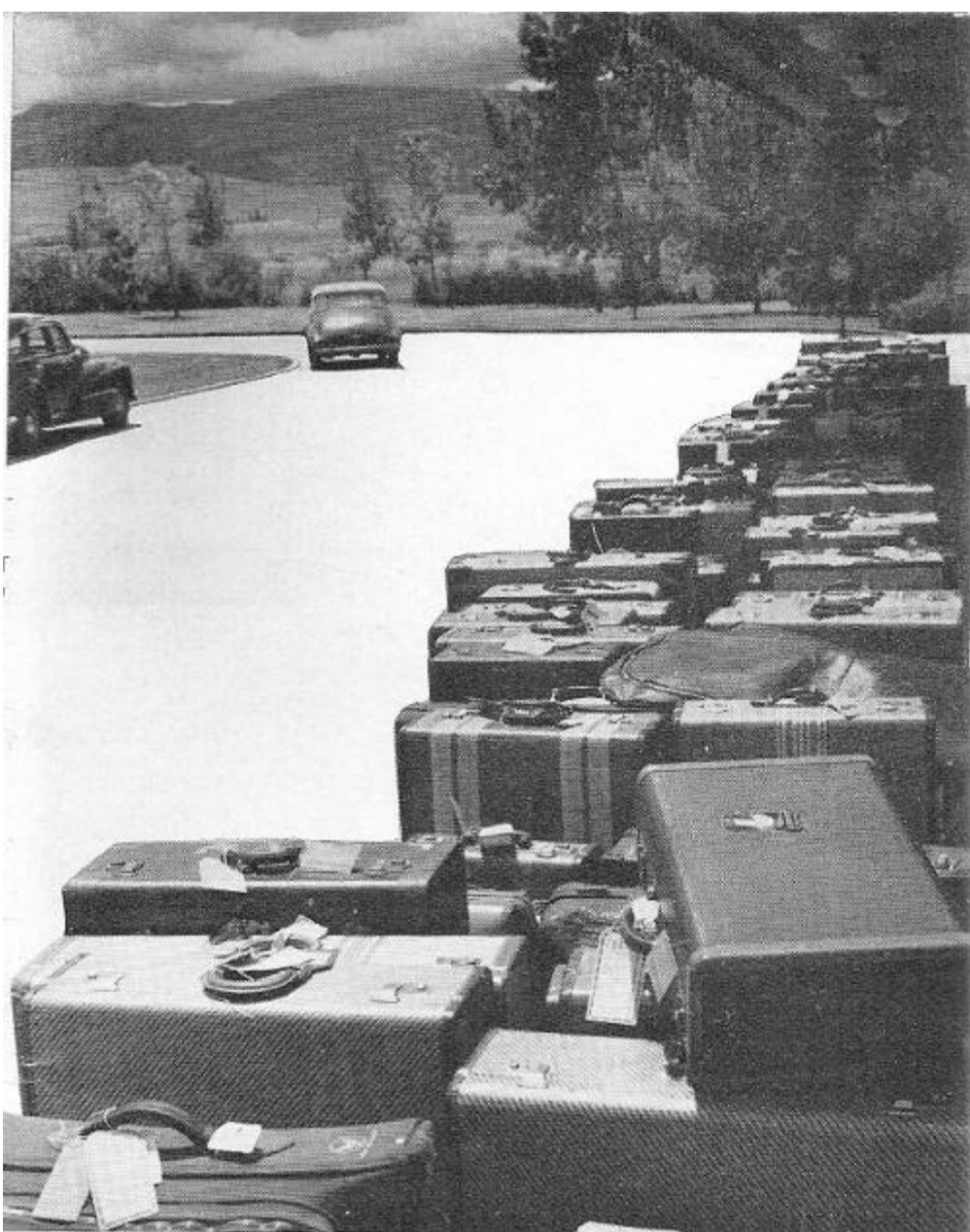


# OFF TO YELLOWSTONE

Chance turned the footsteps of the first white man toward Yellowstone. In 1807, John Colter, a member of the Lewis and Clark Expedition, was wounded in an Indian battle near Jackson Hole. In escaping, he journeyed northward and penetrated Yellowstone as far as what is now known as Tower Falls.

More than twenty years later, Jim Bridger, a famous frontier guide, also entered the region that had come to be known as “Colter’s Hell” and verified the fantastic tales of his predecessor. But even then, no one accepted the story. Colter and Bridger were in the position of Marco Polo who had discovered an empire so strange that its very existence was doubted.

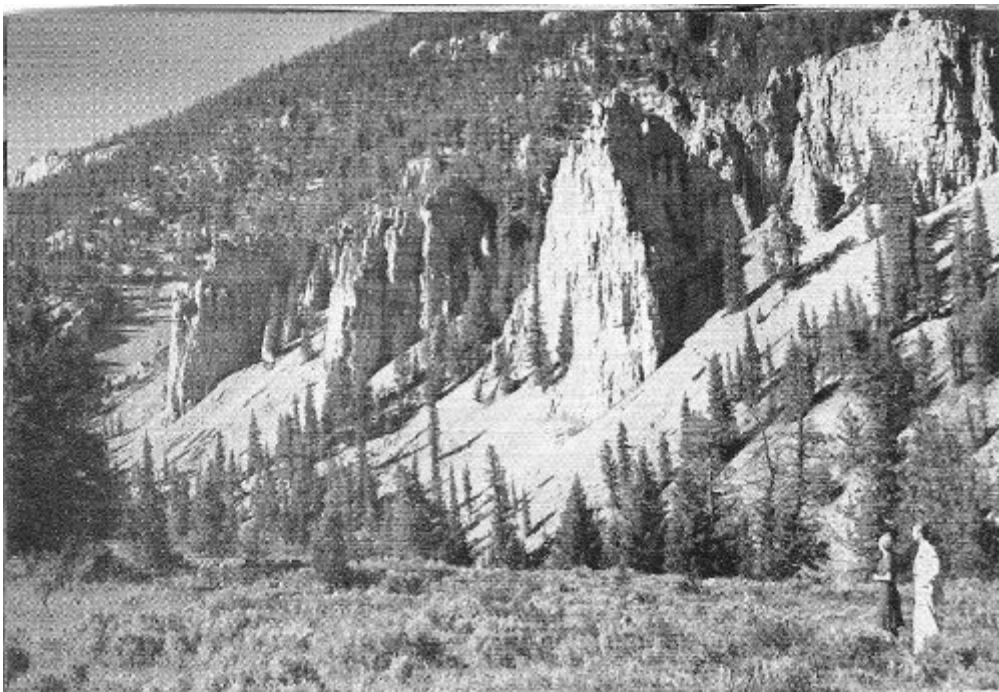
Not until 1870, when a public exploring party made a thorough study of the region, were its wonders accepted as fact. Then, action quickly followed. In 1872 a bill was introduced before congress and speedily passed, that established Yellowstone as the first of our National Parks. A vast rectangle of 3,438 square miles lying in the northwest corner of Wyoming and overlapping into Montana and Idaho, Yellowstone is a broad, volcanic plateau with an average elevation of 8,000 feet, and with mountain peaks in and around the park rising as high as ten and twelve thousand feet ... more than two million enchanted acres with the greatest and most varied array of wonders in all the earth.



But all this is recent history. Take a brief look at the amazing past of Yellowstone. Millions of years ago, the present high plateau was a parched, arid plain sheltered behind the buttresses of the continent's two great mountain ranges—Appalachia in the East and Cascadia in the West. Slowly, the land sank and Yellowstone was buried a hundred fathoms deep under the arctic waters of the Sundance Sea. As the invading waters retreated, a shift in temperature changed Yellowstone into a huge subtropical marsh where giant dinosaurs drowsed and fed in the green half-light that filtered down through jungle trees.

The next great geologic change saw Yellowstone thrust skyward by the slow buckling of earth's crust ... scorched and shaken by a million years of volcanic activity ... covered by a vast sea of molten rhyolite. The hot lava slowly cooled and was in turn engulfed by creeping rivers of blue-green glacial ice.

As this new ice age withdrew, countless sediment-bearing streams roared down from the melting glaciers and, aided by the bitter winds of high places, began carving Yellowstone into its present form.



*The Cathedrals are natural Gothic spires of hard stone that resisted erosion by the river when it carved the deep gorge of Gallatin Canyon. These formations are especially beautiful under a Montana moon.*



Even today, Yellowstone is a “young” land that is undergoing relatively rapid changes. The subterranean heat that causes its geyser activity is slowly subsiding.

Old geysers die out and new ones grow in power and regularity. Imperceptibly, the canyons deepen, and erosion carves new patterns on rocky walls.

This is the land ... rich in forests and wild life, and gemmed with sparkling mountain lakes ... that has been set aside for the perpetual enjoyment of our people. This is Yellowstone, oldest and greatest of America’s National Parks.

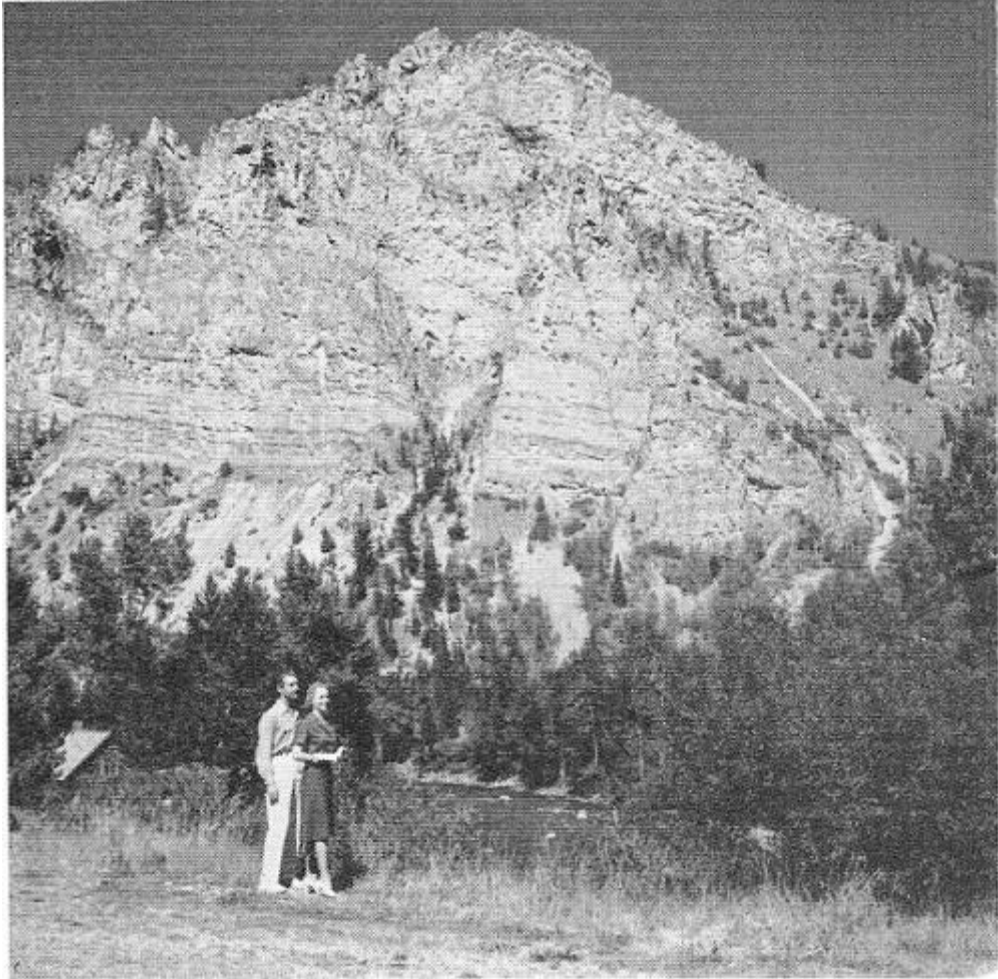
Your trip to Yellowstone via The Milwaukee Road takes you through the most spectacular of all entrances—Gallatin Gateway.

You leave the train at Three Forks, Montana, on the main transcontinental line of The Milwaukee



Road. Just outside of town the Gallatin, Madison and Jefferson rivers flow together to form the headwaters of the mighty Missouri.

Lewis and Clark's expedition camped here in 1805 on their way to the Pacific Northwest. There is a bronze tablet in the town park dedicated to Sacajawea, the Indian girl who guided the explorers. Three Forks was established as a trading post for the Missouri Fur Company in 1810.



*Pale shades of gray, buff, yellow and orange-red give rich color to the face of Sheep Mountain in Gallatin Canyon. Dark conifers cling to the lower slopes.*

Leaving the train, you board a motor coach for a delightful drive of a little over an hour to Gallatin Gateway Inn.



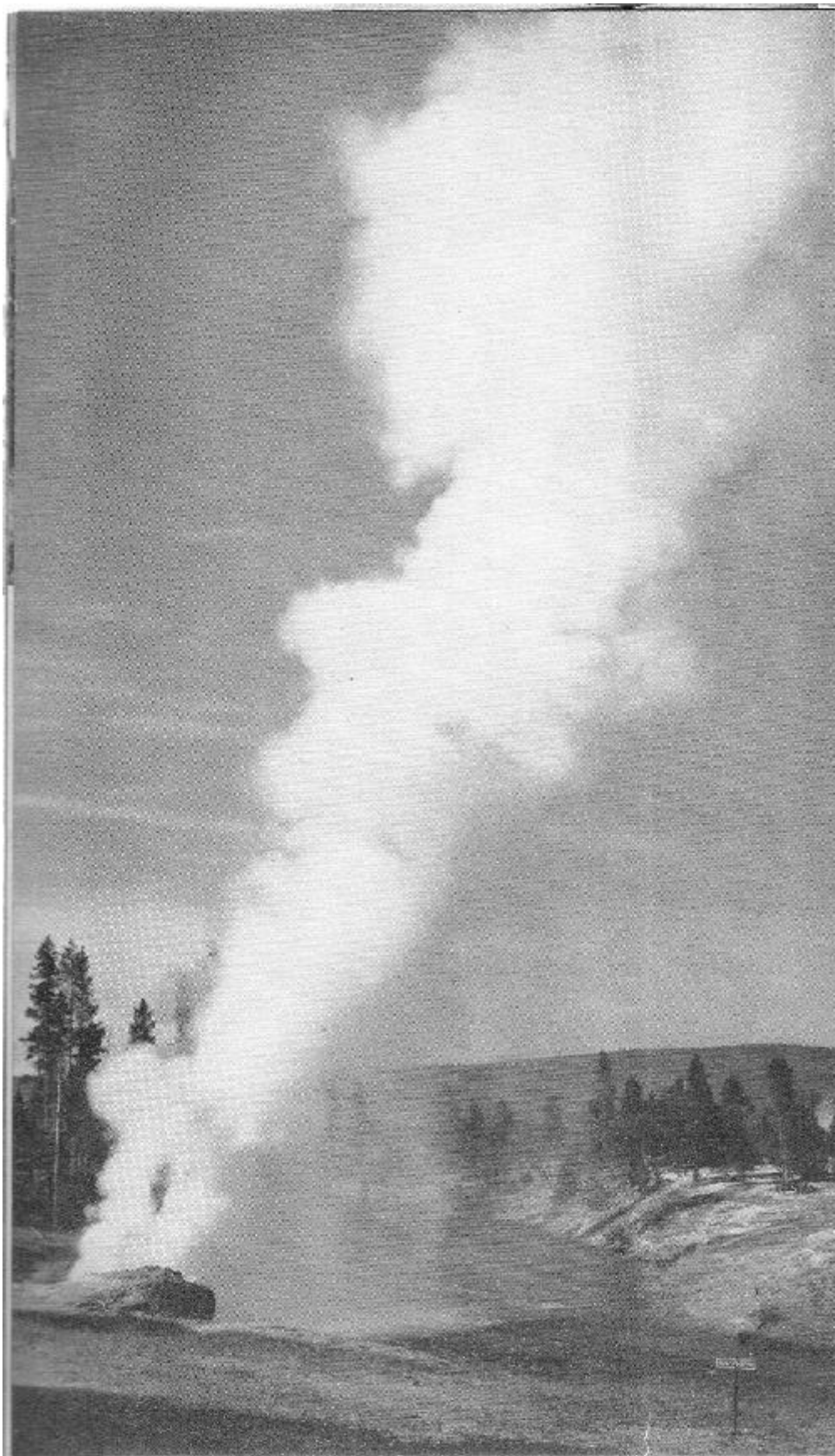
*Accurately carved by a strange quirk of nature, Pulpit Rock towers high above the Gallatin Valley. Formations of this kind are not too unusual, and result when a core of hard rock is surrounded by softer material.*





*Yellowstone-bound, a Park motor coach starts up the Gallatin Valley with Castle Rock in the background. The comfortable buses have roll-back tops that permit full views of the surrounding rocky walls.*





*Riverside Geyser is an irregular performer that sends its plume-like jet diagonally out over the Firehole River. Higher up, the Firehole is a good fishing stream, but here its waters are strongly charged with minerals from the geysers and hot springs.*



*A bus load of visitors has stopped for a look at Old Faithful shooting its mighty column skyward.*



*The Ranger at the far right indicates one of the hundreds of tinted pools that dot the geyser basins.*

## **First Stop ... Geyserland**

One of the chief attractions of entering Yellowstone via Gallatin Gateway is the 80 mile motor trip through glorious mountain country that you enjoy without extra charge.

Promptly after lunch, you leave Gallatin Gateway Inn in one of the luxurious motor coaches of the Yellowstone Park Company and begin the trip southward.

In a short time you enter spectacular Gallatin Canyon. Just beyond Roaring Creek lie the huge, eroded battlements of Castle and Cathedral Rocks, majestic cliffs that dwarf the tiny river flowing swiftly at their base. This is the famed Montana dude ranch country, and you glimpse many of the ranches in the innumerable little valleys that are tributary to the Gallatin.

You'll see Sagebrush Point where the Gallatin flows in a graceful S-curve hundreds of feet below the road ... the broad cone of Lone Mountain rising to a height of ten thousand feet and Pulpit Rock, oddly and accurately carved by some freak of Nature.

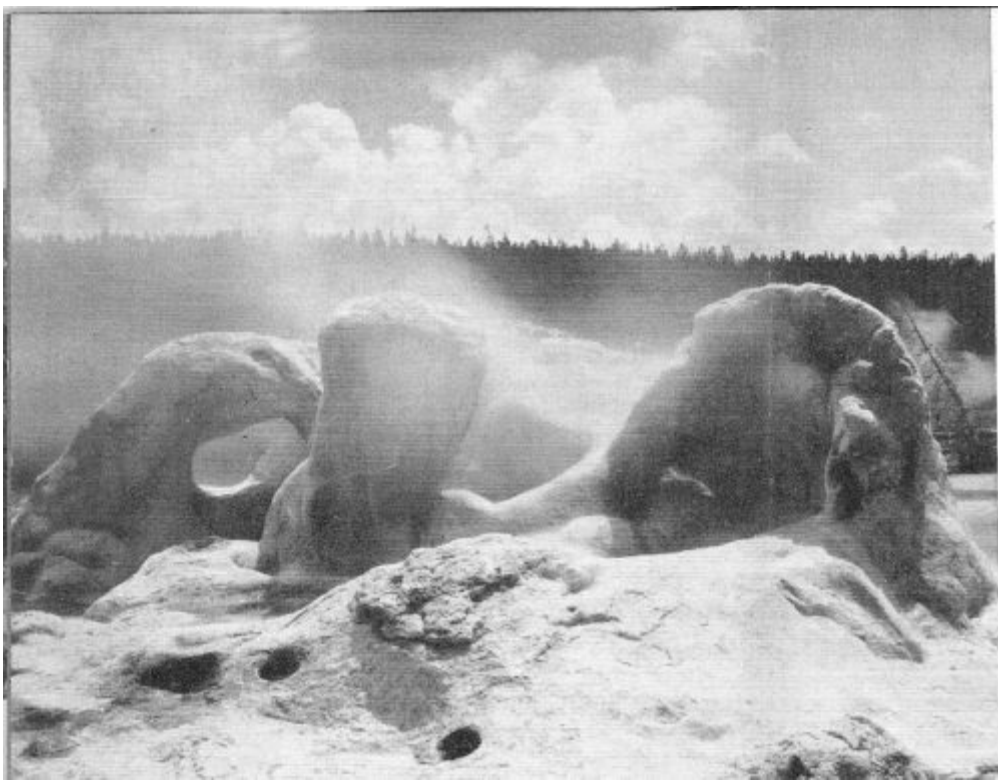
Perhaps you'll catch sight of a moose feeding on lily roots in a pond beside the road, or a band of elk emerging warily from the timber. Over there is a new beaver dam, and that gray shadow skirting the road is a coyote.





*Old Faithful Inn is said to be one of the highest and largest log buildings in the world. Its pleasantly rustic public rooms have long made it a favorite with Park visitors. Facilities are exceptionally complete.*

Crossing dozens of creeks with picturesque, western names, you enter the boundaries of Yellowstone. Again leaving the Park, the road winds through the Madison National Forest, skirts Hebgen Lake, crosses the Madison and brings you to West Yellowstone—your official entrance to the Park.



*Its curiously formed cone has earned it the name of Grotto Geyser. In its two major basins, Yellowstone has more active geysers than all the rest of the world, but you'll never tire of their varied fascination.*



The Motor trip from Gallatin Gateway is a perfect introduction to Yellowstone, and shows you country unlike any within the Park.

## **Here Comes Old Faithful**

From West Yellowstone, the route follows the Madison through Christmas Tree Park, and then down the lovely valley of the Firehole River into geyserland. There are more geysers in Yellowstone than in all the rest of the world, and the greatest of them are here in the Lower and Upper Basins. The hiss of steam, low, subterranean mutterings and the roar of geysers in action make this landscape a scene from the Inferno. You see Fountain, Great Fountain, Riverside and

Giant geysers, Morning Glory Pool and Fountain Paint Pot, and reach Old Faithful for dinner and the night.

The most famous geyser in the world, Old Faithful may be depended upon to stage its almost hourly shows for your special benefit. Approximately every sixty-five minutes it growls and hisses for a moment, and then leaps into action sending its glorious plume of boiling water 120 or more feet into the sky.

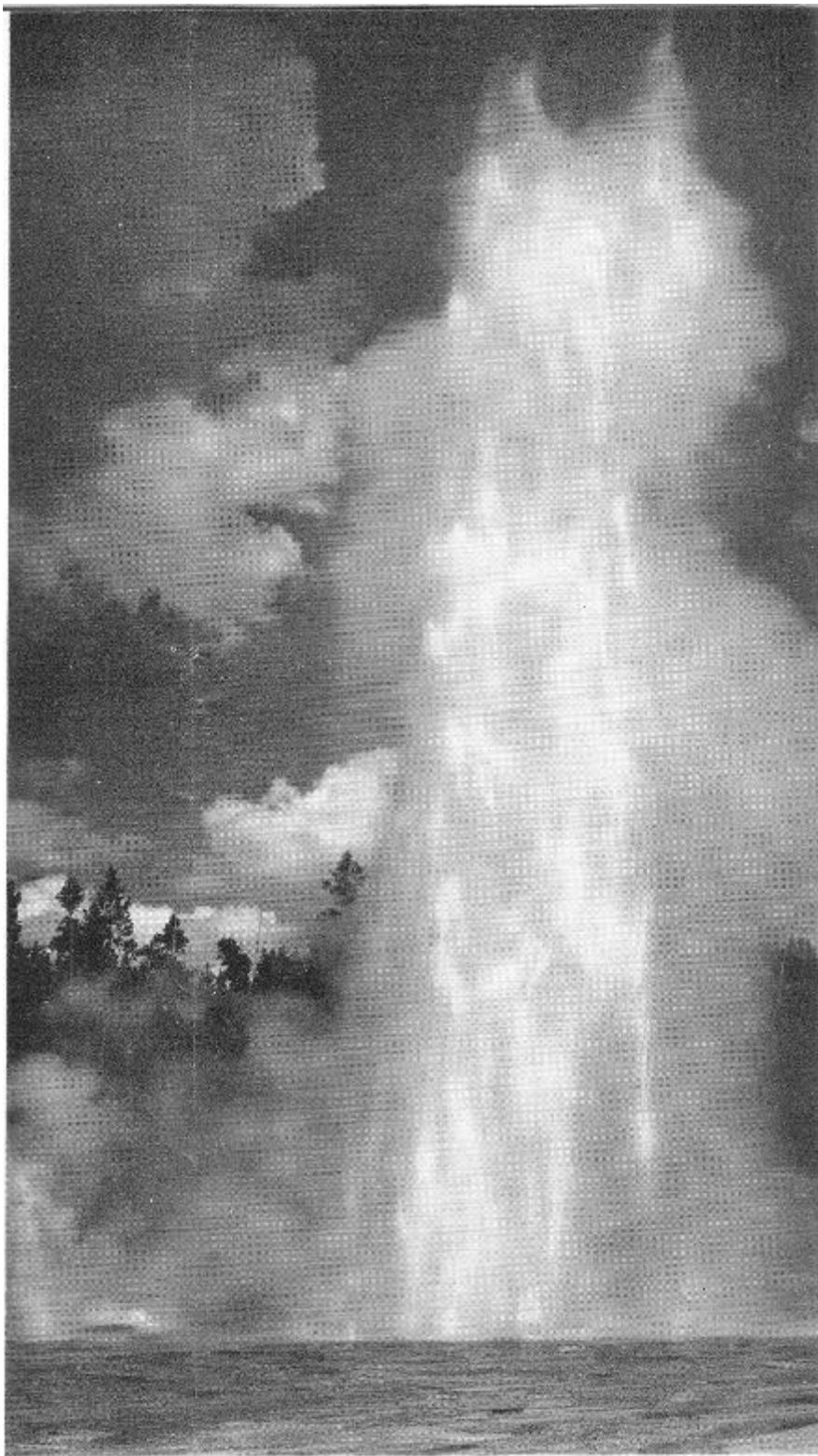
Old Faithful is a perfect spot for your first stay in Yellowstone and offers a variety of attractions that will make your time here seem all too short. Besides the many nearby geysers, you will see the iridescent turquoise of Morning Glory Pool with its flower-tinted cone ... Black Sand Pool and Sapphire Springs ... Firehole Lake with its flame-like streamers of gas bubbling to the surface, Chinaman Pool and numerous other steaming pools and springs.



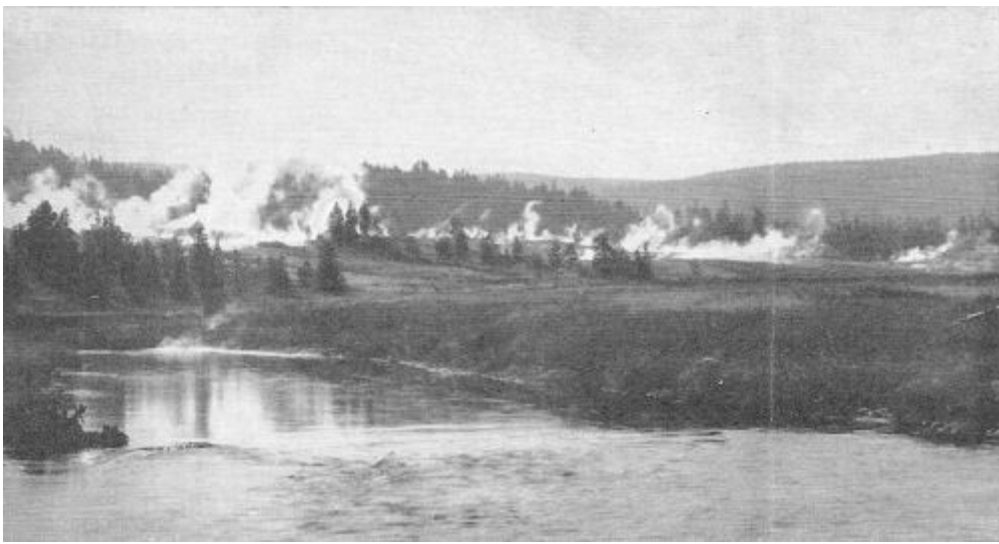
*Yellowstone's Ranger-Naturalists are always on hand to give interesting explanations of the numberless wonders of the Park.*







*Giant Geyser, though an irregular performer, is the largest in the Park. At full discharge it sends its huge stream of boiling water and steam from 200 to 250 feet in the air. The rumble and roar of the geysers can be heard for long distances in the clear mountain air.*



*Across the Firehole River clouds of drifting steam mark the Firehole Geyser Basin—another reason why beautiful Yellowstone is the most photographed of our National Parks.*

There is an enclosed swimming pool and a museum. A variety of short walking trips may be taken with the ranger-naturalists, and longer trips made on horseback with colorful wranglers who know the phenomena of the Park.

Old Faithful Inn itself is built wholly of native materials. Within its friendly walls, you dine, dance, play and meet congenial fellow travelers before the great open fireplace.

The following day, your caravan moves on from Old Faithful past the beautiful Kepler Cascades of the Firehole, and over the Continental Divide. Here is the Rocky Mountain watershed that sends the rivers on one side flowing down to the Atlantic and the Gulf of Mexico, and on the other side, to the Pacific. To the south lie Shoshone Lake and the snowy peaks of the Teton range.

### **Lovely Yellowstone Lake**

At Thumb, the road descends to the shore of Yellowstone Lake. 7,730 feet above sea level, this huge lake covering more than 130 square miles, is America's highest navigable body of water. Past Fishing Cone, the road skirts the shore of the Lake for many miles to the mouth of the Yellowstone River. Many Yellowstone visitors enjoy fishing or boating on the lake.

Big, hard-fighting trout of several species inhabit the deep, perpetually cold waters of the lake, and afford the finest kind of sport. Boats, guides and fishing tackle are available.



*Here is part of the crowd clustered around Old Faithful as it nears time for an eruption. This famous geyser discharges with almost clock-like regularity at intervals of about 65 minutes.*

There are also a number of modern speedboats that were painstakingly hauled up to the lake. These mahogany beauties make regular passenger trips and give a real thrill as they race over the sparkling water. Yellowstone Lake is one of the few places in America where you may still see wild swans—the last survivors of once-numerous flocks of these majestic birds. Pelicans are plentiful on Molly Island.



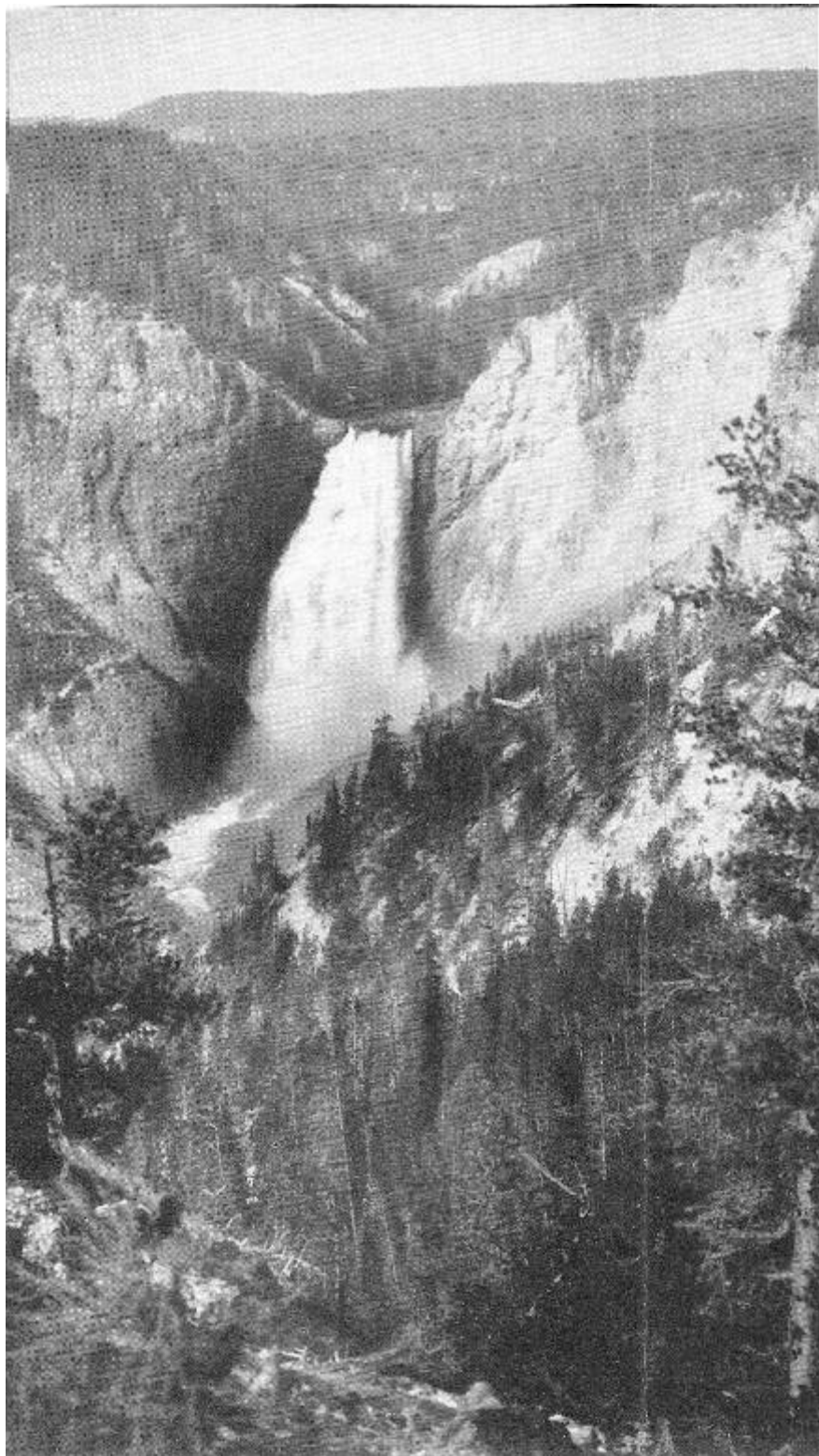
*Mile-and-a-half high Yellowstone Lake is ringed by the snow-capped Absaroka mountains.*

But now our tour continues. Winding through beautiful Hayden Valley, the road continues, for the most part, close beside the Yellowstone River and then past Mud Volcano. Soon we cross over Chittenden Bridge, pass the Upper and Lower Falls and reach hospitable Canyon Hotel that is superbly situated at the head of the Grand Canyon of the Yellowstone.



*Pine trees cling precariously to the rocky walls of Kepler Cascades where the Firehole River drops down a series of picturesque falls and rapids.*





*At the head of the Grand Canyon, the Yellowstone River roars thunderously down the great falls. Here, from viewpoints on either side of the canyon, is one of the most gloriously colorful scenes on this continent.*



## **Magnificently Colorful ... the Grand Canyon**

To many visitors, the Grand Canyon is the highpoint of Yellowstone. And well it may be, for the views from Artist or Inspiration Points are scarcely rivaled in all the world. A third of a mile wide and more than a thousand feet deep, the mighty gorge has been fantastically carved by the rushing waters of the Yellowstone River. Ranging in tone from pale lemon to tawny buff, the rock walls of the canyon are splashed with a hundred shades of crimson, blue and green—a glorious play of color that changes hourly with the passage of the sun. And far down at the bottom winds the jade green ribbon of the Yellowstone. Muted by distance, you hear the thunder of the Great Falls where the river leaps out and down, 308 feet into the gorge.

To those who have seen it, the Canyon remains one of the scenic highlights of a lifetime. Warm yet delicate in coloring, big but not so big that it staggers the imagination, the gorge is as perfect and complete as a flawless gem.

Leaving Canyon Hotel, you continue northward through Dunraven Pass, where the road climbs the shoulder of Mt. Washburn. If you wish, you may take the more spectacular route to the very summit of the 10,317 foot mountain for the finest panorama of the Park.

Soon the road rejoins the Yellowstone River and you see Tower Falls. Flowing down from the high plateau, Tower Creek plunges down a 132-foot drop to join the Yellowstone in its long course eastward. Needle-like volcanic rocks stand sentinel at the head of the falls and nearby are strange buttresses of hard basalt forming palisades as regular as if they had been cut by man.

A little farther up the road is a forest of petrified trees. These fallen giants of hard stone reproduce, in astonishing detail and in a variety of rich colors, the bark and wood fibers of which they were

once composed.



*Downstream from the main part of the canyon, the Yellowstone River winds in a narrow ribbon through the gray and buff walls of a rocky gorge. With the changing light, the river varies from silver to jade green.*



*Not far from Chittenden Bridge, the Yellowstone plunges down the Upper Falls. Seen from the lookout platform or from the camera viewpoint here, the fury and power of the cataract is indescribably impressive.*







*Looking northeast from Inspiration Point, the canyon of the Yellowstone spreads its splendor before you. Do an about-face here and the view is toward the lower falls. Rapids lace the dark water with creamy foam.*

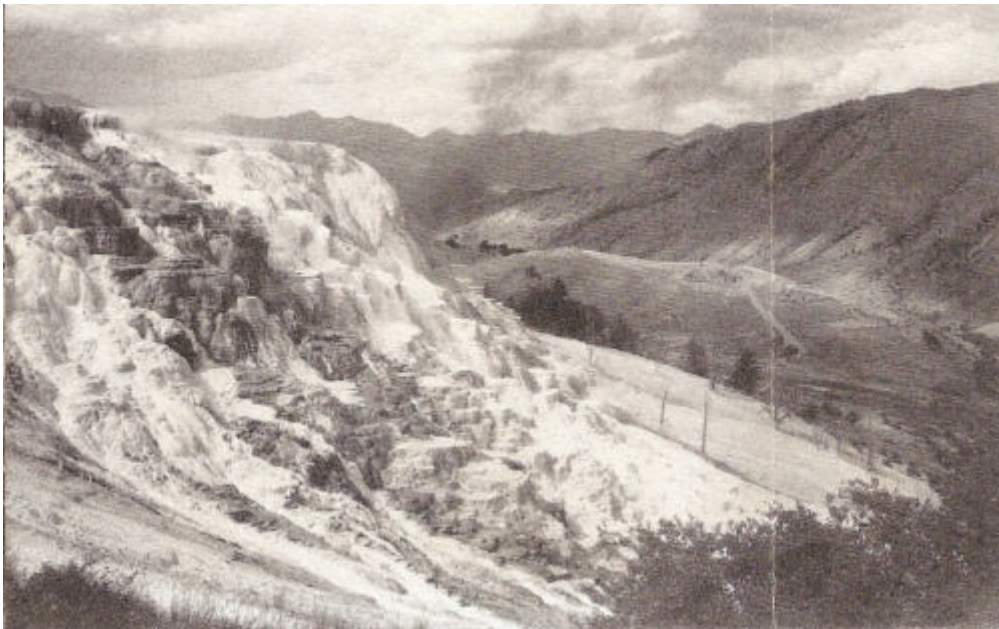


*Pulpit Terrace at Mammoth Hot Springs has been built up from the mineral laden waters of hot springs. Ashy white in its dry, natural state, the rocky walls are tinted rainbow colors by living algae in the waters.*



## **Fantasy in Stone ... Mammoth Terrace**

Built up and sculptured by the hot mineral waters, the smooth terraces of white stone at Mammoth Hot Springs are given a thousand delicate tints of vermillion, orange, pink and yellow by the living algae in the waters. You see Pulpit Terrace, Minerva, Cleopatra, White Elephant and the Devil's Kitchen.



*Here is huge Jupiter Terrace. These colorful formations change constantly in appearance as one spring temporarily dries up and another begins to flow. The more water, the more color is the general rule.*

Southward from Mammoth Hot Springs is Norris Geyser Basin with its collection of smaller geysers, hot springs and other phenomena. Here you will see the Black Growler, emitting superheated steam at a temperature of 284 degrees. The Chocolate Pots just beyond, demonstrate



the remarkable chemical coloring from which they derive their name.



*From a bluff just north of the community the buildings of Mammoth Hot Springs are spread before the camera. This is the administration center for Yellowstone Park, and, with the tourist facilities, comprises a small town in itself.*

Depending on the gateway selected for exit from the Park, schedules of Park tours vary slightly. Complete itineraries for the various tours are shown elsewhere in this book.

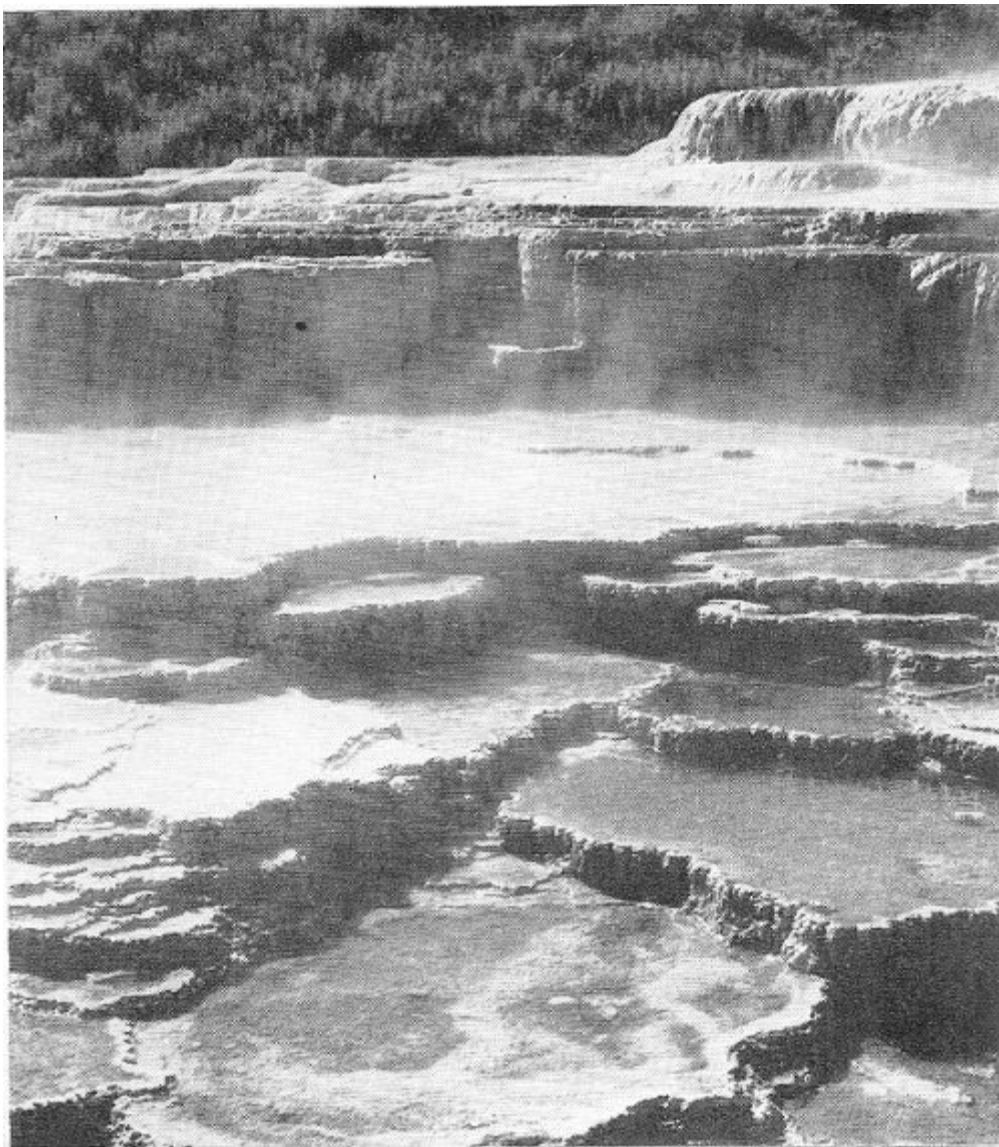
This brief summary is a far from complete outline of what may be seen and done in Yellowstone. You might profitably spend an entire summer within the confines of the Park or—as many do—come back repeatedly.

## **Wild Life in Abundance**

Yellowstone is a great wild animal refuge where the game is protected and therefore quite unafraid of humans. You will see dozens and dozens of the famous bears whose clumsy antics are an unfailing source of amusement. Among them is the grizzly bear, rightfully the most respected of all the wild animals. In meeting bears on the roads and paths, never tease the animals with food.

Almost anywhere in the Park you may catch glimpses of deer, and perhaps of buffalo, antelope, elk and mountain sheep as well as smaller animals such as marmots, beaver and chipmunks. You will have ample opportunity to take short walking trips. You can fish and swim; join community singing around huge campfires; listen to lectures on the geology and animal life of the Park; see informal entertainments by the boys and girls who staff the lodges and hotels; join in the fun of informal dances.

Whether you have little time or much, no finer vacation spot exists than magnificent, incredible Yellowstone. Boundless in wonders and in hospitality, this is your Park, your playground ... the magic land where dreams come true.

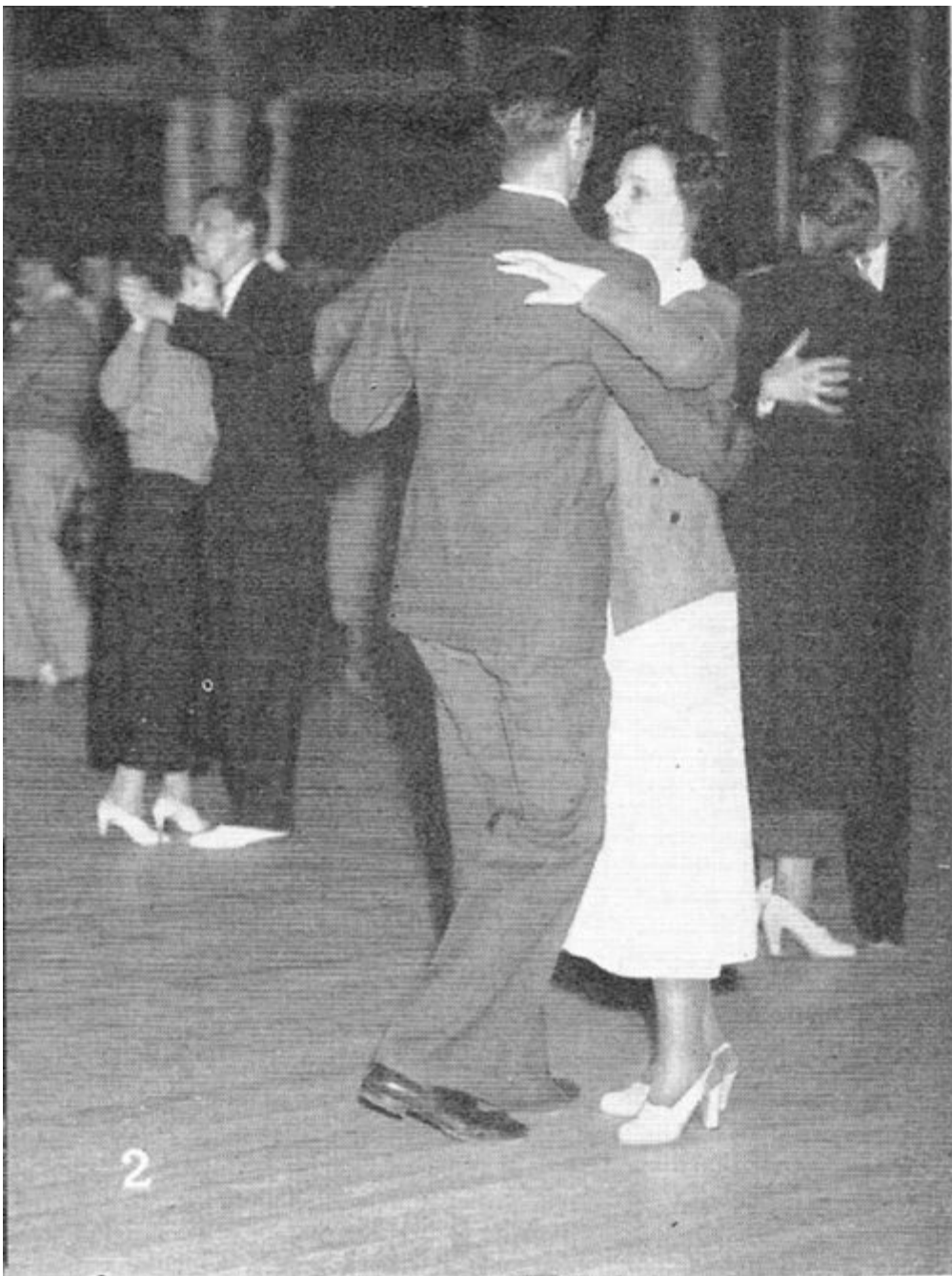


*Almost like man-made rice fields are these dikes and terraces engineered by nature from minerals carried in the waters of the hot springs.*

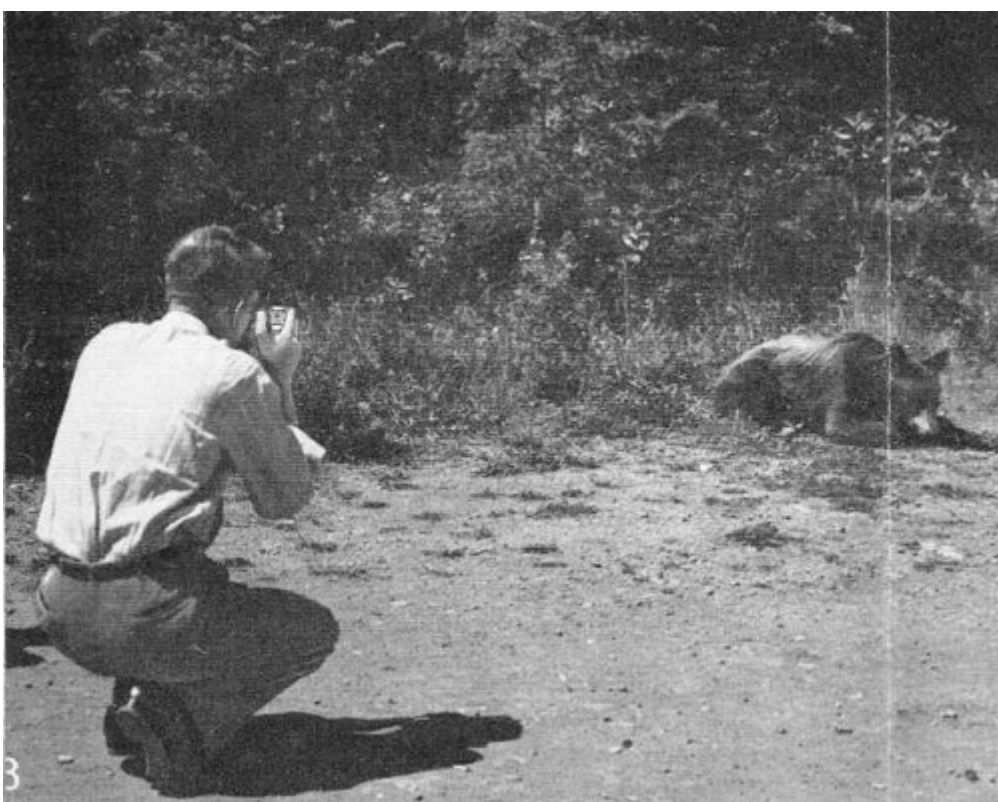
## **Yellowstone Fun**



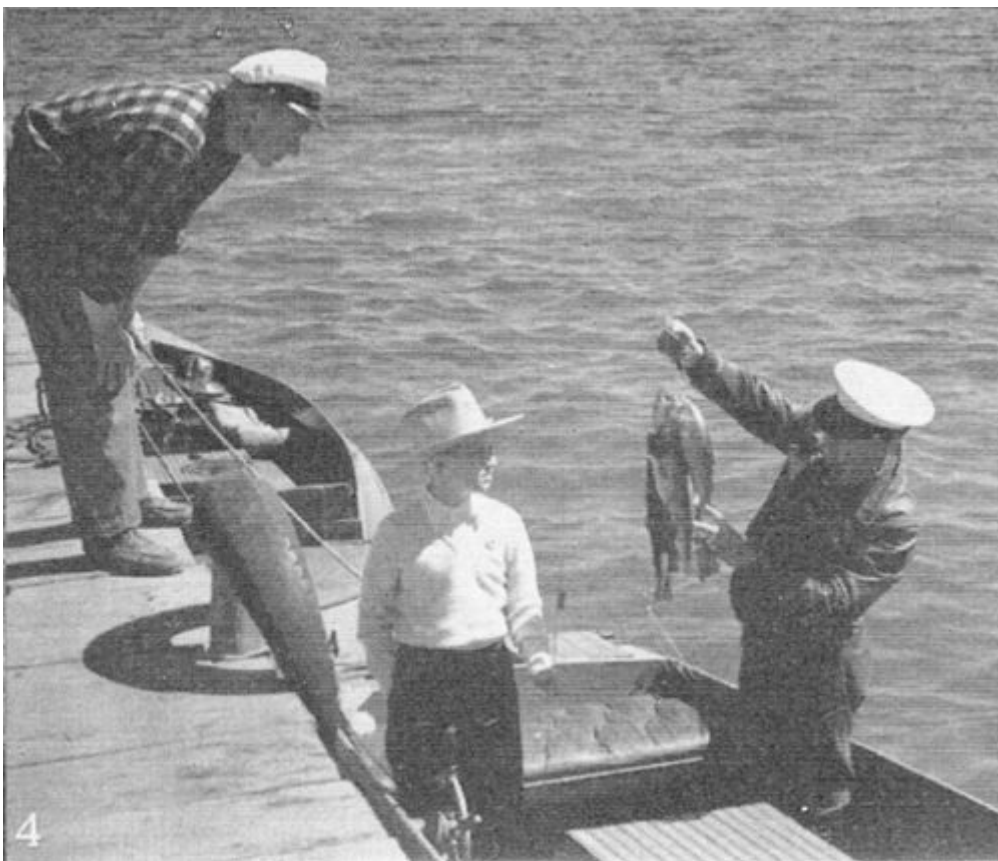
*1. A tour party with a Ranger guide starts through Old Faithful geyser basin.*



*2. Dances and friendly gatherings are nightly features at the hotels and lodges.*



*3. This camera fan has moved in for a close-up of a good-sized black bear.*



*4. Gamy, solid-fleshed trout like these reward the fisherman in Yellowstone Lake.*



*5. The horns of this young bull elk are “in the velvet” during the summer.*





*This relief map of Yellowstone shows all the features of the Park, the road from Gallatin Gateway Inn—the geyser basin, the road over the loop of the Continental Divide, the lake, the river and the circle of road up to Mammoth Hot Springs.*



*Geysers are the trademark of Yellowstone. Here is another view of a steaming basin.*



*Plenty of trout in the lakes and rivers.*



*Yellowstone visitors used to ride in stages like this.*



*Castle Geyser at ease.*



*Indian Chiefs of the Nez Perce Tribe.*

# Park Motor Transportation Schedule

Key Code for Meals:

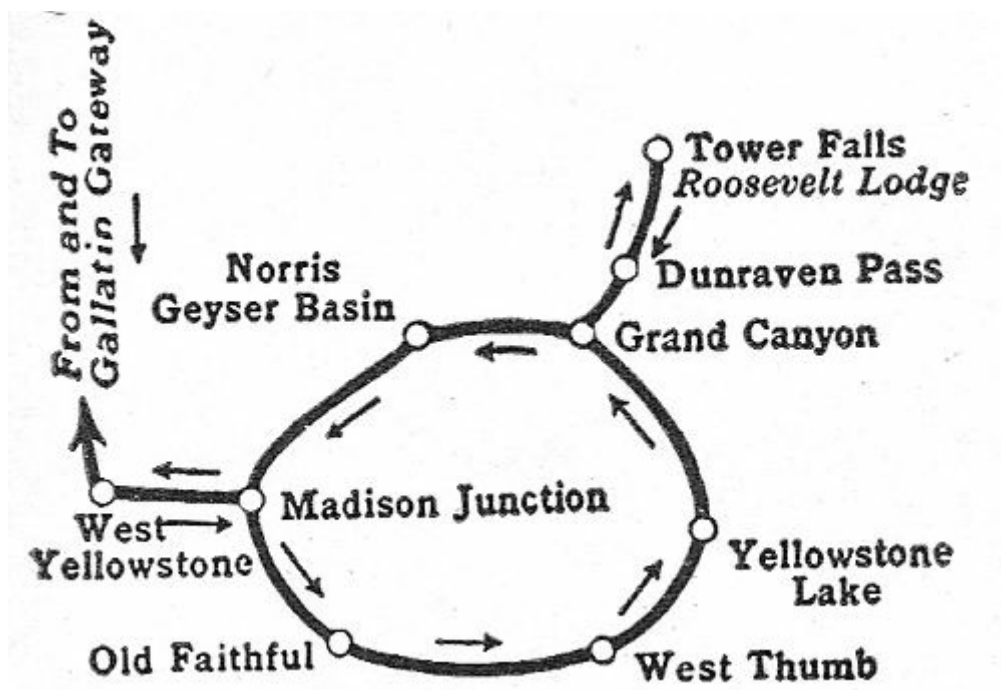
A: Breakfast

B: Lunch

C: Dinner

D: Lodging

## In and out the GALLATIN GATEWAY



### 1st Day

Lv. Gallatin Gateway

1:00 P.M. B

Ar. Old Faithful

6:11 P.M. CD

### 2nd Day

Lv. Old Faithful

1:30 P.M. AB

Ar. Grand Canyon (Via Artist Point)

4:55 P.M. CD

### 3rd Day

Lv. Grand Canyon (Tower Falls Side Trip)

8:20 A.M. A

Ar. Grand Canyon

10:09 A.M. B

Lv. Grand Canyon

1:00 P.M.

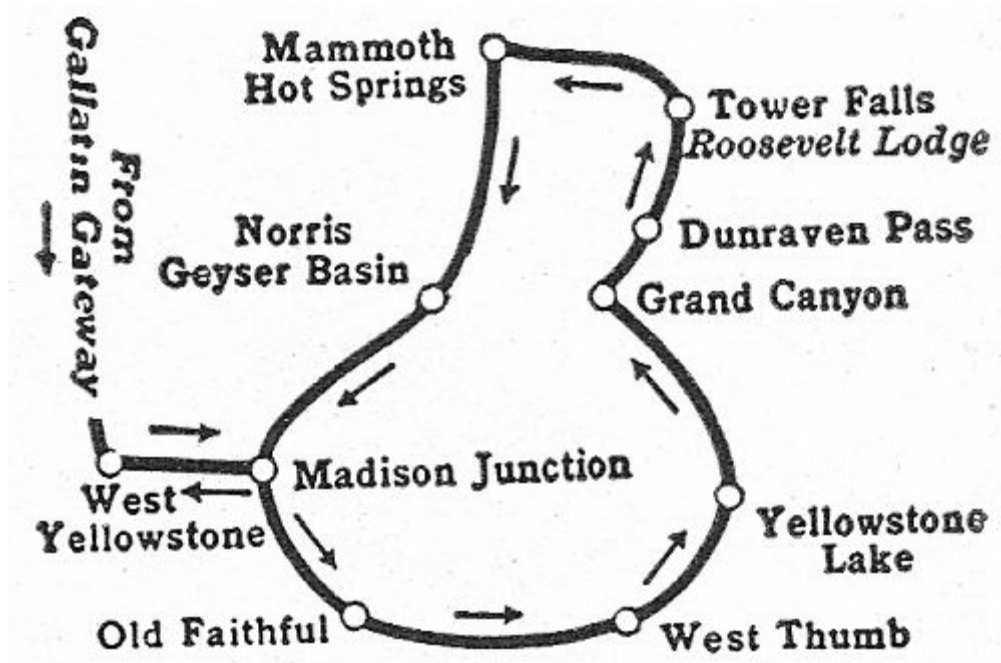
Ar. West Yellowstone

2:40 P.M.

Lv. West Yellowstone

3:00 P.M.

## In Gallatin Gateway out West Yellowstone



### 1st Day

Lv. Gallatin Gateway	1:00 P.M. B
Ar. Old Faithful	6:11 P.M. CD

### 2nd Day

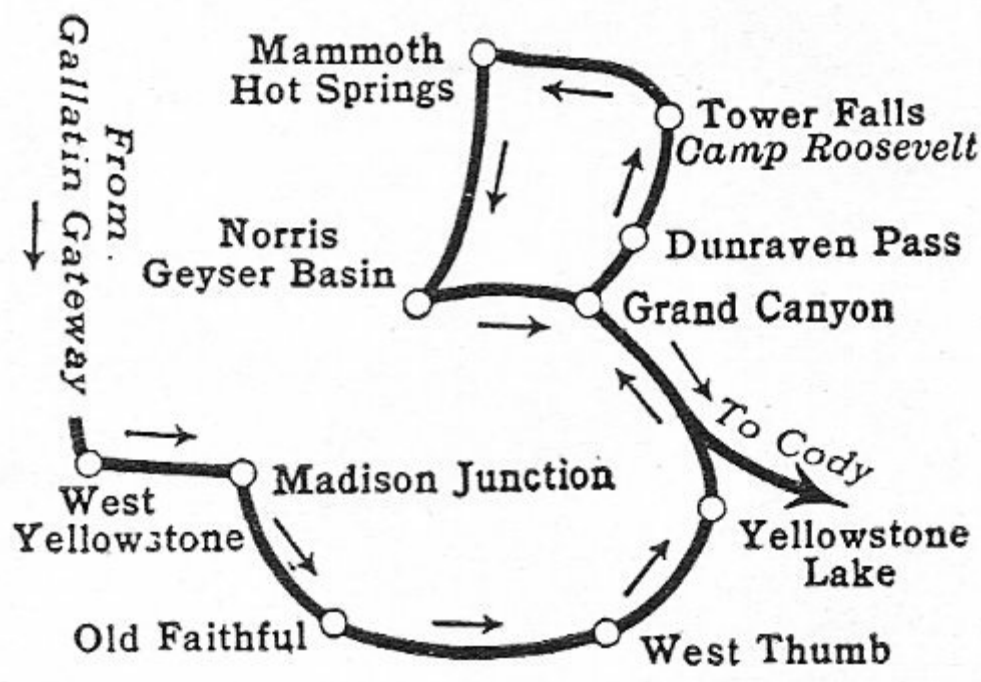
Lv. Old Faithful	1:30 P.M. AB
Ar. Grand Canyon (Via Artist Point)	4:55 P.M. CD

### 3rd Day

Lv. Grand Canyon	9:45 A.M. A
Ar. Mammoth Hot Springs	12:31 P.M. B
Lv. Mammoth Hot Springs	2:30 P.M.
Ar. West Yellowstone	5:08 P.M. C



## In Gallatin Gateway out Cody



### 1st Day

Lv. Gallatin Gateway	1:00 P.M. B
Ar. Old Faithful	6:11 P.M. CD

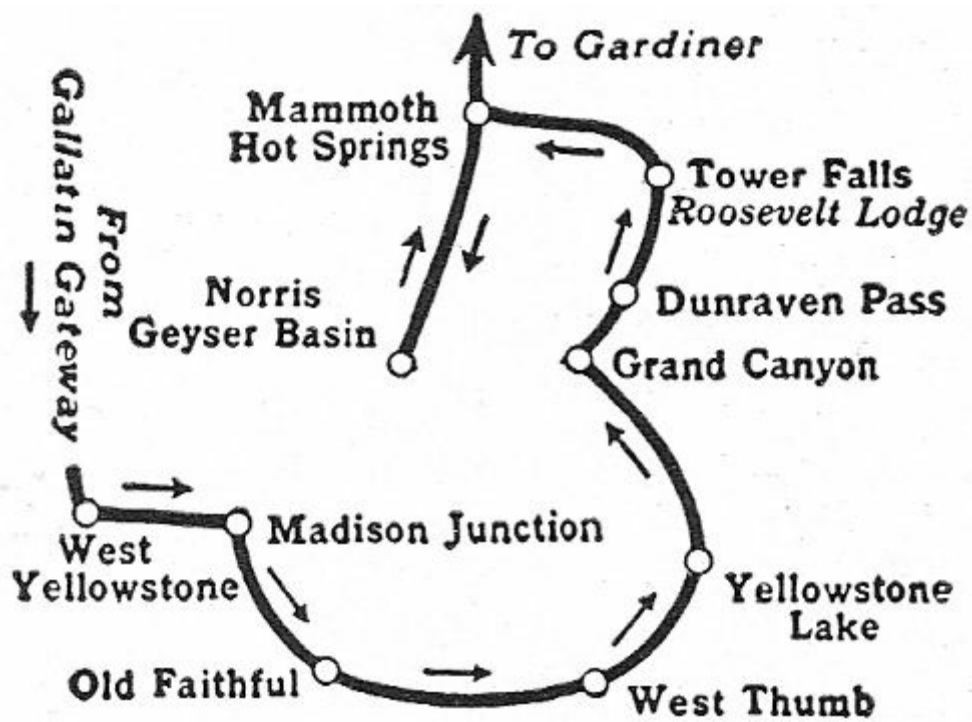
### 2nd Day

Lv. Old Faithful	8:30 A.M. A
Ar. Grand Canyon (Via Artist Point)	11:55 A.M. B
Lv. Grand Canyon	2:30 P.M.
Ar. Mammoth Hot Springs	5:16 P.M. CD

### 3rd Day

Lv. Mammoth Hot Springs	8:15 A.M. A
Ar. Grand Canyon	10:21 A.M. B
Lv. Grand Canyon	1:30 P.M.
Ar. Cody Inn	5:51 P.M. C

## In Gallatin Gateway out Gardiner



### 1st Day

Lv. Gallatin Gateway	1:00 P.M. B
Ar. Old Faithful	6:11 P.M. CD

### 2nd Day

Lv. Old Faithful	1:30 P.M. AB
Ar. Grand Canyon (Via Artist Point)	4:55 P.M. CD

### 3rd Day

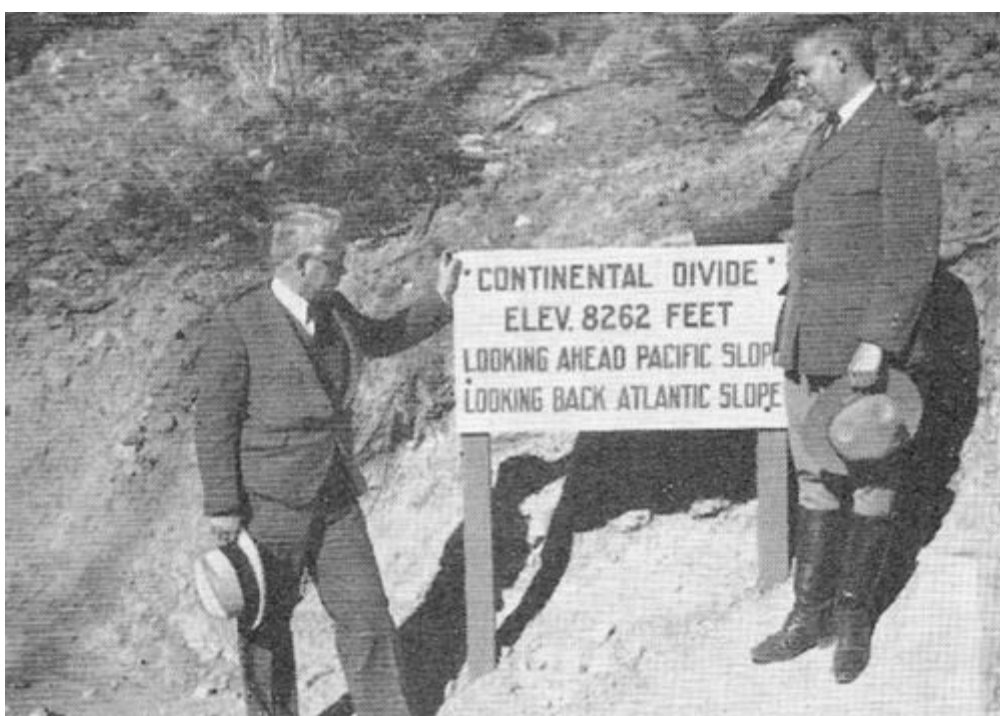
Lv. Grand Canyon	2:30 P.M. AB
Ar. Mammoth Hot Springs	5:16 P.M. C
Lv. Mammoth Hot Springs	7:00 P.M.
Ar. Gardiner	7:20 P.M.



*Rock pinnacles cluster around Tower Falls.*



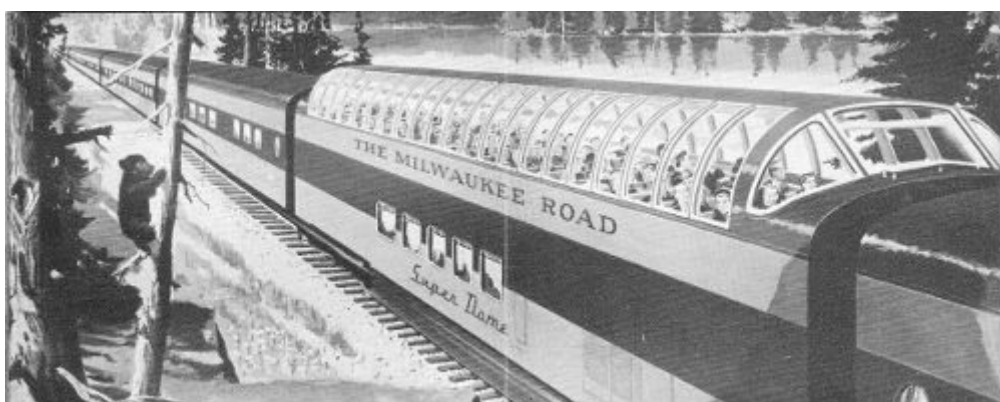
*Take a speedboat ride on Yellowstone Lake.*



*East and West flow the rivers of the continent.*



*The Wedding Cake rises from a hot spring.*



Super dome railroad car.



## **SUPER DOMES**

### **NOW ON THE *OLYMPIAN Hiawatha***

Here's extra fun on your trip to Yellowstone via The Milwaukee Road. The super-speed Olympian HIAWATHA—only one night en route from Chicago—carries America's first full length domes, the only domes to the Pacific Northwest.

68 individual lookout seats on the upper deck provide glorious views of the palisades of the Mississippi, the Belt Mountains, Montana Canyon and the source of the Missouri near Three Forks. Delightful Cafe Lounge on the lower deck of the Super Dome car for beverages and snacks. Entire car is open to all passengers.

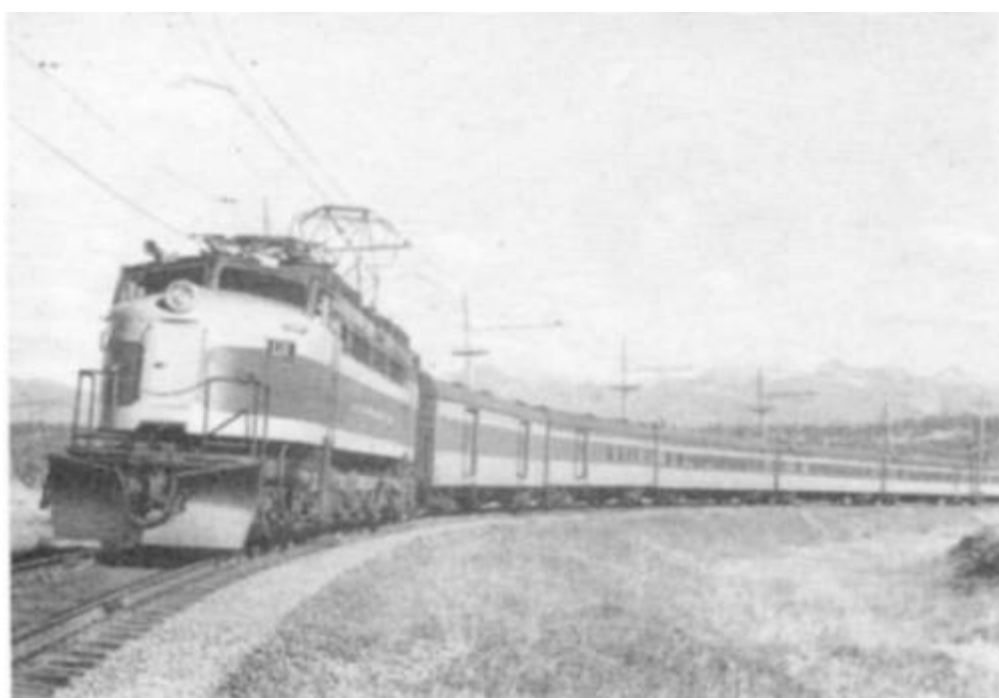
Olympian HIAWATHA equipment includes private-room cars with the unique Skytop Lounge. Double bedrooms and roomettes are completely and luxuriously appointed. Adjoining bedrooms open to form connecting suites.

Touralux sleepers, built exclusively for this service, offer berth comfort and privacy at reduced cost. Reserved seat Luxurest coaches have 40 individual chairs with leg rests; spacious lounge-dressing rooms for men and for women. Dining car features famous Milwaukee Road meals. All cars are air conditioned and wired for radio or station announcements.

## **The electrified COLUMBIAN**

Accommodations in air conditioned standard Pullman sleepers, tourist sleepers and Hiawatha-type coaches. Electric operation through the Belt Mountains and Montana Canyon.

Westbound passengers for Yellowstone on the COLUMBIAN reach Three Forks in the morning, have lunch at Gallatin Gateway Inn and leave for the Park immediately afterward. On the Olympian HIAWATHA, you reach Three Forks in mid-afternoon and remain at the Inn until after lunch the following day. By eliminating the stay at the Inn, you save money traveling on the COLUMBIAN. There is also some saving of time from Chicago despite the more leisurely schedule of this train.



# **GENERAL INFORMATION**

## **Prepaid, All-Expense Tours Personally Escorted**

Many Yellowstone Park travelers prefer to travel with special parties of congenial people under the popular all-expense plan. These tours will be operated during the Yellowstone Park season and those desiring to join one of the parties should call on any of the Chicago, Milwaukee, St. Paul and Pacific Railroad travel bureaus shown on the inside back cover of this booklet or write direct to Mr. H. Sengstacken, Passenger Traffic Manager, The Milwaukee Road, Union Station, Chicago 6, Ill.

## **The Park Season**

The regular Park season is June 22nd to September 8th.

## **Motor Transportation**

The Yellowstone Park Company, under contract with the Government operates a transportation line between the Park entrances and the various hotels and points of interest.

## **Hotels**

All service is under the supervision of the Government and is maintained at a high standard at rates fixed by the Government.

Each hotel is individual in character and architecture, completely and modernly equipped.

Old Faithful Inn is a striking structure of logs and stone. Its unusual lobby is 75 feet square and 92 feet high to the peak of the roof, with balconies around three sides.

Old Faithful Geyser is nearby the Inn, and not far away are many other geysers too numerous to mention here.

The Canyon Hotel, one of the finest hotels in the country with every comfort and convenience, is particularly well known for its spacious and beautiful plate-glass enclosed lounge. It has a wonderful setting high up on one side of Yellowstone Canyon, not far from the Lower Falls.

Mammoth Hot Springs hotel is most modern in style and appointments.

## **The Climate**

Far from the least attraction of an invigorating outing is the climate. An average elevation of 8,000 feet brings a clear and bracing atmosphere. Hot mineral baths and outdoor sleeping, best of Nature's medicines, may be enjoyed throughout the season. During the tourist season the mean average temperature ranges from 54° to 64° with a maximum of 88°. There is little choice as to the best time for visiting the Park. Early summer finds more snow in the mountains; August and September bring floral decorations in all their beauty and charm.

## **What to Wear**

Warm clothing should be worn, and one should be prepared for sudden changes of temperature common at an altitude of 7,500 feet. Men should have medium weight overcoats and sweaters, and women should have coats or sweaters. Slacks or riding breeches are recommended for both men and women. Stout shoes should be worn as they are most comfortable and best suited for walking about the geysers, terraces and other formations. Tinted glasses, serviceable gloves and field glasses will be found useful.

## **Park Administration**

Yellowstone, like all other National Parks, is under the supervision of the National Park Service, with a local superintendent located at Mammoth Hot Springs, headquarters of the Park administration.

## **Church Services**

Religious services are conducted at convenient locations in the park. Information provided at hotel desks.

## **Medical Service in Yellowstone**

Physicians and surgeons with headquarters at Mammoth Hot Springs are available for call to any place in the Park. Trained nurses and a dispensary are at each of the hotels in the Park. At Mammoth is a well-equipped hospital with skilled personnel.

## **Saddle Horse Trips and Guides**

Saddle horses, as well as competent guides, are available at all hotels and lodges at established rates made by the National Park Service. Those who desire to do so may get far off the beaten path

and into the more remote and scenic regions of the Park.

## **Cost of Park Tour from Gallatin Gateway**

(which will be added to the excursion fare to Gallatin Gateway)

Including Motor Transportation and Meals and Lodging

For Adults and children 12 years old and over \$46.75

For children 8 years old and under 12 years 34.25

For children under 8 years 24.00

(Federal tax extra)

Longer time than is provided by the regular “two-and-one-half days” tour may be spent at the stopover points, if desired. For such additional time, meals and lodging are on the basis of \$9.00 to \$12.00 per day, American plan. (Children’s Tickets for motor transportation and hotel accommodations are sold at Park entrances only.)

## **Baggage**

The Yellowstone Park Company will carry free, two pieces of hand baggage for each person, not to exceed sixty pounds in total weight, with a limited liability of \$25.00 for each piece for loss or damage. Passengers desiring additional protection may obtain an insurance policy at small cost from the transportation agent at Gallatin Gateway. Trunks cannot be transported in the automobiles. Tourists contemplating a prolonged trip through the Park can make arrangements with representatives of the Transportation Company at Gallatin Gateway for the forwarding of trunks.

Railroads store baggage free at Gallatin Gateway, Three Forks, Butte, Livingston, Gardiner, Cody, Frannie or Billings, West Yellowstone, Pocatello, Idaho Falls, Ogden or Salt Lake City, for actual length of time spent in the Park. Baggage may be checked to Gallatin Gateway, Gardiner, Cody or West Yellowstone.

*Passengers entering the Park via one station and leaving via another can make arrangements for free checking of baggage to station via which they leave the Park.*



## **Return via Salt Lake City and Colorado**

Many rail travelers from the East and Middle West add to the enjoyment of their Yellowstone tour by returning over a different route. You can plan your trip to continue southward from West Yellowstone to Salt Lake City, then east through Colorado and so home again.

Salt Lake City, originally settled and built by the Mormons, is a clean and attractive city that rates high in tourist interest. The focal point, of course, is the great square containing the handsome Mormon Temple and the smaller Tabernacle with its barrel-vaulted, wooden roof. Organ recitals are held regularly in this building.

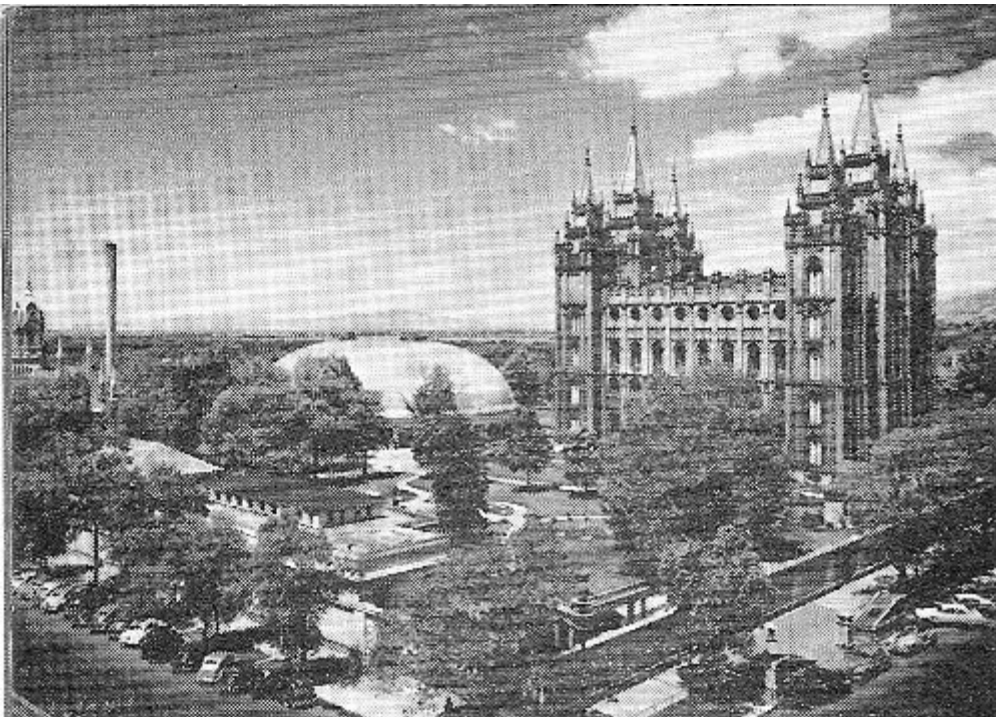
Many brief tours are available to points of outstanding interest. You will want to visit Saltair on the shores of Great Salt Lake and probably to take a swim in the amazingly buoyant waters. You also see the vast and arid salt fields on this trip. Another tour might well be through Bingham Canyon into the mining country where you see the world's largest open pit copper mine.

From Salt Lake City, one of the routes east takes you through the world-renowned Royal Gorge of the Arkansas River, one of the great scenic thrills of the West. Another scenic route east takes you through Cheyenne.

From Colorado Springs, the "Sunshine City", motor tours take you through the beautiful residential section and over High Mesa to the colorful Garden of the Gods. Then on to Manitou, Seven Falls, Cheyenne Mountain, the Will Rogers Shrine Memorial, through Ute Pass and up Pyramid Mountain for a superb view of Pikes Peak and its sisters in the Rockies.

Denver, the mile-high city, has a superb system of parks, the Buffalo Bill Memorial Museum and the tomb of Buffalo Bill. Scenic drives offer extraordinary views into Clear Creek Canyon, Bear Creek Canyon and the gorgeous Red Rocks.

Fast streamliners provide excellent rail service between Denver, Colorado Springs and Chicago.



*Mormon Tabernacle Square in Salt Lake City*

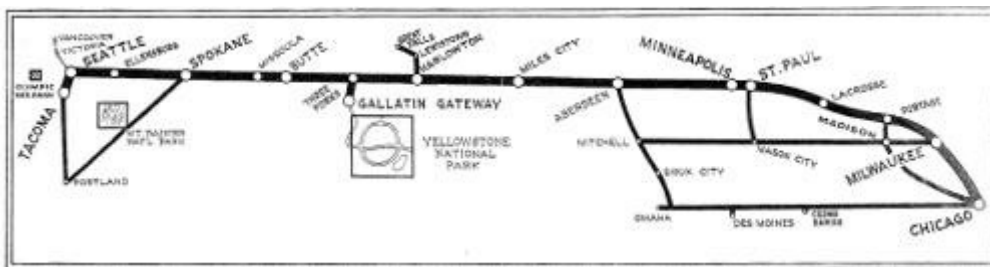


*Floating is easy in Great Salt Lake*





*Pike's Peak from Garden of the Gods*



# TRAVEL AND INFORMATION BUREAUS

ABERDEEN, S. D., "*Milwaukee*" Station, 1 North Main St. Phone 2219  
A. F. Reuland Division Passenger Agent

ATLANTA 3, GA., 521-522 Healey Bldg. Phone Walnut 6585  
Paul A. Larson General Agent

BELOIT, WIS., "*Milwaukee*" Station Phone College 257  
M. M. Marske Passenger and Ticket Agent

BOSTON 8, MASS., 294 Washington St. Phone Liberty 2-9812  
W. D. Goss General Agent

BUFFALO 3, N. Y., 295 Main St. Phone Washington 0634  
W. A. Stauffer General Agent

BUTTE, MONT., "*Milwaukee*" Station Phone 3251  
V. E. Straus Assistant General Passenger Agent

CEDAR RAPIDS, IOWA, "*Milwaukee*" Station, 401 First Ave. S. E. Phone 6027  
B. P. Dvorak Passenger and Ticket Agent

CHICAGO 3, ILL., 711-100 West Monroe Bldg. Phone Central 6-7600  
V. L. Hitzfeld General Agent Passenger Department

R. V. Gertz, 179 W. Jackson Blvd., Zone 4 City Ticket Agent

CINCINNATI 2, OHIO, 324 Dixie Terminal Phones Garfield 5247-5248  
R. T. Dempsey General Agent

CLEVELAND 14, OHIO, 925 Euclid Ave. Phone Main 1-2457  
R. G. Davisson General Agent

CLINTON, IOWA, 60 Fourth Ave. Phone 712  
M. O. Schorr Passenger Agent

COUNCIL BLUFFS, IOWA, 1300 South 6th St. Phone 2767  
J. I. McGuire Agent

DAVENPORT, IOWA, Union Station, Foot Harrison St. Phone 2-5304  
A. T. Paulsen Passenger and Ticket Agent

DES MOINES 9, IOWA, Union Station, 5th & Cherry Sts. Phone 3-6277  
H. H. Jacobs Division Passenger Agent

DETROIT 26, MICH., 144 W. Lafayette Blvd. Phones Woodward 2-3716-17  
W. G. Lacey General Agent

DUBUQUE, IOWA, "*Milwaukee*" Sta., 3rd St. and Central Ave. Phone 2-1559  
R. J. Kemp Passenger and Ticket Agent

DULUTH 2, MINN., 420 West Superior St. Phones 2-0524, Sup. 2-2502  
P. P. Gehrig General Agent

EVANSTON, ILL., 909 Church St. Phone University 4-1000

H. F. Bitz Agent

EXCELSIOR SPRINGS, MO., "*Milwaukee*" Station Phone 177

H. F. Owen Passenger and Ticket Agent

FREEPORT, ILL., "*Milwaukee*" Station, 410 E. Stephenson St. Phone Main 1302

R. L. Fuller Ticket Agent

GREEN BAY, WIS., "*Milwaukee*" Station, End S. Wash. St. Phone Adams 866

E. D. Crim Passenger and Ticket Agent

INDIANAPOLIS 4, IND., 420 Board of Trade Bldg. Phone Franklin 7582

S. P. Elmalie General Agent

JANESVILLE, WIS., "*Milwaukee*" Station, 225 N. High St. Phone 6946

J. M. Brown Passenger and Ticket Agent

KANSAS CITY 6, MO., 646 Board of Trade Bldg. Phone Victor 6390

C. J. Peck, Jr. District Passenger Agent

LA CROSSE, WIS., "*Milwaukee*" Sta., St. Andrew & Caledonia Sts. Phone 2-7151

A. O. Sundet Ticket Agent

LOS ANGELES 14, CALIF., 210 W. Seventh St. Phone Trinity 9555

R. B. Amis General Agent

MADISON 3, WIS., "*Milwaukee*" Station Phone 5-4561

R. K. Hurlbut District Passenger Agent

MASON CITY, IOWA, "*Milwaukee*" Station Phone 82

H. W. Frazee Passenger and Ticket Agent

MILES CITY, MONT., "*Milwaukee*" Station, No. 10th St. Phone 362

W. C. Boyle Passenger and Ticket Agent

MILWAUKEE 2, WIS., 210 E. Wisconsin Ave. Phone Daly 8-1864

C. F. Dahnke Assistant General Passenger Agent

J. P. Paulus, Station Ticket Agent, 4th Ward Pk. Phone Broadway 1-6120

MINNEAPOLIS 1, MINN., "*Milwaukee*" Station Phone Fillmore 1616

H. M. Larson Assistant General Passenger Agent

D. G. McMillan, 700 Marquette Ave. G.A.P.D. Phone Fillmore 1616

S. F. Luce, Station Ticket Agent, 3rd Ave. So. Phone Fillmore 1616

MISSOULA, MONT., "*Milwaukee*" Station Phones 3186 & 6639

G. B. Baker Passenger and Ticket Agent

NEW ORLEANS 12, LA., 210 Baronne St. Phone Tulane 5678

C. T. Carter General Agent

NEW YORK 17, N. Y., 122 East 42nd St. Phone Oxford 7-2220

C. C. Burns General Agent Passenger Department

OMAHA 2, NEBR., 1611 Farnam Street Phone Jackson 4481

G. A. Henkens General Agent Passenger Department

OTTUMWA, IOWA, "*Milwaukee*" Station, Jefferson St. Phone 776

I. R. Carlson Passenger and Ticket Agent



PHILADELPHIA 9, PA., 123 S. Broad Street, Phones Pennypacker 5-0407 and 08  
T. A. Morgan General Agent

PITTSBURGH 22, PA., 518-519 Oliver Bldg. Phones Atlantic 1-2438-39  
F. W. Baker General Agent

PORTLAND 4, ORE., 528 S. W. Yamhill St. Phone Atwater 0204  
E. E. White General Agent

RACINE, WIS., Union Station, 607 Park Ave. Phone Jackson 4-7333  
W. E. Ernst City Passenger and Ticket Agent

RAPID CITY, S. D., "*Milwaukee*" Station, 307 Seventh St. Phone 454  
L. H. Shuck Passenger and Ticket Agent

ROCKFORD, ILL., 625 South Main Street Phone Main 4-3381  
L. E. Martin General Agent

ROCK ISLAND, ILL., "*Milwaukee*" Station, 1st Ave. & 17th St. Phone 779  
W. E. Biggs Passenger and Ticket Agent

ST. LOUIS 1, MO., 611 Olive Street Phone Chestnut 0337  
H. E. Ridenour General Agent

ST. PAUL 1, MINN., Minnesota Bldg. Phone Cedar 4491  
P. J. Nikolai General Agent Passenger Department

SALT LAKE CITY 1, UTAH, 310-311 Dooly Building Phone 3-4184  
J. G. MacDonald General Agent

SAN FRANCISCO 5, CALIF., 681 Market Street Phone DOuglas 2-4912  
A. Tansley District Passenger Agent

SEATTLE 1, WASH., 306 Union St. Phone Eliot 6800  
R. E. Schaffert General Agent Passenger Department

SIOUX CITY 1, IOWA, "*Milwaukee*" Station, 2nd & Pierce Sts. Phone 8-0511  
T. L. Ericson Station Ticket Agent

SIOUX FALLS, S. D., "*Milwaukee*" Station, 6th St. & Phillips Ave. Phone 4-5547  
J. D. Wohlenberg General Agent

SPOKANE 1, WASH., North One Post Street Phone Main 2261  
J. G. Cain District Passenger Agent

TACOMA 2, WASH., 112 South Ninth Street Phone Main 2101  
M. P. Burns District Passenger Agent

O. R. Powels, "*Milwaukee*" Sta., S. 25th & A Sts. Station Ticket Agent

TERRE HAUTE, IND., 300 Rea Bldg. Phone Crawford 2852  
C. P. Cassidy Division Passenger Agent

TORONTO 1, ONT., 68 Yonge Street Phone EMpire 8-6538  
R. S. Moore General Agent

TULSA 3, OKLA., 321 S. Boston Street Phone 2-9921  
H. A. Washburn Commercial Agent

VANCOUVER 2, B. C., 793 Granville Street Phone MArine 8177  
E. C. Chapman General Agent

VICTORIA, B. C., 612 View St. Phone Beacon 7254

C. E. Blaney, Jr. Agent

WASHINGTON 5, D. C., 310 Sheraton Bldg. Phones REpublic 7-1038-39

J. B. Cunningham District Passenger Agent

WAUSAU, WIS., “*Milwaukee*” Station, 739 Grant St. Phone 5166

A. W. Schulz Passenger and Ticket Agent

WINNEPEG, MAN., 211 Portage Avenue Phone 925-753

J. H. Bradley General Agent

WINONA, MINN., “*Milwaukee*” Station, Mark and Center Sts. Phone 4062

L. M. Petrie Passenger and Ticket Agent

WINSTON-SALEM 3, N. C., 403 N. Main Street Phone 6502

R. E. Anderson Traveling Passenger Agent

WM. WALLACE, Assistant Passenger Traffic Manager, Chicago 6, Ill.

O. R. ANDERSON, General Passenger Agent, Seattle 1, Wash.

H. SENGSTACKEN, Passenger Traffic Manager, Chicago 6, Ill.

## THE MILWAUKEE ROAD

PRINTED IN U.S.A.

*Photographs illustrate the latest Olympian HIAWATHA equipment including new Super Dome car and the Skytop Lounge. Super Dome with Cafe Lounge on lower deck is open to all—no extra charge. Whether you travel in private-room cars, in thrifty Touralux sleepers or leg rest coaches, you'll enjoy Milwaukee Road hospitality.*

THE MILWAUKEE ROAD



*Photographs illustrate the latest Olympian HIAWATHA equipment including new Super Dome car and the Skytop Lounge. Super Dome with Cafe Lounge on lower deck is open to all—no extra charge. Whether you travel in private-room cars, in thrifty Touralux sleepers or leg rest coaches, you'll enjoy Milwaukee Road hospitality.*



**THE MILWAUKEE ROAD**

# Transcriber's Notes

- Included publication information from the printed pamphlet: the original is public domain in the country of publication.
- Silently corrected a few palpable typos.

End of the Project Gutenberg EBook of Yellowstone via Gallatin Gateway  
Montana, by Milwaukee Road Corporation

\*\*\* END OF THIS PROJECT GUTENBERG EBOOK YELLOWSTONE VIA GALLATIN GATEWAY \*\*\*

\*\*\*\*\* This file should be named 46305-h.htm or 46305-h.zip \*\*\*\*\*  
This and all associated files of various formats will be found in:  
<http://www.gutenberg.org/4/6/3/0/46305/>

Produced by Stephen Hutcheson, the Mo-Ark Regional Railroad  
Museum at Poplar Bluff, and the Online Distributed  
Proofreading Team at <http://www.pgdp.net>

Updated editions will replace the previous one--the old editions  
will be renamed.

Creating the works from public domain print editions means that no  
one owns a United States copyright in these works, so the Foundation  
(and you!) can copy and distribute it in the United States without  
permission and without paying copyright royalties. Special rules,  
set forth in the General Terms of Use part of this license, apply to  
copying and distributing Project Gutenberg-tm electronic works to  
protect the PROJECT GUTENBERG-tm concept and trademark. Project  
Gutenberg is a registered trademark, and may not be used if you  
charge for the eBooks, unless you receive specific permission. If you  
do not charge anything for copies of this eBook, complying with the  
rules is very easy. You may use this eBook for nearly any purpose  
such as creation of derivative works, reports, performances and  
research. They may be modified and printed and given away--you may do  
practically ANYTHING with public domain eBooks. Redistribution is  
subject to the trademark license, especially commercial  
redistribution.

\*\*\* START: FULL LICENSE \*\*\*

THE FULL PROJECT GUTENBERG LICENSE

To protect the Project Gutenberg-tm mission of promoting the free distribution of electronic works, by using or distributing this work (or any other work associated in any way with the phrase "Project Gutenberg"), you agree to comply with all the terms of the Full Project Gutenberg-tm License available with this file or online at [www.gutenberg.org/license](http://www.gutenberg.org/license).

## Section 1. General Terms of Use and Redistributing Project Gutenberg-tm electronic works

1.A. By reading or using any part of this Project Gutenberg-tm electronic work, you indicate that you have read, understand, agree to and accept all the terms of this license and intellectual property (trademark/copyright) agreement. If you do not agree to abide by all the terms of this agreement, you must cease using and return or destroy all copies of Project Gutenberg-tm electronic works in your possession. If you paid a fee for obtaining a copy of or access to a Project Gutenberg-tm electronic work and you do not agree to be bound by the terms of this agreement, you may obtain a refund from the person or entity to whom you paid the fee as set forth in paragraph 1.E.8.

1.B. "Project Gutenberg" is a registered trademark. It may only be used on or associated in any way with an electronic work by people who agree to be bound by the terms of this agreement. There are a few things that you can do with most Project Gutenberg-tm electronic works even without complying with the full terms of this agreement. See paragraph 1.C below. There are a lot of things you can do with Project Gutenberg-tm electronic works if you follow the terms of this agreement and help preserve free future access to Project Gutenberg-tm electronic works. See paragraph 1.E below.

1.C. The Project Gutenberg Literary Archive Foundation ("the Foundation" or PGLAF), owns a compilation copyright in the collection of Project Gutenberg-tm electronic works. Nearly all the individual works in the collection are in the public domain in the United States. If an individual work is in the public domain in the United States and you are located in the United States, we do not claim a right to prevent you from copying, distributing, performing, displaying or creating derivative works based on the work as long as all references to Project Gutenberg are removed. Of course, we hope that you will support the Project Gutenberg-tm mission of promoting free access to electronic works by freely sharing Project Gutenberg-tm works in compliance with the terms of this agreement for keeping the Project Gutenberg-tm name associated with the work. You can easily comply with the terms of this agreement by keeping this work in the same format with its attached full Project Gutenberg-tm License when you share it without charge with others.

1.D. The copyright laws of the place where you are located also govern what you can do with this work. Copyright laws in most countries are in a constant state of change. If you are outside the United States, check the laws of your country in addition to the terms of this agreement before downloading, copying, displaying, performing, distributing or creating derivative works based on this work or any other Project Gutenberg-tm work. The Foundation makes no representations concerning the copyright status of any work in any country outside the United



States.

1.E. Unless you have removed all references to Project Gutenberg:

1.E.1. The following sentence, with active links to, or other immediate access to, the full Project Gutenberg-tm License must appear prominently whenever any copy of a Project Gutenberg-tm work (any work on which the phrase "Project Gutenberg" appears, or with which the phrase "Project Gutenberg" is associated) is accessed, displayed, performed, viewed, copied or distributed:

This eBook is for the use of anyone anywhere at no cost and with almost no restrictions whatsoever. You may copy it, give it away or re-use it under the terms of the Project Gutenberg License included with this eBook or online at [www.gutenberg.org](http://www.gutenberg.org)

1.E.2. If an individual Project Gutenberg-tm electronic work is derived from the public domain (does not contain a notice indicating that it is posted with permission of the copyright holder), the work can be copied and distributed to anyone in the United States without paying any fees or charges. If you are redistributing or providing access to a work with the phrase "Project Gutenberg" associated with or appearing on the work, you must comply either with the requirements of paragraphs 1.E.1 through 1.E.7 or obtain permission for the use of the work and the Project Gutenberg-tm trademark as set forth in paragraphs 1.E.8 or 1.E.9.

1.E.3. If an individual Project Gutenberg-tm electronic work is posted with the permission of the copyright holder, your use and distribution must comply with both paragraphs 1.E.1 through 1.E.7 and any additional terms imposed by the copyright holder. Additional terms will be linked to the Project Gutenberg-tm License for all works posted with the permission of the copyright holder found at the beginning of this work.

1.E.4. Do not unlink or detach or remove the full Project Gutenberg-tm License terms from this work, or any files containing a part of this work or any other work associated with Project Gutenberg-tm.

1.E.5. Do not copy, display, perform, distribute or redistribute this electronic work, or any part of this electronic work, without prominently displaying the sentence set forth in paragraph 1.E.1 with active links or immediate access to the full terms of the Project Gutenberg-tm License.

1.E.6. You may convert to and distribute this work in any binary, compressed, marked up, nonproprietary or proprietary form, including any word processing or hypertext form. However, if you provide access to or distribute copies of a Project Gutenberg-tm work in a format other than "Plain Vanilla ASCII" or other format used in the official version posted on the official Project Gutenberg-tm web site ([www.gutenberg.org](http://www.gutenberg.org)), you must, at no additional cost, fee or expense to the user, provide a copy, a means of exporting a copy, or a means of obtaining a copy upon request, of the work in its original "Plain Vanilla ASCII" or other form. Any alternate format must include the full Project Gutenberg-tm License as specified in paragraph 1.E.1.

1.E.7. Do not charge a fee for access to, viewing, displaying, performing, copying or distributing any Project Gutenberg-tm works

unless you comply with paragraph 1.E.8 or 1.E.9.

1.E.8. You may charge a reasonable fee for copies of or providing access to or distributing Project Gutenberg-tm electronic works provided that

- You pay a royalty fee of 20% of the gross profits you derive from the use of Project Gutenberg-tm works calculated using the method you already use to calculate your applicable taxes. The fee is owed to the owner of the Project Gutenberg-tm trademark, but he has agreed to donate royalties under this paragraph to the Project Gutenberg Literary Archive Foundation. Royalty payments must be paid within 60 days following each date on which you prepare (or are legally required to prepare) your periodic tax returns. Royalty payments should be clearly marked as such and sent to the Project Gutenberg Literary Archive Foundation at the address specified in Section 4, "Information about donations to the Project Gutenberg Literary Archive Foundation."
- You provide a full refund of any money paid by a user who notifies you in writing (or by e-mail) within 30 days of receipt that s/he does not agree to the terms of the full Project Gutenberg-tm License. You must require such a user to return or destroy all copies of the works possessed in a physical medium and discontinue all use of and all access to other copies of Project Gutenberg-tm works.
- You provide, in accordance with paragraph 1.F.3, a full refund of any money paid for a work or a replacement copy, if a defect in the electronic work is discovered and reported to you within 90 days of receipt of the work.
- You comply with all other terms of this agreement for free distribution of Project Gutenberg-tm works.

1.E.9. If you wish to charge a fee or distribute a Project Gutenberg-tm electronic work or group of works on different terms than are set forth in this agreement, you must obtain permission in writing from both the Project Gutenberg Literary Archive Foundation and Michael Hart, the owner of the Project Gutenberg-tm trademark. Contact the Foundation as set forth in Section 3 below.

1.F.

1.F.1. Project Gutenberg volunteers and employees expend considerable effort to identify, do copyright research on, transcribe and proofread public domain works in creating the Project Gutenberg-tm collection. Despite these efforts, Project Gutenberg-tm electronic works, and the medium on which they may be stored, may contain "Defects," such as, but not limited to, incomplete, inaccurate or corrupt data, transcription errors, a copyright or other intellectual property infringement, a defective or damaged disk or other medium, a computer virus, or computer codes that damage or cannot be read by your equipment.

1.F.2. LIMITED WARRANTY, DISCLAIMER OF DAMAGES - Except for the "Right of Replacement or Refund" described in paragraph 1.F.3, the Project Gutenberg Literary Archive Foundation, the owner of the Project

Gutenberg-tm trademark, and any other party distributing a Project Gutenberg-tm electronic work under this agreement, disclaim all liability to you for damages, costs and expenses, including legal fees. YOU AGREE THAT YOU HAVE NO REMEDIES FOR NEGLIGENCE, STRICT LIABILITY, BREACH OF WARRANTY OR BREACH OF CONTRACT EXCEPT THOSE PROVIDED IN PARAGRAPH 1.F.3. YOU AGREE THAT THE FOUNDATION, THE TRADEMARK OWNER, AND ANY DISTRIBUTOR UNDER THIS AGREEMENT WILL NOT BE LIABLE TO YOU FOR ACTUAL, DIRECT, INDIRECT, CONSEQUENTIAL, PUNITIVE OR INCIDENTAL DAMAGES EVEN IF YOU GIVE NOTICE OF THE POSSIBILITY OF SUCH DAMAGE.

1.F.3. LIMITED RIGHT OF REPLACEMENT OR REFUND - If you discover a defect in this electronic work within 90 days of receiving it, you can receive a refund of the money (if any) you paid for it by sending a written explanation to the person you received the work from. If you received the work on a physical medium, you must return the medium with your written explanation. The person or entity that provided you with the defective work may elect to provide a replacement copy in lieu of a refund. If you received the work electronically, the person or entity providing it to you may choose to give you a second opportunity to receive the work electronically in lieu of a refund. If the second copy is also defective, you may demand a refund in writing without further opportunities to fix the problem.

1.F.4. Except for the limited right of replacement or refund set forth in paragraph 1.F.3, this work is provided to you 'AS-IS', WITH NO OTHER WARRANTIES OF ANY KIND, EXPRESS OR IMPLIED, INCLUDING BUT NOT LIMITED TO WARRANTIES OF MERCHANTABILITY OR FITNESS FOR ANY PURPOSE.

1.F.5. Some states do not allow disclaimers of certain implied warranties or the exclusion or limitation of certain types of damages. If any disclaimer or limitation set forth in this agreement violates the law of the state applicable to this agreement, the agreement shall be interpreted to make the maximum disclaimer or limitation permitted by the applicable state law. The invalidity or unenforceability of any provision of this agreement shall not void the remaining provisions.

1.F.6. INDEMNITY - You agree to indemnify and hold the Foundation, the trademark owner, any agent or employee of the Foundation, anyone providing copies of Project Gutenberg-tm electronic works in accordance with this agreement, and any volunteers associated with the production, promotion and distribution of Project Gutenberg-tm electronic works, harmless from all liability, costs and expenses, including legal fees, that arise directly or indirectly from any of the following which you do or cause to occur: (a) distribution of this or any Project Gutenberg-tm work, (b) alteration, modification, or additions or deletions to any Project Gutenberg-tm work, and (c) any Defect you cause.

## Section 2. Information about the Mission of Project Gutenberg-tm

Project Gutenberg-tm is synonymous with the free distribution of electronic works in formats readable by the widest variety of computers including obsolete, old, middle-aged and new computers. It exists because of the efforts of hundreds of volunteers and donations from people in all walks of life.

Volunteers and financial support to provide volunteers with the

assistance they need are critical to reaching Project Gutenberg-tm's goals and ensuring that the Project Gutenberg-tm collection will remain freely available for generations to come. In 2001, the Project Gutenberg Literary Archive Foundation was created to provide a secure and permanent future for Project Gutenberg-tm and future generations. To learn more about the Project Gutenberg Literary Archive Foundation and how your efforts and donations can help, see Sections 3 and 4 and the Foundation information page at [www.gutenberg.org](http://www.gutenberg.org)

### Section 3. Information about the Project Gutenberg Literary Archive Foundation

The Project Gutenberg Literary Archive Foundation is a non profit 501(c)(3) educational corporation organized under the laws of the state of Mississippi and granted tax exempt status by the Internal Revenue Service. The Foundation's EIN or federal tax identification number is 64-6221541. Contributions to the Project Gutenberg Literary Archive Foundation are tax deductible to the full extent permitted by U.S. federal laws and your state's laws.

The Foundation's principal office is located at 4557 Melan Dr. S. Fairbanks, AK, 99712., but its volunteers and employees are scattered throughout numerous locations. Its business office is located at 809 North 1500 West, Salt Lake City, UT 84116, (801) 596-1887. Email contact links and up to date contact information can be found at the Foundation's web site and official page at [www.gutenberg.org/contact](http://www.gutenberg.org/contact)

For additional contact information:

Dr. Gregory B. Newby  
Chief Executive and Director  
[gbnewby@pglaf.org](mailto:gbnewby@pglaf.org)

### Section 4. Information about Donations to the Project Gutenberg Literary Archive Foundation

Project Gutenberg-tm depends upon and cannot survive without wide spread public support and donations to carry out its mission of increasing the number of public domain and licensed works that can be freely distributed in machine readable form accessible by the widest array of equipment including outdated equipment. Many small donations (\$1 to \$5,000) are particularly important to maintaining tax exempt status with the IRS.

The Foundation is committed to complying with the laws regulating charities and charitable donations in all 50 states of the United States. Compliance requirements are not uniform and it takes a considerable effort, much paperwork and many fees to meet and keep up with these requirements. We do not solicit donations in locations where we have not received written confirmation of compliance. To SEND DONATIONS or determine the status of compliance for any particular state visit [www.gutenberg.org/donate](http://www.gutenberg.org/donate)

While we cannot and do not solicit contributions from states where we have not met the solicitation requirements, we know of no prohibition against accepting unsolicited donations from donors in such states who approach us with offers to donate.

International donations are gratefully accepted, but we cannot make any statements concerning tax treatment of donations received from outside the United States. U.S. laws alone swamp our small staff.

Please check the Project Gutenberg Web pages for current donation methods and addresses. Donations are accepted in a number of other ways including checks, online payments and credit card donations. To donate, please visit: [www.gutenberg.org/donate](http://www.gutenberg.org/donate)

Section 5. General Information About Project Gutenberg-tm electronic works.

Professor Michael S. Hart was the originator of the Project Gutenberg-tm concept of a library of electronic works that could be freely shared with anyone. For forty years, he produced and distributed Project Gutenberg-tm eBooks with only a loose network of volunteer support.

Project Gutenberg-tm eBooks are often created from several printed editions, all of which are confirmed as Public Domain in the U.S. unless a copyright notice is included. Thus, we do not necessarily keep eBooks in compliance with any particular paper edition.

Most people start at our Web site which has the main PG search facility:

[www.gutenberg.org](http://www.gutenberg.org)

This Web site includes information about Project Gutenberg-tm, including how to make donations to the Project Gutenberg Literary Archive Foundation, how to help produce our new eBooks, and how to subscribe to our email newsletter to hear about new eBooks.